



# The Forum Insider

Newsletter of the Genealogical Forum of Oregon

Volume 27, Number 4

November 2015

## ENSURING GFO'S FUTURE

A MESSAGE FROM GFO'S PRESIDENT, LAUREL SMITH

A friend gave me a copy of “An open letter to genealogy societies” that was posted last April in an online blog. I noticed that No. 1 on the list of frustrations was titled “Hoarding money.” This entry raised some good points about some ways that societies could use their “extra” money to better meet members’ needs, including book purchases, paying for record digitization, and paying for speakers. This commentary, together with a recent example of a GFO volunteer referring to GFO’s savings as a “slush fund,” reveals what I believe is a misconception and I want to explain.

Genealogy societies like GFO continue to face many diverse and emerging challenges. These include broad societal shifts such as changing demographics and an ever-increasing reliance on personal electronic devices to gain access to information. The costs of everything – rent, paper, utilities, maintenance, repair and replacement costs, etc. – continue to rise. During recessions, membership can become an unaffordable luxury for many as incomes decrease. Donations as well as other revenue streams that support our organization can also dwindle. Fortunately, GFO is blessed with a cadre of devoted volunteers that help keep the Library’s doors

open and the organization functioning. Among these volunteers is GFO’s Board of Directors.

GFO’s Board members have a legal responsibility for considering and making many kinds of decisions on behalf of GFO’s interests, including financial management.



Yes, the GFO has savings, slowly accumulated over many years of careful monthly spending and investment. And yes, I am proud of that fact, as it is better than the alternative of facing a fiscal crisis – or worse. Many members don’t know that TriMet contributed significantly to GFO’s moving costs, as a result of being displaced from the Gideon Street location due to the Orange Line light rail line construction. TriMet’s generous assistance with our unforeseen move together with careful spending has put GFO in the enviable position of having savings.

Some non-profit organizations create and maintain a “rainy day” or “emergency” fund, typically referred to as an “Operating Reserve.” Others take steps to budget, save, and solicit enough money to create one. A reserve fund is a specially designated account set aside by the organization’s board to help stabilize an organization’s finances by providing a cushion for planned or unplanned future expense or loss. Just like household savings, set-aside funds can help assure a greater degree of financial stability and are tapped only when necessary for their designated purpose.

The GFO Board is currently discussing creation of a reserve fund and adopting a policy regarding its use. How much is enough? The National Council of Nonprofits’ general guidelines call for between two and six months’ operating expenses, but they caution that settling on the



*Continued on page 2*



## The Forum Insider

Newsletter of the Genealogical Forum of Oregon

[www.gfo.org](http://www.gfo.org)

2505 SE 11th Ave., Suite B18  
Portland, OR 97202-1061  
(Corner of 11th & Division)  
503-963-1932

[info@gfo.org](mailto:info@gfo.org)

### Free Monthly Program

Third Saturday of each month at  
2 p.m. with an interesting speaker.

### Library Hours

Monday, Tuesday, and Thursday  
9:30 a.m. to 5 p.m.  
Wednesday  
9:30 to 8 p.m.  
Friday and Saturday  
9:30 a.m. to 3 p.m.  
Sunday  
12 noon to 5 p.m.

### Contents

Ensuring GFO's Future . . . . .	1
Library Winter Hours and Closures	2
Webmaster Retires . . . . .	3
GFO Stars . . . . .	3
Library Book Amnesty Month . . . .	4
Volunteer Opportunities . . . . .	5
GFO Presentation to Groups . . . . .	5
See Your Article in Print . . . . .	6
New Scanner Workstation . . . . .	6
Gift Ideas . . . . .	7
Support the GFO While Shopping . .	8
New Books at the Library . . . . .	9
Focus on Archives, Part 1 . . . . .	10
Book Reviewers Wanted, Monthly Program, Interest Groups . . . . .	11
GFO Calendar . . . . .	12

Submissions to the *Insider*: Send comments, corrections, news, short success stories, and announcements to Jackie Olson, editor, at [insider@gfo.org](mailto:insider@gfo.org) or leave messages at the GFO desk, 503-963-1932. Provide submissions by the 7th of the month for inclusion in the following month's issue.

The *Forum Insider* [ISSN 1051-5666 (print), ISSN 2377-469X (online)] is the newsletter of the Genealogical Forum of Oregon Inc., 2505 SE 11th Ave., Suite B-18, Portland, OR 97202-1061. The Forum is a membership organization devoted to genealogical research, preservation, and education. The GFO publications promote the field of genealogy for the professional and the hobbyist. Dues are \$42 per year for individual memberships and \$63 for joint memberships. Membership includes subscriptions to the *Bulletin* (March, June, September, and December) and the *Forum Insider* (January, February, April, May, July, August, October, and November). Material from the *Forum Insider* may be reproduced provided credit is given to the publication, the author of the article, and the Genealogical Forum of Oregon. The *Forum Insider* staff includes Jackie Olson, Editor; Loretta Welsh, Publisher; and Jim Morrow, Assistant to the Publisher. Many thanks to everyone including our proofreaders, Susan LeBlanc, Laurel Smith, and Ellie Dir.

## ENSURING GFO'S FUTURE

*Continued*

right figure depends on a number of factors. GFO is a unique organization and the Board will need to carefully consider what vulnerabilities and potential challenges it could encounter. Having a reserves fund will put GFO in a more stable position to face future known and unknown challenges.

Why not tap GFO's endowment fund if needed? That would be unwise. Even in the case of an emergency, use of the endowment fund is limited to ten percent and would be in the form of a loan. GFO would be obligated to pay back every penny, with interest included, and any use for intangible items or services would violate the intended purpose of the endowment fund.

GFO has much to be proud of. With a strategic advantage of being the largest genealogical library between San Francisco and Seattle, the GFO remains strong, unlike some other similar societies. And it is run entirely by a dedicated group of volunteers with an eye towards cost efficiency and bringing value to its membership. Our library and other research resources continue to grow, in significant part due to generous donations and carefully considered acquisitions. This year GFO purchased a new film scanner and a new on-line subscription service, HistoryGeo. Last year a special scanner was purchased to enable data digitization of our manuscript collection. We continue to survey members to ask for feedback, and continue to research and evaluate other potential acquisitions, so stay tuned! It is my belief that with careful planning and stewardship GFO can continue to have a solid future for many years to come.



*Photographs: Misty Autumn Hucklberry Meadow, Jason Hollinger  
Fall colors around Sardine Road,  
Rob Midtun  
Crooked River National Grassland, OR,  
in fall, U.S. Forest Service*

### Library Closures

#### Holiday Hours at the GFO Library

We're entering the winter season, and hours at the library will change for Thanksgiving, Christmas, and New Year's holidays. The library will close early – at 1 pm – the day before and remain closed all day of the holiday. Also, in case of inclement weather, be sure to call the GFO before heading in to make sure the library is open.



## Webmaster Retires



**Larry Sullivan**

Larry volunteered to take over the Webmaster position about seven years ago when the original webmaster stepped down. He has turned the site into one that has been recognized as one of the best genealogical sites in the U.S., receiving *Family Tree Magazine's* award for Best State Genealogy Website for the last three years. He has also optimized it for mobile use and provided links to many other websites, making our site a valuable online research resource. Thank you, Larry, for many years of dedicated service to the GFO.

### ★★★ Wanted: Webmaster ★★★

In development: Be point-of-contact to assist with non-coding web updates. For the upcoming new website: Keep up with emailed requests for website updates, input data or news, and creatively keep the public and members informed about what's going on at the GFO.

Contact us at [info@gfo.org](mailto:info@gfo.org) for more information. Training is included.

## GFO Stars



*Diane, Diana, Loretta, Roger and Eileen*

### Oregon Vital Records Friday Morning Work Crew

“The Friday Morning Work Crew currently includes Eileen Chamberlin, Roger Edwards, Diane O’Dell, and Diana Smith and is headed by Loretta Welsh. The group has been quietly compiling information from the Oregon Vital Records that all researchers look for (birth, marriage, death, and divorce). The information is checked, indexed and made available to GFO members. Thanks to all the current and former members who have been involved in this data extraction group since 2002!”

### ★★★ Want to nominate a Star? ★★★

Has someone gone the extra mile? Helped you solve a knotty problem? Given the GFO more than we could expect? There’s a star for them. Complete a nomination form and submit it in the box near the front door at the GFO Library.

### Your Donations at Work



Researchers at the GFO Library are enjoying significantly faster internet speeds due to a recent shift to Comcast. We also changed our phone service so we can now return calls to members who would previously have required long distance calling—which we did not have.

We heard you! Attending classes in the back of the library used to mean coming early for the best seats—close to the screen so you could see. A new LARGE projection screen has been purchased and installed and visibility is much better.



# MISSING



**BOOKS  
CASSETTES  
PERIODICALS**

**Last Seen:  
GFO Library  
Portland, Oregon**

*As our volunteers work to reclassify and re-catalog the various collections at the GFO Library, we see that many items are missing. Some have been checked out and never returned. Others have just disappeared. In the Northwest Schools Collection alone, thirteen items are missing, and these have always been reserved books—not something that can be checked out of the Library. Our library books and materials are at the core of the GFO. We want our resources back!*

**November is Return Amnesty Month!**

Please bring back any GFO materials you might have.

No late fees.

No questions asked.

# HELP US PLEASE



## Volunteer Opportunities

### ∞ *Research Assistant and Receptionists*

Now that summer is over, vacations have been taken, and children are back in school, please consider giving a little bit of your time to the GFO. We need as much help as we can get to keep the library open seven days a week. There are vacancies that need to be filled as an RA (Research Assistant/Receptionist). No prior experience is needed ... we will train you on the job. Our most urgent need currently is Wednesday and Thursday afternoons.

If you're interested, please contact Cathy Lauer at [volunteer@gfo.org](mailto:volunteer@gfo.org) or call the reception desk. 503-963-1932, and leave a message.

### ∞ *Membership Assistant Needed*

As the GFO's membership grows, we need to make sure everyone is continually accounted for in our membership database. Volunteering as a Membership Assistant is an opportunity to become an expert at data transfers, data entry, and database research.

We're looking for you! Yes, you, with the excellent typing skills and incessant attention to detail. Training is included, and once completed most Membership Assistants can work on their own at any time during Library hours. This is also a great chance for students to add yet another impressive tool onto the resume. Contact Jane McGarvin at [membership@gfo.org](mailto:membership@gfo.org).

### ∞ *Manuscripts Scanners Needed*

Volunteer opportunities include organizing and re-labeling the paper files, scanning, pulling metadata from the collections, and researching the history of the collections' authors and/or highlighted families. To reach our goal of fully digitizing our over 100 manuscript collections and indexing all 28 of our family bibles will take many hands, and the truth is that volunteers like you are invaluable.

If you would just love to look through old documents of family histories and help to preserve all of this irreplaceable historical content, please contact either Nanci Remington or LauraDenise White at [manuscripts@gfo.org](mailto:manuscripts@gfo.org).

## Invitation to Discover the GFO

### Speakers for Your Group or Tours of the Library

Do you participate in a group or club that might like to learn about the GFO? We have speakers who would love to attend one of your meetings to give a presentation about our resources and provide one-time visitor passes to our research library. Your group could also visit the GFO for a free tour and our Introduction to Genealogy or Introduction to GFO Resources presentation. Any school, youth group, social club, resident association, religious group, or hobby club is invited to request a speaker for their gathering or to contact the GFO for a visit. Recently, we hosted the Rose City Model A Club. All groups are welcome.

Need more info about presentations? Send an email to [education@gfo.org](mailto:education@gfo.org). For more information or to schedule a tour email [tours@gfo.org](mailto:tours@gfo.org).



### Tuberculosis: The Forgotten Plague

<http://video.pbs.org/video/2365422268/>

With an historical death rate of up to one-fourth of the populace, tuberculosis was one of the worst diseases to hit a family. It was highly contagious and little understood until the early twentieth century. You may see it listed as a cause of death under other terms: consumption, phthisis or phthisis pulmonalis. For a view of the impact of tuberculosis on society, medicine, and even the settling of the west, check out *The Forgotten Plague*. It's free and available online.



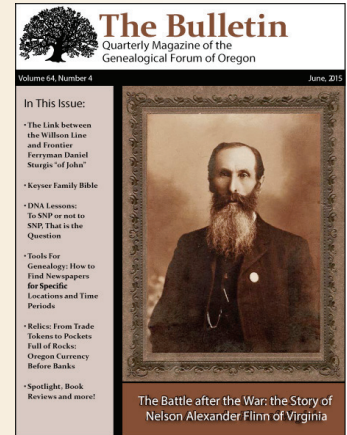
### See Your Article in Print!

The *Bulletin*, GFO's quarterly magazine is your publication. The editors hope you enjoy reading it, and we want to invite you to submit your family story, genealogy essay, or research report for publication. It is a great way to make sure your family's history is preserved and available to others in the future. And you will be able to pass your published article around at the next family gathering!

The magazine publishes a wide range of material including memoirs and personal essays, problem-solving articles, research articles and source guides, articles about family history travel, how-to articles, using technology, book reviews, and transcriptions or extractions from original sources.

General guidelines can be viewed [here](#), but don't let anything you see here discourage you. Be brave! Our friendly team of editors will help you get your article in shape, assuring that you (and the GFO) will look good. If you have an idea for an article, but are not sure if it's a good one, pitch it to the editors.

Send articles, ideas, and questions to Marti Dell and Laurel Smith at [Bulletin@gfo.org](mailto:Bulletin@gfo.org).



### NEW! Film Scanner Workstation

*Liz Stepp*

If you've been in the library lately, you may have noticed the new film scanner sitting next to a computer and tall monitor screen. For a few weeks now, the new scanner – purchased through generous member donations – has been up and running.

The scanner workstation's components work together: the computer with the software program installed, the monitor to view and select from the software menus and manipulate the images, and the film reader and scanner itself. To use the scanner, the computer is turned on first. It may look intimidating to some, but I found it easy to use as I explored the microfiche "Townlands of Ireland" kept in the microfiche cabinet now located beside this workstation. Also at the workstation are a nicely illustrated quick start overview guide and a more in-depth step-by-step guide to get anyone started.

The scanner's features include a USB port for a thumb drive and two speeds. The accompanying software makes it easy to browse, scan, or print. Three skill levels means a user can start with simple functions and advance on to more elaborate functions. Three operating modes, simple, standard, and advanced, provide access to any and all software features, including the ability to crop, manipulate visual qualities, make annotations, save, and print. This is a fabulous upgrade to GFO's suite of research tools! Any Research Assistant working in the library should be able to give you an introductory orientation. So, next time you are in, make sure to try it out!



*Liz Stepp, Loretta Welsh, and Cathy Lauer test drive the new scanner. A significant portion of the donation to purchase the scanner was in thanks to Cathy and Nedra Brill "for their dedicated volunteer work—giving hours of time to help other people."*



## Here are Some Gift Ideas for Any Occasion

### Gifts from Genealogists

Turn your findings, artifacts, and stories into gifts for the family. You may know all the smallest details of your families' stories, but perhaps others in your family know only parts. Decide first if you want to use original materials, or have copies made. This might be the case with special or irreplaceable objects, or when you want to make the same gift for several people. Photographs of objects can substitute for real ones.

**Charts, timelines, pedigree charts, and similar research findings in diagram form.** These could be as simple as a digital file you find online and fill out, or hand-drawn and written charts, framed for hanging. There are many resources for these options online.

**Make a display of your photos, postcards, maps, or other documents.** Frame them singly, in a collage, or place in photo albums. Some themes might be a person's life story, a family line, a place, or one person's travels, Using good-quality copies will preserve the originals.

**Write a story about a person or event, long or short.** Add photos or other illustrations. Present it in a simple binding or have it professionally printed and bound.

**Spend some time with a family member collecting memories and knowledge of their life or their family's lives.** Record or write it down to give them to share with others.

**Collect artifacts and make a shadow box.** Choose an event, a person's hobby or work tools, awards/medals, toys, or personal items. The background is a blank canvas to add photos or documents relevant to the subject.

**Create an art or craft piece that reflects your family members and their history.** Make a quilt, a painting, a song, boxes or other containers, or use any skill that you can turn into a special piece – something for the next generation.



### GFO Gift Membership

This is a gift that they will use year-round; one that supports their search into family and history. Sign them up at: <http://gfo.org/membership/index.htm>

### Gifts to Genealogists

From *Family Tree Magazine*: Ten useful items to help discover, preserve and celebrate your family's history.

[http://www.familytreemagazine.com/article/best\\_genealogy\\_gifts](http://www.familytreemagazine.com/article/best_genealogy_gifts)

50 Gifts for Genealogists, by Diane Boumenot, at One Rhode Island Family website.

<http://onerhodeislandfamily.com/2014/11/09/50-gifts-for-genealogists-2014/>

Ten great gift ideas for the genealogist in your family on Examiner.com:

<http://www.examiner.com/article/ten-great-ideas-for-the-genealogist-your-family>

### Gift Books from the GFO Surplus Books

On the surplus book sales shelves in the library, we have hundreds of basic genealogy books. You already have them? Maybe. Too old? Some. Too basic? Probably for you.

But what about your family and friends who come to you with basic questions? Or who don't use the Internet? Or those you would like to inspire to become more involved?

From old classic sources to new technology, for only \$2 to \$4, you can find many attractive items that would make great gifts.

And, as always, 100% of the revenue from surplus book sales goes to support the GFO.



### Supporting the GFO While Shopping

Here's an easy way to contribute to the GFO with your purchases. There are two customer programs that will donate to the GFO when you specify our organization as your favorite.

As the holiday season approaches, consider joining one of these programs and give not just to your family and friends, but to your favorite genealogy group.



#### Be One in 100: Use your Fred Meyer Rewards Card to effortlessly increase GFO Donations!

#### AmazonSmile

Do you shop at Fred Meyer and have a Rewards Card? If so, with a couple of easy steps and a few minutes you could link your Rewards Card number to GFO and automatically cause a donation from Fred Meyer to GFO happen each time you shop!

AmazonSmile is a program that rewards non-profit [501(c)(3)] organizations based on the customers' choice. The AmazonSmile Foundation donates 0.5% of the purchase price from eligible AmazonSmile products.

If you strive like I do to be a smart shopper, linking your Rewards Card number can be a "win-win." For example, I use my Fred Meyer Rewards Card every time I shop there and use the accumulated "points" to get a discount on my gasoline fill-ups. Since I have a linked card, at the same time a cash donation is accumulating with each purchase, earmarked for GFO. And, linking in this way does not diminish or take away from any points or Reward rebate checks you would otherwise receive.

Access to the program is through the web page [smile.amazon.com](http://smile.amazon.com), but it's the same shopping experience and you can use your existing Amazon account. Sign up at [smile.amazon.com](http://smile.amazon.com) and the site will remember the organization you have selected when you're shopping. We're listed as "Genealogical Forum of Oregon Inc"

The products will have "Eligible for AmazonSmile donation" on their detail pages. Only the purchase amount will qualify for the donation amount (no fees, charges, rebates, etc.)

GFO gets these donations through Fred Meyer's "Community Rewards," which is the corporation's separate donation program. Currently, GFO has only about 10 members with linked cards participating. Together they generated over \$30.00 in donations last quarter that will come directly to GFO.

To learn more, go to: <http://smile.amazon.com/about>.

Just think of what GFO could receive if 100 members linked their Fred Meyer Rewards Cards and continued to shop as usual: potentially \$300 in donations per quarter, or well over \$1,000 per year! With the many challenges that GFO faces, such donations would be most welcome, with the funds put to good use.



Your GFO membership fees are 100% tax deductible in keeping with our 501(c)(3) nonprofit status.

If you make a matching donation to the Oregon Cultural Trust, you may also be eligible for an Oregon tax credit: [www.culturaltrust.org](http://www.culturaltrust.org).



**New Books at the Library**

Here are some of the newest books added to our collection. The books in bold text were purchased with donor contributions. Check out the new books in our online catalog, or better yet, stop by the Library to see if they can answer any of your research questions.

For detailed instructions on using our catalog, please see the September 2015 issue of the *Bulletin*, page 25 or click [here](#).

## TITLE CALL NUMBER

*The Diller family* 929.2 Diller Ring

*The descendants of Hugh Montgomery, Sr: and some related families* 929.2 Montgome

*Our families: Shuck, Fleshman, Sydenstricker, Smith, Lewis, Kincaid, Keister, et al., of West Virginia* 929.2 Shuck

*Gloucestershire marriage allegations 1637-1680 (with surrogate allegations to 1694)* 941.3 Glou VR-M 1637-1680

*Marriage bonds for the Diocese of Bristol, excluding the Archdeaonry of Dorset* 941.3 Glou Bris VR-M v1 1637-1700

***Genealogy and the law in Canada*** 971 .How-To Law 2010

*Plymouth, New Hampshire families* 974.25 Plym .Genea Stea  
*History of Exeter, New Hampshire* 974.25 Rock Exet .Hist-Au Bell

*A history of the town of Poultney, Vermont, from its settlement to the year 1875* 974.35 Rutl Poul .Hist-Au Josl

*History of the town of Gloucester, Cape Ann, including the town of Rockport* 974.45 Esse Glou .Hist-Au Babs

*Eastern Point: a nautical, rustical, and social chronicle of Gloucester's outer shield and inner sanctum, 1606-1950* 974.45 Esse Glou .Hist-Yr 1606-1950

*The history of Newburyport, Massachusetts, 1764-1905 (2 volumes)* 974.45 Esse Newb .Hist-Yr 1764-1905 v1

*The Hampshire history, celebrating 300 years of Hampshire County, Massachusetts* 974.45 Hamps .Hist-Au Wika

***Rhode Island in the American Revolution: a source guide for genealogists and historians*** 974.50 .Mil-Yr 1775-1783 Sour

***New York in the American Revolution: a source guide for genealogists and historians*** 974.70 .Mil-Yr 1775-1783 Sour

*The crossroads of western New York : Lima, 1788-1964 : outline of the history of Lima* 974.75 Livi Lima .Hist-Yr 1788-1964

*Index to the Virginia court records in Pennsylvania (District of West Augusta)* 974.80 .Court Virg 1775-1780

*Genealogical abstracts of the laws of Pennsylvania & the statutes at large* 974.80 .Govt Law 1624-1820

***Selected final pension payment vouchers, 1818-1864: Pennsylvania (2 volumes)*** 974.80 .Mil-Yr 1775-1783 Pens Paym v1

*The Mendhams* 974.95 Morr Mend .Hist-Yr 1664-1964

*St. Mary's County, Maryland wills, 1836-1857* 975.25 SaiM .Court EstW 1836-1857

***South Carolina in the American Revolution: a source guide for genealogists and historians*** 975.70 .Mil-Yr 1775-1783 Sour

*Abbeville County marriages, 1780-1879: implied in Abbeville County, South Carolina, equity records* 975.75 Abbe .VR-M 1780-1879

*Georgia in the American Revolution : a source guide for genealogists and historians* 975.80 .Mil-Yr 1775-1783 Sour

*Carroll County, Georgia cemeteries : volume 1, land districts 7,8,9,10,and 11 (western section)* 975.85 Carr .Cem West

*1770-1790 census of the Cumberland settlements: Davidson, Sumner and Tennessee Counties (in what is now Tennessee)* 976.85 Davi .Cens 1770-1790

*Kentucky rising : democracy, slavery, and culture from the early republic to the Civil War* 976.90 .Hist-Au Rama

*Kentucky : decades of discord, 1865-1900* 976.90 .Hist-Yr 1865-1900 Tapp

*The Civil War in the Big Sandy Valley of Kentucky* 976.90 .Mil-Yr 1860-1868

*The Wilderness road to Kentucky: its location and features* 976.90 .Trans Wild Puse

*The Wilderness Road: a description of the routes of travel by which the pioneers and early settlers first came to Kentucky.* 976.90 .Trans Wild Spee

*Annals of Floyd County, Kentucky, 1800-1826* 976.95 Floy .Court 1800-1826

*Circuit Court records, 1808-1824, Floyd County, Kentucky* 976.95 Floy .Court Circ 1808-1824

*County Court records ... Floyd County, Kentucky (9 volumes)* 976.95 Floy .Court Coun v1

*Cemeteries of Liberty Township, Fairfield County, Ohio* 977.15 Fair .Cem Libe

*The Prairie sleeps* 977.35 Cole .Cem v3

*Doorways into history* 979.50 .Hist-Au Bldg Harp

*Clackamas County, Oregon, plat maps 1894* 979.55 Clac .Maps 1894

***A pictorial history of Astoria, Oregon: the early years.*** 979.55 Clat Asto .Hist-Au Pict

***At the hearth of the crossed races : a French-Indian community in nineteenth-century Oregon, 1812-1859*** 979.55 Mari Cham .Hist-Yr 1812-1859

***Index to Pacific Northwest quarterly, volumes 1-100*** 979.70 .Per PNQ v1-100 Index WHQ

***Voters' list and poll book, No. 55 Myrtle Point South Precinct in Coos County, Oregon, for the primary nominating election to be held in said precinct on May 21, 1948*** RARE 979.55 Coos Myrt .Vote 1948



### Focus on Local Archives, Part 1

In celebration of National Archives Month (October actually), a collection of archives representatives met with the public at the Portland Archives and Records Center. In addition to the opportunity to learn more about archives in the region, there was a tour of the archives, and examples of the holdings were on display. There are more archives listings to come in January.

Portland Archives and Records Center  
1800 SW 6th Ave, Suite 550, Portland  
503-865-4100

<http://www.portlandoregon.gov/auditor/archives>

Online Efiles database: <http://www.portlandoregon.gov/efiles>

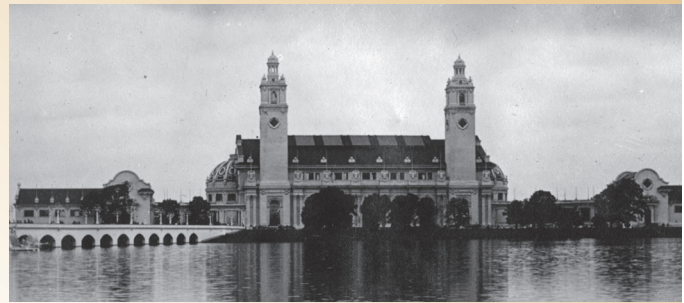
This archive stores records of the city’s life since the earliest days. There are documents, maps (including a large collection of Sanborn Fire Insurance Maps), plans, and photographs from the city’s bureaus and elected officials. A few of the holdings include: city council reports, correspondence, policies, bills for work performed for the city, police logs, and files covering urban planning, parks and recreation, land use, public works, and social issues.

Research or access is during working hours, or you can search the online database, Efiles. Not all records are digital, but contents of records are indexed – more all the time – and what is digital can be viewed online. Records that are accessed by researchers are scanned and added to the database.

Oregon Jewish Museum and Center for  
Holocaust Education  
1953 NW Kearney St., Portland  
503-226-3600

<http://www.ojmche.org/>

This archive holds documents, photos, and oral histories of Jewish families and community in Oregon. They sponsor exhibits, tours, and events. Research is available at the museum and center. Onsite research is by appointment only. The records include the archives of the Jewish Historical Society of Oregon, and the Oregon Holocaust Resource Center. There are a few oral histories online. Some



*View of the Lewis and Clark Exposition, November 1905. City of Portland Auditor’s Office:Efiles. Record AP/34420.*

finding aids to family collections are housed at PSU (University Archives & Special Collections website under Oregon Jewish Museum).

Current exhibit: “Auto/Biography — Portraits of People With Cars” through November 8, 2015.

Oregon Health & Science University  
Historical Collections and Archives  
3181 SW Sam Jackson Park Blvd, Portland  
503 494-5587

<http://www.ohsu.edu/xd/education/library/about/collections/historical-collections-archives>

OHSU Archives has collections of documents, rare books, and artifacts on their history and the history of medicine, available for research, teaching, and private study. These include the transcripts and interviews which are part of the OHSU Oral History Program.

Exhibits and the OHSU History of Medicine Society lecture series are open to the public.

Research walk-in hours Thursday afternoon, other hours by appointment. No online records. Current exhibit through December 2015: Pioneering Nursing Education in Oregon



*Construction of Portland’s Harbor Wall, August 1928. City of Portland Auditor’s Office:Efiles. Record AP/2026.*



### Book Reviewers Needed

All the books on this list are available for review as of this writing, but we can't put them on the shelf until they have been reviewed.

They have been donated to the GFO by Genealogical.com on the condition that we review them in one of our publications. Writing a review is easy with a template that we can forward to anyone interested.

*Evidence Explained: Citing History Sources from Artifacts to Cyberspace, third edition*, Elizabeth Shown Mills, 892 pages, 2015.

*QuickSheet: Citing Genetic Sources for History Research, Evidence! Style*, Elizabeth Shown Mills, 4 pages, 2015.

*Manitoba Scrip, second edition*, compiled by Gail Morin, 332 pages, 2015. (Scrip was either land or money given to people of European and Native Canadian heritage.)

*Northwest Half-Breed Scrip, 1885, revised edition*, compiled by Gail Morin, 287 pages, 2015.

We'd like to get these books on the shelves for patrons, and we want to keep the flow of free books coming. Won't you please review a book or two? Contact [bookreviews@gfo.org](mailto:bookreviews@gfo.org)

### Monthly Program

Saturday, November 2; check online calendar  
GFO Library

Kristin Winn and Richard Santee will talk about their efforts to place the cremains (from the Oregon State Hospital) of Jennie Fisher in her family plot.

### DNA—Why test? What kind of test? What will I learn?

Saturday, November 14; 10 am–12 pm

Genealogical Society of Washington County

Lisa McCullough will answer the questions above.

Library Main Branch  
2860 NE Brookwood Pkwy  
Hillsboro, OR

<http://www.gswco.org/>

### Special Interest Groups

<http://gfo.org/intgrp/index.htm>

#### British

4th Saturdays in odd months;  
1–3 pm — Duane Funk  
[duanefunk@comcast.net](mailto:duanefunk@comcast.net)

#### DNA

See GFO calendar for date and time  
(<http://gfo.org/intgrp/index.htm>);  
— Emily Aulicino  
[aulicino@hevanet.com](mailto:aulicino@hevanet.com)

#### Family Tree Maker

3rd Sundays; 1–3 pm  
— Laurel Smith  
[bearpair@comcast.net](mailto:bearpair@comcast.net)

#### Genealogy Books

2nd Saturdays in odd months;  
11:45 am–12:45 pm  
— Bonnie Randolph  
[bbrandolph@clear.net](mailto:bbrandolph@clear.net)

#### German

1st Saturdays monthly; Sep–Jun;  
1–3 pm — Nanci Remington  
[nancicr@comcast.net](mailto:nancicr@comcast.net)

#### Illinois and Its Neighbors

2nd Saturdays monthly; 9:30–11:30  
am — Kristy Gravlin  
[hannah@teleport.com](mailto:hannah@teleport.com)  
Harlene Patterson  
[harlene5@yahoo.com](mailto:harlene5@yahoo.com)

#### Irish

3rd Saturdays in odd months; 12–2  
pm — Suzanne Lemon  
[slemon46@yahoo.com](mailto:slemon46@yahoo.com)

#### Italian

Saturday May 30, Jul 25, Nov 28;  
12–2 pm — Keith Pyeatt  
[k\\_pyeatt@yahoo.com](mailto:k_pyeatt@yahoo.com)

#### Photoshop Elements

2nd Wednesdays monthly;  
1:30–2:30 pm — Sarah Holmes  
[slh@sarahholmes.com](mailto:slh@sarahholmes.com)

#### Virginia

1st Saturdays monthly, Sep–Jun;  
10 am–12 pm — Judi Scott  
[judiscot@gmail.com](mailto:judiscot@gmail.com)  
Carol Surrency  
[lcsurr@gmail.com](mailto:lcsurr@gmail.com)

#### Writers' Forum

2nd Saturdays monthly, Sep–May;  
1–3 pm — Peggy Baldwin  
[peggy@familypassages.com](mailto:peggy@familypassages.com)  
Carol Surrency  
[lcsurr@gmail.com](mailto:lcsurr@gmail.com)

*The Forum Insider*  
 Genealogical Forum of Oregon  
 2505 SE 11th Ave., Suite B-18  
 Portland, OR 97202-1061

ADDRESS SERVICE REQUESTED

Non-Profit Organization US POSTAGE PAID Portland Oregon Permit No. 745
---



**November 2015**

**GFO Calendar**

<http://gfo.org/calendar.htm>

**Library Work Parties ~ every month, all welcome**

Sundays 9 am–12 pm Map project on 2nd Sunday, other projects on remaining Sundays

~~~~~ **November** ~~~~~

|            |                                                |                                                  |
|------------|------------------------------------------------|--------------------------------------------------|
| Mon 11/2   | <b>Free to Non-Members</b>                     |                                                  |
| Wed 11/4   | 10 am–12 pm                                    | Learn and Chat                                   |
|            | 1–2 pm                                         | DNA Q & A                                        |
| Sat 11/7   | 10 am–12 pm                                    | Virginia Group                                   |
|            | 1–3 pm                                         | German Group                                     |
| Tues 11/10 | 6–8 pm                                         | Board meeting                                    |
| Wed 11/11  | 1:30–2:30 pm                                   | Photoshop Elements Group                         |
| Sat 11/14  | 11:45 am–12:45pm                               | Genealogy Book Group                             |
|            | 1–3 pm                                         | Writers' Forum                                   |
| Sun 11/15  | 1–3 pm                                         | Family Tree Maker Group                          |
| Wed 11/18  | 10 am–12 pm                                    | Learn & Chat                                     |
|            | 1–2 pm                                         | DNA Q&A                                          |
| Sat 11/21  | 9:30–11 am                                     | Hunting and Gathering                            |
|            | 12-2 pm                                        | Irish Group                                      |
|            | 2–4 pm                                         | Monthly Program— Kristin Winn and Richard Santee |
| Thu 11/26  | <b>Thanksgiving Day holiday—Library closed</b> |                                                  |
| Sat 11/28  | 12–2 pm                                        | Italian Group                                    |

~~~~~ **December** ~~~~~

|           |  |                          |
|-----------|--|--------------------------|
| Wed 12/2  | 10 am–12 pm                              | Learn and Chat           |
|           | 1–2 pm                                   | DNA Q & A                |
| Sat 12/5  | 10 am–12 pm                              | Virginia Group           |
|           | 1–3 pm                                   | German Group             |
| Mon 12/7  | <b>Free to Non-Members</b>               |                          |
| Tues 12/8 | 6–8 pm                                   | Board meeting            |
| Wed 12/9  | 1:30–2:30 pm                             | Photoshop Elements Group |
| Sat 12/12 | 9:30–11:30 am                            | Illinois Group           |
|           | 1–3 pm                                   | Writers' Forum           |
| Wed 12/16 | 10 am–12 pm                              | Learn & Chat             |
|           | 1–2 pm                                   | DNA Q&A                  |
| Sat 12/19 | 9:30–11 am                               | Hunting and Gathering    |
| Wed 12/24 | <b>1pm</b>                               | <b>Library closed</b>    |
| Thu 12/25 | <b>Christmas holiday—Library closed</b>  |                          |
| Wed 12/31 | <b>1pm</b>                               | <b>Library closed</b>    |
| Thu 1/1   | <b>New Year's holiday—Library closed</b> |                          |