

GENEALOGICAL FORUM OF OREGON'S

Spring Seminar

We welcome....
LARRY JENSEN

Author of
**A Genealogical Handbook of
German Research**



SEMINAR FEATURES

- Book Vendor
- Genealogical Treasures
- Other Genealogical Societies
- GFO Surplus Book Sale

APRIL 18, 2009

at the
Milwaukie Elks Lodge
in Milwaukie, Oregon
*Located at South edge of Milwaukie on
McLoughlin Blvd near the Park Street
Intersection .. north of the Bomber*

REGISTRATION AT SEMINAR: 8-9 A.M. April 18, 2009 SATURDAY

*First Class starts at 9:15 a.m with a morning break, one-hour lunch, afternoon break, program ends
4:00 p.m. Snacks & drinks at morning and afternoon breaks come with your price of admission.*

Jensen Spring Seminar Sign-up Form April 18, 2009

Name _____ Member # _____

Phone or Email _____

Address _____

City, State & Zip _____

MEMBERS
 {} \$38 if received by April 11th
 {} \$45.00 if received after April 11th (no lunch)

NON-MEMBERS: () \$43 before April 11th () \$50 after April 11th (no lunch)
 {} Lunch: \$12.00. Must be requested by April 11th TOTAL \$ _____

**MAKE CHECKS PAYABLE TO GENEALOGICAL FORUM OF OREGON
OR "GFO", PO BOX 42567, PORTLAND OR 97242-0567**

LUNCH

The buffet luncheon for \$12 will include two hot buffet items and three cold buffet items, plus potatoes, vegetable, rolls, & beverage. All coffee, tea, hot water included. Lunch in the Elks Dining Room with payment for lunch.

Space available for brown baggers, too.

**OREGON'S 150TH BIRTHDAY
IS SATURDAY, FEBRUARY 14, 2009**

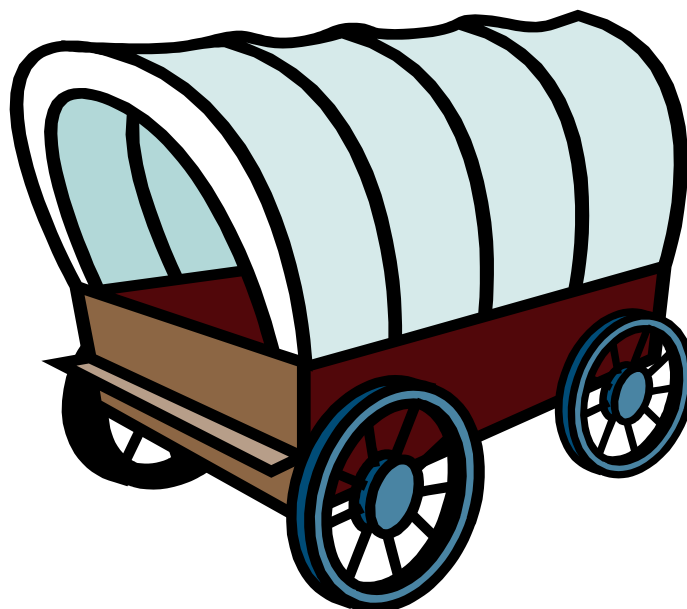
Join the free party at the GFO Open House 9:00 a.m. to 3:00 p.m.

Celebrate the day Oregon Became A State,

Enjoy refreshments!

BRING

FRIENDS



Hear the speakers:

**10:00 a.m.-Using the GFO Library for Research
Sandi Whiteman, Library Director**

**11:00 a.m.-African-American History of Oregon
Dr, Joyce Harris, Director of the Equity Program at the Northwest Regional
Educational Laboratory**

**1:00 p.m.- Recycled History-John Terry, Oregon history columnist,
The Oregonian newspaper.**

**2:00 p.m.-Oregon Donation Land Claims-Gerald Lenzen,
GFO member and DLC specialist**

Ask the experts Throughout the day, members of the Oregon Chapter of the Association of Professional Genealogist will assist visitors with ancestral and historical research. Sign up for an appointment when a volunteer will give you undivided attention.

Use research resources Visitors may see demonstrations and use the library and our Internet access to genealogy databases and other research resources.

The Forum Insider

NEWSLETTER of

THE GENEALOGICAL
FORUM OF OREGON
www.gfo.org

1505 SE Gideon St
Near the Intersection of SE
Powell and SE 12th Ave /
Milwaukie Ave.
503-963-1932

Mailing Address:
P.O. Box 42567
Portland, OR 97242-0567

Monthly Membership Meetings:

Second Saturday of each
month at 2:00 p.m. with a
speaker.

Library Hours

Mon-Tues-Wed-Thurs
9:30 to 5 p.m.
Saturdays: 9:30-3 p.m.
Sun: 12-5 p.m.
Closed Fridays

SUBMISSIONS to the INSIDER

Feedback, Corrections, News,
Short Success Stories,
Announcements to
Janis Bailey, editor, at
jbailey172@comcast.net
Or leave messages at GFO
desk 503-963-1932
Submissions by the 7th of the
month for inclusion in the
following month's issue

Opinions expressed in this
Newsletter are not necessarily
those of the Genealogical Forum
of Oregon.



INSIDE THIS ISSUE

Spring Seminar Flyer	1
Oregon's 150th Celebration Open House	2
President's Message	4
Arctic Blast	4
Finding Ancestors Through DNA.....	5-6
Calkins Family Reunion	6
Connie's Corner	7
Oregon Cultural Trust	8
New Library Books	9-10
Editor's Note.....	11
Lost & Found.....	11
Calendar of Events.....	12

**THE GFO MEMBERSHIP FEES OF \$30 A YEAR
ARE 100% TAX DEDUCTIBLE
IN KEEPING WITH OUR 501 c (3) NON-PROFIT EDUCATION
STATUS**

PRESIDENT'S FEBRUARY MESSAGE

Each year, nominations for GFO Board positions offer an opportunity for an infusion of new ideas and leadership. This year we will select a new president, treasurer and a member-at-large. To volunteer or nominate a candidate for the offices of president and treasurer, please contact Bruce Conrad, chair of the nominations committee. Nominations for the member-at-large must come from the floor at the April 11th monthly meeting. If you have a nomination in this category, please make sure the person is willing before putting forth a name.

For two months the Board has been considering the impact of the severe financial crisis on the GFO budget. We have also considered the potential impacts of the expected transition to different facilities in about 18 months resulting from the Max expansion. We think it is unreasonable to assume we can find comparable space and the flexible parking arrangement for the extremely low rate we now enjoy. We believe we need to begin now to prepare a financial structure that recognizes those realities.

The Board has moved in the last two years to improve our presence in technology through equipment upgrades, wi-fi, and access to the Ancestry databases and other Internet resources. We've redesigned and expanded our web site. We've also moved to increase the value of our library through acquisition and assiduous culling of the collections with an attendant increase in book sales. Given the directions we see in the field of genealogy, it is in the best interest of the GFO to maintain and enhance both the technology and library aspects of the organization.

However, operational costs including especially paper and postage are increasing, and our membership fee income has not kept pace with inflation since it was last changed 12 years ago. Fees do not cover our lease costs, and we depend more and more on gifts. Since August, investments in both the operating reserves and Endowment funds have suffered high losses in value, with the result that we cannot afford to go over budget, and we cannot expect the general fund to receive the past levels of income from the Endowment. Our current estimate of the overall impact of these factors on our budget is a deficit on the order of \$6000 annually in FY2009 and 2010.

At its meeting of January 13, the Board decided on a tow-part strategy of increasing income and cutting expenditures. Beginning March 1 we are implementing the first phase of the strategy. On the expenditure side, we are reducing the budget by about \$2,000 annually, the bulk of which comes from terminating the lease on the lower storage area.

We will also include the elections ballot in the April Insider instead of paying for a separate mailing. On the income side, we are investigating the addition of a shopping cart on our web site, (for book sales) and we are increasing fees on the following schedule:

Annual Membership:

Single: \$40, but \$35 if the member chooses to receive publications electronically

Joint: \$55 per year, but \$50 if publications are received electronically

Non-member Research Fee: \$7 per day

In the next month, we will be investigating other ways to increase income and reduce expenses, and will be notifying members of any additional changes we think are necessary in order to meet our fiduciary responsibility. We believe the changes being implemented, while perhaps unpopular, are necessary to enable the GFO to survive the economic situation over the next two years and address a new set of circumstances in new facilities.

—Don Holznagel, President

ARCTIC BLAST

The last of December was a nasty couple of weeks weather-wise, and we weren't able to keep the library open. On the positive side, maybe a time of forced enclosure gave you a chance to get your research records organized. On the negative side, you had fewer opportunities to do more research. Our building suffered two minor problems, neither disastrous. First, a leak caused water to gather on the floor of the lower storage area which damaged some cardboard containers on the floor, but the contents were not completely lost. A second leak allowed water into the storage area behind the Higgins Room, but damage was limited to ceiling tiles.

So all in all, we were lucky. Jim Morrow and the building manager were on top of the problem early on, and repair companies were onsite with bids very quickly.

It was somewhat awkward getting the word out about closures. The Board decided at its January meeting to set up a remote change process for the message on the phone answering system as its notification of closure. Also, regardless of conditions at the library, if the volunteers can't make it from their location, the library will close.

— by Don Holznagel

HELP SUPPORT GFO

Shop online for merchandise and subscriptions that give GFO a commission. Go to the GFO Web Site, where you will see "Support Us" on the right-hand side. Click on **Amazon**, **Heritage Books** or **Family Tree DNA** (to order a test kit for which you will receive a discount.)

Subscribe to **World Vital Record** or **Footnote.com**. These must be ordered through the Web Site for GFO to earn a commission.

FINDING ANCESTORS THROUGH DNA

by
Emily Aucilino

All genealogists find their lineage stops at some point...the proverbial brick wall. As records have been lost, burned or never existed to help us tunnel through that brick, a new tool in the genealogist's toolbox, just may be the answer. That new tool is DNA testing.

DNA testing for genealogists began in 2000 and has rapidly grown ever since. That year, Bennett Greenspan, founder of Family Tree DNA, started the first company to sell DNA test kits to and for genealogists. Today his company handles the testing for the National Geographic Genographic Project and has the largest database for genealogists. Bennett is a genealogist. DNA testing continues reaching various milestones and has helped genealogists in many ways.

Through DNA testing, you may find a match between your surname and that of another tester who has a documented family tree that could add to your information. By finding other researchers with whom you have a common ancestor (a DNA match), you could focus on the missing generations between your families. ALSO, DNA testing rules out persons with the same surnames who are not a genetic match, thus allowing you to focus on lines that are definitely related to you.

The DNA results will not tell you the name, place, or time the common ancestor lived, but will tell you there is a common male ancestor between two or more testers. This is called the Most Recent Common Ancestor (MRCA) by geneticists.

Depending upon the number of markers tested and the quality of the match, DNA results can provide a time frame in which the common ancestor has a high probability of existing. Basically, the following list indicates the highest probability.

- If there is a match for a...
- ...12 marker test, the MRCA is prior to 600 years ago.
- ...25 marker test, there is a 95% probability of an MRCA being within the last 600 years.
- ...37 marker test, there is a 95% probability of an MRCA being within the last 300 years.
- ...67 maker test, there is a 95% probability of an MRCA being within the last 150-200 years.

NOTE: A match is considered to be an exact numerical copy up to a genetic difference of four.

Genetic Difference is the numerical differences between two person's markers. This is calculated in two different ways depending upon the particular marker. Most generally you can just subtract the two numbers in each marker (allele) to get the difference. When you have differences in fast mutating markers which have various parts to them (indicated by red on the Family Tree DNA websites

(<http://www.familytreedna.com/>) and having a small alphabetic number after the name of the marker. EX: 464a or CDYb), these are often (not always) considered a difference of one although the various parts of the one marker could have differences in all parts. For example: 464 has several parts...a to g. If someone has the results below, they would still have a genetic difference of one.

```

.....464a....464b....464c....464d
Tester 1: .....16.....17.....17.....16
Tester 2: .....16.....16.....16.....16

```

After finding a good match, it is very important to check your paper trail and to test a distant cousin of both testers who matched. In this case, go back to the oldest known ancestor and (continued on next page)

The Forum Insider (ISSN 1051-5666) is the newsletter of the Genealogical Forum of Oregon Inc., PO Box 42567, Portland OR 97242-0567. The Forum is a membership organization devoted to genealogical research, preservation, and education. The GFO publications promote the field of genealogy for the professional and the hobbyist. Dues are \$30 per year for individual memberships and \$45 for joint memberships. Membership includes subscriptions to *The Bulletin* (March, June, September, and December) and *The Forum Insider* (January, February, April, May, July, August, October & November). Material from *The Forum Insider* may be reproduced provided credit is given to the publication, the author of the article, and the Genealogical Forum of Oregon. *The Forum Insider* staff includes Janis Bailey, Editor; Loretta Welsh, Print Shop Manager; Dixie Read & Jim Morrow, Printers; Shirley Durkheimer, Collating; and Agnes Nuttbrock, Mailing Labels .

Finding Ancestors through DNA (Continued)

bring an all-male line forward to the present on a son different than that of the person who tested. This could be a person you do not know and probably is. However, after contact and after getting to know them, you may convince them to test, but you may have to help pay for their test. The idea is to confirm that your DNA is that of your paper trail and your surname. Since time began our ancestors have taken in the orphaned children of the neighborhood. Many adoptions and name changes have existed over these thousands of years without any written record...even into the 20th century. By testing more than one person on a surname, you can determine if any adoptions (formally or informally) have taken place.

After you have tested a distant cousin and proven your DNA matches his, then you are ready to compare your results with other testers to find more cousins. At this point you should be in contact with persons matching your test results and comparing your pedigrees.

If you find that both your lines are in the same general areas, then it's back to basic genealogy research to find the paper trail which supports the DNA match. If you can't find that common land area (county, etc), consider the brothers and uncles along the same branch of your pedigree chart. The two testers could be related through an uncle's family who came to the area. Sometimes it is necessary to test the descendant of other people in the area who bear the same surname.

As more people test...and hundreds are doing so weekly...the number of potential matches will increase. The more matches you find the easier to narrow down your MRCA. DNA testing can be helpful for the present and even more valuable in the future.

These are exciting times and the field of genetics is moving quickly. It has been said that within the next twenty years genealogists will start with their DNA first and then work on the paper trail. At the rate genetics is moving this will happen sooner. More and more people are beginning to understand how genetics can help genealogy. Those who use this new tool no longer consider themselves genealogists, but are proudly called Genetic Genealogists.

To order a DNA test, go to www.gfo.org and click on the Family Tree DNA icon. The Forum receives a percentage of your cost to use in its general fund. This money doesn't affect your cost in anyway and comes directly from the company.

Email me if you have questions before you order your test. If you need help, I can call you or email you to walk you through the process.

Emily <aulicino@hevanet.com>

CALKINS FAMILY REUNION

The Calkins Family Association is sponsoring its 5th tri-annual International Calkins Family reunion to be held in Syracuse, NY April 30, May 1st and 2nd, 2009. The invitation is extended to all descendants of our original ancestors, Hugh and Ann Calkins, who landed in North America in 1638. For more information and costs contact Minnie Frese, 509 Rusagonis Rd., Rusagonis, New Brunswick, Canada E3B 8Z3, phone 506-357-3841; e-mail: minmin@nbnet.nb.ca

The event includes a Thursday evening get acquainted party with refreshments. Friday will be an all-day bus tour of interesting places, and Saturday morning a workshop. Saturday afternoon a business meeting and Saturday evening, banquet with world known genealogist, Gary Boyd Roberts of Boston, MA as guest speaker.

Connie's Corner

CIVIL WAR TAX

By Connie Lenzen

On 1 July 1862, legislation was established to help the United States pay for a war that we call the Civil War. Congress passed the Internal Revenue Act that established an office of the Commissioner of Internal Revenue with an annual salary of \$4,000. The states and territories were to be divided up into collection districts, each with their own collector. On 1 August 1862 and the first Monday of May in each year thereafter, the collectors and their assistants were to make a list of people who were liable for taxes. Individuals who had an income of over \$600 were required to pay a 3% tax. If income was over \$10,000, the tax rate was 5%.

There were numerous other features to the Act; duties were placed on gross receipts of transportations companies. Licenses were required for bankers, auctioneers, wholesale and retail dealers, pawnbrokers, distillers, brewers, tobacconists, livery stable keepers, soap-makers, and many more. Licenses were required for eating houses, theatres, circuses, bowling alleys, and billiard rooms. Digitized images of the tax lists are on Ancestry.com, one of the databases that GFO members and guests can use on the GFO Library computers.

In Oregon, where the assessors were given an extra stipend due to the increased cost of travelling, people were taxed on valuables, their gross receipts, and their occupations.

In 1868, in Oregon's Division Number Four, roughly Clackamas, Marion, and Polk Counties, L. Ground of Independence paid \$10 for keeping a livery stable. James McKay of Salem paid \$10 for being a manufacturer. The Willamette Steamboat Company of Oregon City paid \$10.77 tax on passage receipts and \$6.25 on their hotel receipts.

An inspection of the tax lists shows few people earned over \$600 per year, and these people lived mainly in Portland. In 1867, in Division Three, the Portland area, there were 281 people who paid tax on their income.

Some of these individuals were involved in land development. Stephen Coffin, one of the founders of Portland, paid \$40.65 tax on income of \$5,773 and a watch. John H Couch paid \$233.05 tax on \$4,621 income and watch; W. S. Ladd, the banker, had paid \$1,531.30 tax on his income of \$30,271, watch and 315 ounces of silver plate.

Some merchants paid hefty taxes. Henry W. Corbett paid \$989.40 tax on \$17,145 income, a watch, 63 ounces of silver plate, and his wholesale dealer license. Henry Failing paid tax on his \$15,953 income, watch, silver plate, and his wholesale dealer license.

Physicians paid a \$10 license fee. Some doctors, like Fan See, a Chinese physician, did not have \$600 income. Others, like James C. Hawthorne, the owner of the Hawthorne Hospital and Asylum, and his partner A. M. Loryea had incomes over \$10,000.

For further reading: Cynthia G. Fox, "Income Tax Records of the Civil War Years, *Prologue Magazine*; digital article, National Archives (<http://www.archives.gov> : accessed 16 December 2008).

MEMBERS' Favorite Websites:

- www.gfo.org
- www.archives.gov/aad/
- www.usgenweb.com
- www.rootsweb.com
- www.cyndislist.com
- www.familysearch.org
- www.ancestry.com
- www.nara.gov
- www.sos.mo.gov/archives/
- www.multcolib.org
- www.ohs.org
- www.ccg-s-wa.org
(Clark Co Gen Soc)
- [www.sos.state.il.us/
departments/archives/
archives.html](http://www.sos.state.il.us/departments/archives/archives.html)
- [www.genealogy.az.gov/
index.htm](http://www.genealogy.az.gov/index.htm)
- www.DAR.org
- www.theshipslist.com
- [http://abish.byui.edu/
specialCollections/
westernStates/search.cfm](http://abish.byui.edu/specialCollections/westernStates/search.cfm)
(Western States Marriages to 1928)
- www.kshs.org (Kansas)
- www.ellisland.org
- www.heritagequestonline.com (through multcolib.org)
- www.findagrave.com
- www.footnote.com \$ (free for 1st week)
- www.genuki.org.uk
- www.genealogy.com \$
- www.GenealogyToday.com
- www.interment.net (cemetery inscriptions)
- www.ObitCentral.com

\$ = Fee Sites

GFO PARTICIPATING IN OREGON CULTURAL TRUST

As of Dec. 1, the Genealogical Forum of Oregon Inc. has been approved by the Oregon Cultural Trust as a participating non-profit cultural organization. This means that a person who donates funds to the GFO qualifies to donate a matching gift to the Trust which is eligible for the Oregon cultural tax credit. For example, if a person donates \$50 to the GFO, they may then donate a matching \$50 to the Cultural Trust identifying GFO as their qualifying organization, and may claim the Trust gift as a tax credit on their Oregon tax return. You will find complete information about the Trust, forms for submitting gifts, gift limits, and information about the tax advantages on their web site www.culturaltrust.org. Please also contact your tax preparer regarding the benefit to you. Although the GFO is now included on their web site, we have their approval letter in hand and are therefore a qualifying organization.

Further Answers to Questions from GFO Members

1. Can a gift to the Trust match several organizational gifts? Answer: Yes. For example, if you gave \$100 to GFO, \$100 to OPB and \$100 to another qualifying organization, you could give the Trust \$300. The maximum allowed total match is \$500 individual and \$1000 from a couple. The Trust's web site has a searchable list of the 1200 qualifying organizations.
2. Even though I gave to GFO before our approval on Dec. 1, can I match those gifts also? Answer: Yes. You can match the total of all gifts to approved organizations in 2008 up to the limits above.
3. Are both the GFO and Trust gifts deductible? Answer: In different ways. The GFO gift may only be shown as a regular deduction, and only the Trust gift can be a credit against your tax. There is a specific line in the Oregon return for the Trust credit to be subtracted from the tax.

See the Trust's web site www.culturaltrust.org for forms and info. A small form may be downloaded for donating to the Trust, and they are also sending Don a supply of them to put at the library.

Editor's Note: The inclement weather meant the volunteers were not able to complete the mailing process for the Insider, which delayed the January delivery for over a week. It couldn't have been helped. It was an act of nature, but we're sorry for any inconvenience. (j.b.)

SENIORS, ALERT!

Portland Parks & Recreation is seeking an over-all 5% reduction in its budget. There is a very real possibility that Recreation for Seniors will see a reduction or elimination of some of its specialized classes, such as genealogy, crafts, dance cooking and many others.

In a budget meeting held Saturday, January 10, 2009, Portland Commissioner, Nick Fish said he welcomes feedback before final decisions are made.

His phone number and mailing address are :
Nick's Office Front Desk: **503-823-358**
Commissioner Nick Fish 1221 SW 4th Avenue,
Suite 340 Portland, Oregon 97204

GFO LIBRARY CLOSURE DATES FOR 2009

- Sunday, April 12, 2009--Easter
- Monday, May 25, 2009--Memorial Day
- Saturday, July 4, 2009--Fourth of July
- Monday, Sept. 7, 2009--Labor Day
- Thursday, Nov. 26 2009--Thanksgiving
- Friday, Dec. 25, 2009--Christmas



MARK YOUR CALENDARS FOR THE NEXT GFO ALL-NIGHTER

Saturday February 21, 2009
6 pm to 6 am Cost \$15

COME JOIN THE FUN!
Snacks provided
Pizza at Midnight:

Questions?
Email Julie at rathernut@cs.com

NEW LIBRARY BOOKS

- Bennett, William D. *Orange County, North Carolina: Records, Volume VI*. Raleigh, North Carolina, Granville Proprietary Land Office, Deeds and Surveys, 1761-1763. Raleigh, North Carolina, by the author, 1989. 975.6 063
- Orange County, North Carolina, Granville Proprietary Land Office, Deeds and Surveys, Volume V, 1752-1760*. Raleigh, North Carolina, 1989. 975 6 065
- Orange County, North Carolina Records, Volume II: Deed Books 1 and 2*. Raleigh, North Carolina, Abstracted by the Author, 1989. 975.6 063 Land
- Holcomb, Brent H. *Marriages of Rowan County, North Carolina, 1753-1768*. Baltimore, Maryland: Genealogical Publishing company, 1981. 975.6 R877. Virginia Vital Records Marriage
- Kallam, Lemuel. *Wallace Lemuel Cemetery Book of Surry County and Surrounding Areas*, Mt. Airy, North Carolina, 1982, 975.6 S962 Vital Records
- Haun, Weynette Parks, *Wake County, North Carolina County Court Minutes 1771-1784, Book 1*. Durham, North Carolina, 1993. 975.6 W146 Court
- *1787-1792, Book 2*.
- 1793-1796, Book 3*.
- 1797-1800, Book 4*.
- Marriages of Warren and Bute Counties, North Carolina, 1764-1868*. Baltimore, Maryland: Clearfield., 1991. 975.6 W287 Vital Records Marriage.
- Gentry, Lelia Thornton. *Historical Collections of the Georgia Chapters of the Daughters of the American Revolution, Volume 4*. Baltimore, Maryland: Old and Clearfield, 1995. 975.8 A000 Bible
- Hillis, David. *Great Heritage: An Overview of Some of the Families of Burke, Emanuel, Jefferson, Screven and Jenkins Counties*. 1991. 975.8 A000 Biography
- Register, Alvaretta Kenan. *Index to the 1830 Census of Georgia*. Baltimore, Maryland: Genealogical Publishing Company. 1974. 975.8 A000 Census.
- Historical Collections of the Georgia Chapters , Daughters of the American Revolution, Volume I: Seventeen Georgia Counties*. Baltimore, Maryland: Clearfield, 1995. 975.8 A000 Court
- Warren, Mary Bondurant. *Marriage Book A: 1804-1821 Clark County, Georgia. Danielsville, Georgia: Heritage Papers, 1966*. 975.8 C597 Vital Records Marriage
- Houston, Sandra Kelton. *Green County, Tennessee: Guardians and Orphans Court Records 1783-1870 and 1830 Tax List*. Easley, South Carolina: Southern Historical Press, 1984. 975.8 G799 Court
- Smith, Mrs. Hershel W. *Historical Collections of the Georgia Chapters of the Daughters of the American Revolution, Volume 5. Marriage Records*. Baltimore, Maryland: Clearfield, 1955. 975.8 G799 Vital Records Marriage.
- David, Robert Scott, Jr. *Georgians in the Revolution: At Kettle Creek (Wilkes County) and Burke County*. Easley, North Carolina: Southern Historical Press, 1986. 975.8 A000 History
- Pederson, Dianne E. *Fifth Survey District of Tennessee: Grants numbers 1-800, 1807-912, Volume A*. Signal Mountain, Tennessee: Mountain Press, 1990 976.8 A000
- Eddlemon, Sherida K. *Genealogical Abstracts from Tennessee Newspapers, 1791-1808*. Bowie, Maryland: Heritage Books, 1988. 976.8 A000 News
- Hansard, Mary A. *Old Time Tazwell: Mary Lorena Hansard Wilson*. Sweetwater, Tennessee, 1979. 976.8 C585 History
- Hawkins County: History of Tennessee Press*. Signal Mountain, Tennessee, 1990. 976.8 H393 History

NEW LIBRARY BOOKS

W.P.A. *Knox County, Tennessee Estate Book, Volume I: 1792-1811*. Signal Mountain, Tennessee, Mountain Press. 976.8 K74 Court

Willis, Laura. *Montgomery County, Tennessee: Wills and Administrations, Volume One, 1796-1804*. Melber, Kentucky: Simmons Historical Publications, 1995. 976.8 M787 Court

—*Volume Two*.

Whitley, Edythe Rucker. *Overton County, Tennessee Genealogical Records*. Baltimore, Maryland: Genealogical Publishing, 1983. 976.8 096 Court

Marsh, Timothy R. and Helen C. *First Land Grants of Sumner County, Tennessee, 1786-1833*. Easley, South Carolina: Southern Historical Press, 2003. 976.8 5956 Land

Rae, Lorraine. *Washington County, Tennessee Deeds 1775-1800*. Easley, South Carolina: Southern Historical Press, 1991. 976.8 W317 Land

Burgner, Goldene Fillers. *North Carolina Land Grants Recorded in Green County, Tennessee*. Easley, South Carolina: Southern Historical Press, 1981. 976.9 A000 Land

—*Washington County, Tennessee Marriages, 1790-1870*. Easley, South Carolina: Southern Historical Press, 1985. 976.8 W317 Vital Records, Marriage

Perrin, W.H. et al. *Kentucky: A History of the State, Third Edition*. Greenville, South Carolina: Southern Historical Press, 1999. 976.9 A000 Biography

Wilder, Minnie S. *Kentucky Soldiers in the War of 1812 with an Additional Index*. Baltimore, Maryland: Clearfield, 1969. 976.9 A000

Wilson, Samuel M. *Land Warrants for the French, Indian and Revolutionary War*. Greenville, South Carolina: Southern Historical Press, 1994. 976.9 A000 Biography

Madison County, Kentucky Tax Payers 1787-1799. Miami Beach, Florida: TLC Genealogy, 1992. 976.9 M182 Court

Crabb, Anne. *Land Entries for Madison County, Kentucky 1780-1793*. Richmond, Kentucky, 1996. 976.9 M182 Land

Marriage Records for Morgan County, Illinois 1827-1837. Jacksonville, Illinois: Jacksonville Area Genealogical & Historical Society. 977.3 M848 Vital Records Marriage

JANUARY'S MONTHLY PROGRAM

January 10, 2009

Connie Lenzen presented a program on the use of church records in our research. She distinguished primary sources from derivative sources. Primary are those written by a witness to the event and derivative are those that are reports based on the original source. This type is sometimes called second-hand or secondary.

There are many types of church records, including, marriage, baptismal and burial records. There are church journals and "minute books", which may be second-hand accounts of events taking place in a church community over time. There are religious obituaries published by the various denominations as well as registries of communicants where our ancestor's name might appear.

The Daughters of the American Revolution (D.A.R.) charges its state chapters to publish "Blue Books" of old records of events in that state. Tualatin Family History Library has a collection of these D.A.R. books for Oregon.

She suggested using more than surnames in one's search. Try keyword searches using names of known localities where ancestors lived to find churches of denominations relative to the ancestors, and then search the record repositories for that denomination.

Thanks, Connie for the good ideas.

Janis Bailey

BEGINNERS CLASSES CONTINUE

INTRODUCTION TO GENEALOGY CLASSES,
OR JUMP-START YOUR GENEALOGY!
NEXT CLASS IS SATURDAY, FEBRUARY 28,
2009

Classes are 10 a.m. to Noon , the 4th Saturday of every other month except December. People do not have to be members of the Genealogical Forum to attend.

Following the class is a complimentary tour and use of the Library. There is a \$15 fee and preference is given to those who pre-register. Send your checks to GFO, or call ahead to the GFO desk to register and pay the day of the class.

EDITOR'S NOTE

I'm sure you have noticed that there is more than one format used in this issue of the *Insider*. A reader of the electronic *Insider* pointed out to me that the format of "Connie's Corner" is much easier to read online than the articles using a two-column format, which requires scanning down and then back to the top of the next column. Single-column text can be read all the way across the page from top to bottom.

This leads me to a look to the future, when mailing the *Insider* will not be cost effective. Because of rising costs of paper and printing, as well as ever rising bulk mail charges, many organizations have already switched to electronic mail for their newsletters, including genealogical societies, schools, and even daily newspapers.

The dissemination of news is very important to keep members informed about the organization and its activities as well about the latest information in the field.

We are sensitive to the fact that many of GFO members do not use computers and can't get out to their library to setup an Email account and download our newsletters at no charge. We are discussing what the options would be for this group in case this strategy becomes necessary.

Janis Bailey, editor

LOST & FOUND

Have you left a coat at the Forum?
Last call; will send to Goodwill in 30 days!

- (Items are in storage closet near lunchroom)
- 1.) white jacket-Pacific Trail
 - 2.) Navy Blue, 100% wool sweater Lg. Nordstrom-Individualist;
 - 3) Beige Jacket- Gary Player-Lg;
 - 4) Navy Wool Coat, 3/4 length, HarveyBernard;
 - 5) Black Shell, 100% Nylon, 2X, Purewater;
 - 6) Black Jacket, 100% Nylon, M, Cascade Sport.
 - 7)In past week- 1 beautiful, long white Nylon. scarf

Ann Wendlandt & Bettina Chew, Thursday



FEBRUARY OPEN HOUSE

In recognition of the **Oregon State's Sesquicentennial** the Forum will host an Open House on February 14, 2008 from 9:00 A.M. to 3:00 P.M.

See page 2 in this issue of the *Insider*

NOTABLE ANCESTORS

Do you have a notable ancestor, perhaps not famous or infamous, but worthy of note you would like to write about?

If so, send between 150 -250 words about this person to the editor at:
jbailey172@comcast.net or drop off a note at GFO's front desk for *THE INSIDER*. Please include how you can be reached.

MARRIAGE RECORDS, OBITS LOOKUPS

Check the GFO records index online

Request a photocopy of the original record from:

Multnomah County Marriage Records

Years currently available online:
1855 - 1904.

NW Oregon Obituary Index, of area clippings collected by the late Lottie Gurley

is now online! Find your ancestor and request a photocopy of the obit.

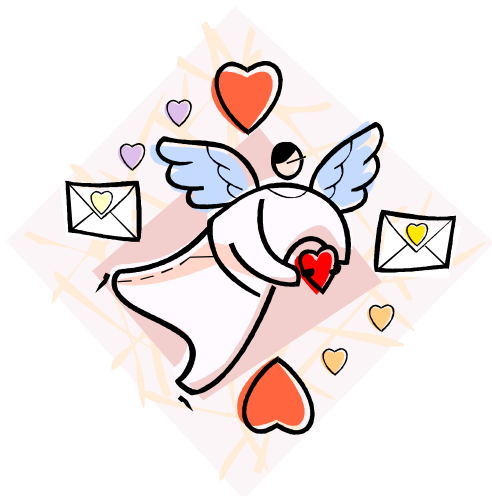
FEES— for a lookup request for each record is \$5. Mail your exact request, with your return address, to:
Genealogical Forum of Oregon
(Mult. Co. Marriage Record Lookup or Obituary)
PO Box 42567
Portland OR 97242-0567

The Forum Insider

Genealogical Forum of Oregon Inc.
1505 SE Gideon Street
PO Box 42567
Portland OR 97242-0567

Address Service Requested

Non-Profit
Organization
US POSTAGE
PAID
Portland Oregon
Permit No. 745



Place label here

THE FORUM INSIDER

GFO Calendar

February 2009

- 2nd **Free Monday** (bring a friend)
10th Tuesday: 5:30 p.m. Board Meeting
14th Saturday: 9:00-3:00 **Open House**
15th Sunday: 1-3 p.m. **Mini-Class. "Just The Facts"**
16th Monday: 7:00 p.m. Computer Interest Group
21st Saturday: 9:30 **TMG SUG** 6:00 p.m. **All Nighter**
23rd 7:00 p.m. **Round Table Discussion**
25th Wednesday: 6:30 p.m. **TMG Forum**
28th Saturday: 10:00 a.m.. **Mini-Class Introduction To Genealogy**
1-3 p.m. **Mini-Class: "Finding Stuff in the Library"**

March 2009

- 3rd **Free Monday** (bring a friend)
10th Tuesday: 1-2:30 p.m. **DNA Grp** 5:30 p.m. **Board Meeting**
14th Saturday: 9:30 a.m. **Illinois IG** 11:45 a.m. **Writers' Forum** 2:00 p.m. **Monthly Program**
16th Monday: 7:00 p.m. **Computer Interest Group**
21st Saturday: 9:30 a.m. **TMG SUG** 1:00 p.m. **Irish Interest Group**
22nd Sunday: 1-3 p.m. **Mini-Class.**
23rd Monday: 7:00 p.m. **Round Table Discussion**
25th Wednesday. : 6:30 p.m. **TMG Forum**
28th Sat: 10-12p.m. **Mini-class**

April, 2009

- 4th Saturday: 1-3 p.m. **Mini-Class**
6th Free Monday (bring a friend)
11th Saturday: 9:30 a.m. **Illinois Interest Group**
11:45 a.m. **Writers' Forum**
2:00 p.m. **Monthly Program**
14th Tuesday: 5:30 p.m. **Board mtg**
18th **LIBRARY CLOSED –Spring Seminar**
20th Monday: 7:00 p.m. **Computer Interest Group**
22nd Wednesday: 6:30 p.m. **TMG Forum**
25th Saturday: 10:00-12:00 **Mini Class "Beginning Genealogy"**
26th Sunday 1:00 p.m.-3:00 p.m. **Mini-Class "Jump The Pond"**