



## Genealogical Forum of Oregon

# Spring Seminar 2014

*The GFO Welcomes*

**Warren Bittner, CG<sup>SM</sup>**

F. Warren Bittner, CG<sup>SM</sup>, is a genealogical researcher and lecturer, with thirty years of research experience. He holds an M.S. in history from Utah State University, and a B.S. in Business from Brigham Young University. His master's thesis looked at the social factors affecting illegitimacy in nineteenth century Bavaria. He is the owner of Ancestors Lost and Found, a small genealogical research firm. For six years he was the German Collection Manager for the Family History Library in Salt Lake City, where he coordinated contracts to microfilm and index records at 102 archives in seven countries and where he planned the German book acquisitions and internet publications. Before that he worked for four years in the extraction unit of the Family History Library, where he was coordinator of third-party indexing projects and where he developed and trained volunteers in Spanish indexing projects. He has also worked as a Reference Consultant at the Family History Library on both the U.S. and International reference counters. He has done research in more than fifty German archives and in more than forty U.S. archives and record repositories.



Saturday

17 May 2014

9 am - 4 pm

Milwaukie Elks

### Topics:

- German Historical Maps and Territories: You Can't Do Research Without Them
- Introduction to German Church Books
- German Marriage Laws and Customs
- Exhausting Research to Find an Impossible Immigrant

### Seminar Features:

- Nationally Known Speaker
- Genealogical Treasures Drawing
- Book Vendor
- GFO Surplus Book Sale

# Genealogical Forum of Oregon Spring 2014 Seminar



*Gerardus Mercator's map of Europe  
(printed in 1596)*

## Event Schedule

8:00 am	Registration opens
9:00 am	Opening remarks
9:15 am	Session 1
10:15 am	Break
10:45 am	Session 2
12:00 pm	Lunch
1:15 pm	Announcements
1:30 pm	Session 3
2:30 pm	Break
3:00 pm	Session 4
4:00 pm	Program ends

## German Historical Maps and Territories: You Can't Do Research Without Them

Learn about the historical boundary changes in Germany and how to find the records for various regions.

## Introduction to German Church Books

Learn the basic layout of Catholic and Protestant Records. See examples of baptismal, marriage, death, and confirmation entries. Learn to recognize the essential information.

## German Marriage Laws and Customs

Learn how German marriage laws changed 1500–1900, about tight marriage restrictions, and about marriage customs.

## Exhausting Research to Find an Impossible Immigrant

See how the how the principle of “Reasonably Exhaustive Research” is used to find a “brick wall” immigrant family despite repeated dead ends and misleading clues.

For information on this class, send email to [info@gfo.org](mailto:info@gfo.org)

## Seminar Site

**Milwaukie Elks  
13121 SE McLoughlin Blvd.  
Milwaukie, Oregon**

Situated on the west side of McLoughlin Blvd., Oregon Hwy 99E, 1/2 mile south of the town of Milwaukie.

Located between SE Park Avenue (traffic light to the north) and the Bomber (restaurant to the south). Look for the Milwaukie Elks Lodge sign.

## Lunch

**No lunch available for those registering after 10 May 2014**

Buffet lunch in the Elks dining room with payment of \$11 includes pot roast, baby red potatoes, and salads. Coffee, hot tea, and cold drinks are included.

## Breaks

Snacks and drinks are included with admission and are available during the breaks.

## Refund Policy

For cancellations received after 10 May 2014, refunds will be made in the amount of the registration fee less a \$10.00 cancellation fee. Lunch fees are non-refundable if canceled after 10 May 2014.

## Warren Bittner Spring Seminar ~ Sign-Up Form ~ 17 May 2014

Members: \_\_\_ \$43 received by 5/10/14 \_\_\_ \$48 received after 5/10/14 \_\_\_ \$53 at the door

Non-Members: \_\_\_ \$48 received by 5/10/14 \_\_\_ \$53 received after 5/10/14 \_\_\_ \$58 at the door

Lunch \_\_\_ \$11 must be received by 5/10/14

Total \$ \_\_\_\_\_  Payment enclosed  Paid online at [PayPal.com](http://PayPal.com) using the email address [payments@gfo.org](mailto:payments@gfo.org)

Name \_\_\_\_\_ Member No. \_\_\_\_\_

Email \_\_\_\_\_ Telephone \_\_\_\_\_

Address \_\_\_\_\_

City \_\_\_\_\_ State \_\_\_\_\_ Zip+4 \_\_\_\_\_

Please make check payable to “Genealogical Forum of Oregon” or “GFO.”

Attn: Half-day Seminar, GFO, 2505 SE 11th Ave, Ste B18, Portland OR 97202-1061

503-963-1932

[www.gfo.org](http://www.gfo.org)

[info@gfo.org](mailto:info@gfo.org)





# The Forum Insider

Newsletter of the Genealogical Forum of Oregon

Volume 25, Number 8

May 2014



## GFO Website Updated

Larry Sullivan, Webmaster

Due to popular demand, the home page of the GFO website has been redesigned. Minor changes have been made elsewhere on the site as well.

Thanks go to LauraDenise White for the pictures that make the new banner and Jay Fraser for expertly resizing them for quick loading. We hope that you like the new format and that it is easier to find what you are looking for.

If you are researching Oregonians who served in World War I, you might find a few newspaper articles of interest. Click on “Links” then click the “Oregon” tab, then skip to “WWI”. Here you will see five links. The first four are new; the article about WWI trivia has been on the site for quite a while.

The first new link is to an article which lists bank employees that were serving in the military. In most cases you can tell what unit the soldier was assigned to, and in all cases you can see which bank the soldier was working for. There are about 60 names here.

The second article covers Fort Stevens where members of the Oregon Coast Artillery were being trained. Assignments of several officers are given as well as promotions of eighteen enlisted men.

The Methodist Church was proud of its members that were serving in the war, so an article was planned about its service flag and honor roll. However the headline was preempted by the story of Morgan, a former slave. There are 52 names on this list.

Next is a link to an article from February 1918 which claims that over 500 members of the Multnomah amateur Athletic Club were serving. The club was quite proud of this patriotism, so a flag was created, and the members were listed in the Oregonian.

The section on Oregon History has a link called “Lang Syne Society.” This organization was created in 1914 by Joseph Kaye Gill. Initially, members

consisted primarily of businessmen who had been around since before 1891. The web page has several newspaper articles describing annual meetings as well as lists of members.

Enjoy, and good luck in your research. ☺

## Pointers



This issue introduces some ‘pointers’ to resources, tools and techniques that can be found in the newsletter.

We receive many of these from members of GFO and if you have any that would be useful, please pass them on to [insider@gfo.org](mailto:insider@gfo.org). Give us some idea of how you have used the resource and how well it worked.

From top to bottom:



**Web links**—Links to websites or other internet resources such as apps, email/communication

**Videos**—either disk or online, such as YouTube educational, historical, films/TV shows



**Audio**—Disk or other media, online recordings: folk music, histories, language learning, etc.



**Books**—Books, journals, newsletters, other reading material

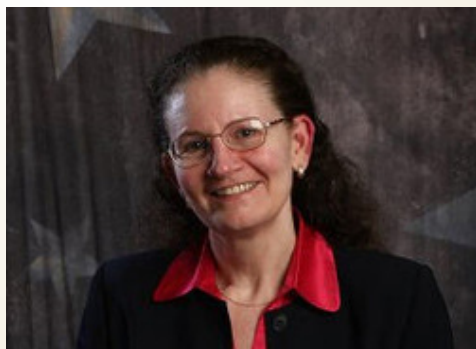
**Graphic**—Graphic or statistical techniques, chart types, maps, other visual displays: Some examples are timelines, pedigree charts, mapping



**Tools**—‘Hardware’ used in genealogy and family history research, such as cameras, GPS, cemetery tools, audio recorders, scanners, and so on



**Software**—Either disk or online, pay or free. ☺



**Genealogical Forum of Oregon**  
**Hot Topics in Genealogy**  
**Half-day Seminar with**  
**Leslie Brinkley Lawson**

**Doing On-site Research**

Have you dreamed of going “there” and doing some on-site research? Many of us have had that dream, and then worked to make it come true! You can too. There are many things you can do while still at home to make this a positive experience. Preparation is everything, as we all have limited resources of time and money! Going on site to do research is one of the most exciting things I get to do! Not everything is on the internet, so expect to find some wonderful treasures doing on-site research.

**Keeper of the Stones**

Online cemeteries are growing every day. We will discuss sites such as Find-A-Grave, Rootsweb, USGenWeb, BillionGraves and more. We will also discuss the apps available for smart phones. Each cemetery database has its strengths; we’ll discuss how to best use each one as effectively as possible.

Leslie Brinkley Lawson, a full-time professional genealogist, specializes in forensic genealogy (missing & unknown heirs, probate research), providing due diligence and kinship determinations. Clients across the nation include attorneys, executors, guardians, banks, probate firms, and private clients.

Leslie’s experience ranges from proving family lines to reuniting family members as well as proving parentage for those unable to speak due to injury or disability [dementia, Alzheimer’s, schizophrenia].

Leslie currently serves as the President of the Council for the Advancement of Forensic Genealogy and President of the Oregon Chapter of the Association of Professional Genealogists. She is a well-known regional and national speaker. Visit her website: <http://www.LawsonResearch.net>.

**Saturday**

**28 June 2014**

**10 a.m.–2 p.m.**

**GFO Library**

Limited to 50 attendees

**No lunch provided**

*Brown bags welcome*

*Cafes nearby*

*Coffee, tea, and snacks included*

The library will be open for research after the seminar.

*Event Schedule*

9:45–10:00 a.m.	Registration
10:00–11:45 a.m.	1st Session
11:45 a.m.–12:30 p.m.	Lunch
12:30–2:00 p.m.	2nd Session

For information on this class, send email to [info@gfo.org](mailto:info@gfo.org)

**Leslie Brinkley Lawson Half-day Seminar ~ Sign-Up Form ~ 28 June 2014**

Members: \_\_\_ \$20 received by 6/21/14    \_\_\_ \$25 received after 6/21/14    \_\_\_ \$30 at the door  
 Non-Members: \_\_\_ \$25 received by 6/21/14    \_\_\_ \$30 received after 6/21/14    \_\_\_ \$35 at the door  
 Total \$\_\_\_\_\_     Payment enclosed     Paid online at [PayPal.com](http://PayPal.com) using the email address payments@gfo.org

Name \_\_\_\_\_ Member No. \_\_\_\_\_

Email \_\_\_\_\_ Telephone \_\_\_\_\_

Address \_\_\_\_\_

City \_\_\_\_\_ State \_\_\_\_\_ Zip+4 \_\_\_\_\_

Please make check payable to “Genealogical Forum of Oregon” or “GFO.”  
 Attn: Half-day Seminar, GFO, 2505 SE 11th Ave, Ste B18, Portland OR 97202-1061  
 503-963-1932    <http://www.gfo.org>    [info@gfo.org](mailto:info@gfo.org)





## Genealogical Forum of Oregon

[www.gfo.org](http://www.gfo.org)

2505 SE 11th Ave., Suite B18  
Portland, OR 97202-1061  
(Corner of 11th & Division)  
503-963-1932

[info@gfo.org](mailto:info@gfo.org)

### Free Monthly Program

Third Saturday of each month at  
2 p.m. with an interesting speaker.

### Library Hours

Monday, Tuesday, and Thursday  
9:30 a.m. to 5 p.m.

Wednesday  
9:30 to 8 p.m.

Friday and Saturday  
9:30 a.m. to 3 p.m.

Sunday  
12 noon to 5 p.m.

### Contents

Spring Seminar .....	Flyer
GFO Website & Pointers .....	1
Half-day Seminar .....	2
Contents .....	3
Events/Classes .....	3
GFO Library Books .....	4
National Archives News.....	4
Rooting Around .....	5
La Bretagne .....	5
GFO Star .....	6
Financial Report .....	6
Raffle Prize Ideas .....	6
Volunteer Opportunities .....	7
Cousinship 'Ladder'.....	8
GFO Board Activities .....	8
Special Interest Groups .....	9
GFO Calendar .....	10

Submissions to the *Insider*: Send comments, corrections, news, short success stories, and announcements to Jackie Olson, editor, at [insider@gfo.org](mailto:insider@gfo.org) or leave messages at the GFO desk, 503-963-1932. Provide submissions by the 7th of the month for inclusion in the following month's issue.

*The Forum Insider* (ISSN 1051-5666) is the newsletter of the Genealogical Forum of Oregon Inc., 2505 SE 11th Ave., Suite B-18, Portland, OR 97202-1061. The Forum is a membership organization devoted to genealogical research, preservation, and education. The GFO publications promote the field of genealogy for the professional and the hobbyist. Dues are \$40 per year for individual memberships and \$55 for joint memberships. Membership includes subscriptions to the *Bulletin* (March, June, September, and December) and *The Forum Insider* (January, February, April, May, July, August, October, and November). Material from *The Forum Insider* may be reproduced provided credit is given to the publication, the author of the article, and the Genealogical Forum of Oregon. *The Forum Insider* staff includes Jackie Olson, Editor, Loretta Welsh, Publisher, and Jim Morrow, Assistant to the Publisher. Many thanks to everyone including our proofreaders, Susan LeBlanc, Laurel Smith, and Ellie Dir.

## Spring Seminar

### German Research

— *F. Warren Bittner, CG<sup>SM</sup>*

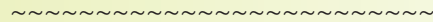
Saturday, May 17, 2014

9 a.m.–4 p.m.

Milwaukie Elks

See flyer at:

<http://www.gfo.org/seminar/warren-bittner.pdf>



### Monthly Program

Program is held at the GFO Library and is free and open to the public. Details at:

[http://www.gfo.org/month\\_meet.htm](http://www.gfo.org/month_meet.htm)

### Tablets and Smart Phones for Genealogists: Laptop Replacements?

— *Peggy Baldwin*

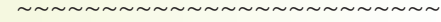
Saturday, June 21, 2014

2–4 p.m.

Use these devices for genealogy – accessing the web and email, taking notes, accessing your documents, reading publications, taking photographs, and educating yourself. Learn about the different kinds of tablets and smartphones, and accessories like cases and keyboards. Hey, maybe you can even leave your

laptop behind!

Peggy Baldwin is a professional genealogist, serving clients through her business Family Passages LLC since 2005. Peggy has been involved in technology since before the advent of PCs, continually exploring the newest technologies. She loves her iPad and her iPhone and is excited about sharing what she has learned about the value of tablets and smartphones for genealogists.



### Half-day Seminar

*Doing On-site Research and Keeper of the Stones*

— *Leslie Brinkley Lawson*

Saturday, June 28

See the attached flyer.



### Membership Dues Change

Dues will increase by \$1 per member, per year, on July 1, 2014. Joint memberships will go up by \$2. Dues can be paid at the current rate for one or two years. For current rates and an application go to <http://www.gfo.org/membership/form701.pdf> or visit the GFO library. You can renew at any time during the year and do not need to wait for the renewal notice.

GFO membership fees are 100% tax deductible in keeping with our 501(c)(3) nonprofit education status. Make a matching donation to the Oregon Cultural Trust and you may also be eligible for an Oregon tax credit.

[www.culturaltrust.org](http://www.culturaltrust.org).



## Is the GFO Liquidating Library Books?

*Helen Smith*

During the Open House, people kept asking, “Are you selling off all the library books?” While this is the direction some genealogical research facilities are going, we hope you’ll be glad to hear we are not selling our library books.

The Forum is fortunate to have many generous book donors. That’s one of the ways our library has grown over time. Frequently, donated books are duplicates of books we have. This creates surplus items we can sell, and this is a valuable source of income to the Forum.

When books or similar items are donated, the donation is recorded and an acknowledgment is sent to the donor. The donor can then use this as documentation for tax purposes.

Then the evaluation process begins. Each donated item is checked carefully against our library holdings. If this donated item is a match to one in the library, it is physically compared, side-by-side with the one in the library. Is it a newer edition? Is the content or condition better than the one we have? If not, it becomes a surplus book the GFO can sell.

What if it is better than the one we have? Then the new item is sent to the cataloging team to be processed and added to the collection, and the item to be replaced is ‘deaccessioned’ and given to the book sales team.

So what happens when the GFO gets an item that is not a duplicate of something in the collection? All those items are routed to the library committee for evaluation. There is a Collection Development Policy which may be viewed at <http://www.gfo.org/board/donate-policy.pdf>. These are the guidelines the committee uses to determine whether a book is a ‘good fit’ for our library. At least two members, often three, evaluate each candidate. When an item is deemed a poor fit, it is passed on to the book sales team to be sold as surplus.

Occasionally, current library items are ‘deaccessioned’ from our library and sold as surplus. This may occur when we have duplicate copies, as space on our shelves gets tighter and tighter. It may also happen when an item is so out of date as to have little value. This is most likely to happen with what we call ‘How To’ books, especially those dealing with the internet or technology.

Once an item reaches the sales team, a price is set with the goal being that our price is about 20% lower than the lowest price we can find online. Members who buy books in the library save an additional 10% off the marked price. We copy the title pages to use for tracking



*Some of the great bargains at February’s Open House.*

or inventory, enter the items on our book sale list, and place them on the shelf where, hopefully, members or visitors will grab up these great bargains faster than we can get them out.

Please remember, book donations are the lifeblood of the library, whether as new resources for all to appreciate, or as surplus books which generate income to keep the GFO going strong. ☺

---

### Book Reviewers Needed

Care to share your writing skills by providing book reviews for our publications and library catalog? The GFO is looking for people to write reviews of some donated books and other books of interest. Reviews are published in the *Bulletin* and in the new GFO library catalog. Contact Joan Galles at [afftravel@aol.com](mailto:afftravel@aol.com) if you are interested. ☺

---

### Closure/Consolidations of Three National Archives Facilities

The National Archives facility in Anchorage, Alaska, will close and two facilities in the Philadelphia, Pennsylvania, area will be consolidated to a single site. Within the next two years, two Archives’ facilities in Fort Worth, Texas, also will be consolidated to a single site.

National Archives announcement [here](#).

Anchorage Daily News article [here](#).



## Rooting Around

April Ober

*Sometimes in family history research we come upon amazing coincidences. Here is one recent story from a GFO research assistant.*

On DNA Monday, a couple from Clark County asked for a bit of help finding information on the woman’s Hankins relatives in Oregon.

With a Multnomah County Library card we tried to access the *Oregonian* online. Unfortunately it was a holiday, the library was closed and offline while they did computer maintenance.

I told them about University of Oregon Library’s digital newspapers, found the site, and we did a little bit of work from there. I emailed the site to her so she could use it too.

As we worked down the second page of her list, one of the names jumped out at me: Beulah E. Hankins Slingerland, Lake Oswego. I asked if Beulah was married to George Slingerland. “Yes, I think so,” she said. I told her that Beulah, known as “Junior” to me, and George were best friends of my parents. She looked at me with questions in her eyes. “Really? Was she from Iowa? Was her maiden name Hankins?” I didn’t know, but we went to work.

George worked with my parents at Portland Terminal Railroad, probably for more than 30 years. He was train-master at Union Station here in Portland. George and Junior traveled a couple times a year with my folks, often to Reno or Las Vegas. I knew they didn’t have any children but had been dog owners for years.

I used FamilySearch and found him in the Social Security Death Index with Railroad Board in place of an issuing state. Then I used the Snipping Tool to extract a couple of screen prints and emailed them to our guest while she was sitting in the library. When I came in the following Thursday for a volunteer shift I went into the library site and found Beulah’s obituary in the *Oregonian* and emailed it. My family is looking for photos, but haven’t found any.

She asked why Beulah was called Junior. I didn’t know, but they were always George and Junior to my family. It was more puzzling when we found that George was George T. Slingerland Jr. ☪



## La Britannia or La Bretagne

Joan Galles

Sounds the same. Most of us in this part of the world think in English and thus I have spent years looking for some information about the *Britannia*, which was a British ship. Why couldn’t I find my family from Italy on that ship?

On a border crossing paper from 1910, coming to the United States to Canada, it says my great-grandfather sailed on the *Britannia*. Searching for the ship’s name again, I came across *Le Bretagne*, a French ship. Investigation at the Ellis Island web site revealed that it sailed regularly from 1900–1912. I quickly looked up several different years and found my great-grandfather, Domenico D’attilio, (spelled Dominic Datillio in the ship registry), arriving on 18 April 1904.

My great-grandmother, Maria Giovanna, my grandmother, Maria Gerolma, and my great-aunt, Pauline, and great-uncle, Antonio, were then found on the Ellis Island site on the *La Lorraine* under the name Dattelio. My great-aunt Pauline was listed as 2 1/2 years. She should have been five years of age on 4 February 1905 when the ship landed. She was small for her age.

On their border crossing papers it said that they had come over on the *La Lorraine*. I knew they had lived in Marseilles and so departing from Le Havre was quite natural.

With all the misspellings and/or phonetic spellings, sliding dates, and guessing ages, it has taken quite a number of years to piece this together. The clue was *Le Bretagne* and that opened everything up. ☪



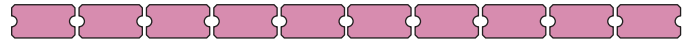
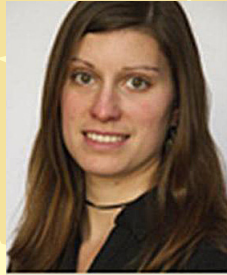
*S.S. La Bretagne, between 1900–12 (Detroit Publishing Company.) From Library of Congress.*



**GFO Star  
LauraDenise White**

LauraDenise is a dependable and positive research assistant who assists patrons but also does the mundane tasks.

She is integral to the manuscript committee, developing a professional website, finding aids, tracking system, etc. and going to workshops to learn more. She also volunteers on the library committee, all while holding down a full-time job.



**On the Hook for a Raffle Prize?**

*Jan Asher*

How many times have you been asked to donate something to a charitable organization for a fund raising event? Here's a great idea from one of our members: Why not offer a visit or a membership to the GFO?

- A few hours of research time at the GFO with their own research assistant (you.) This could be for 1 or more people.
- Lunch (or breakfast) followed by a research trip to the GFO (as above).
- A one year membership to the GFO.

I just donated an afternoon at GFO for two people with my personal research assistance, including a tour of the library, to another organization where I also volunteer: Feral Cat Coalition of Oregon's annual fund raiser. They really liked the idea and think it will be a popular raffle item.

The GFO has some simple certificates you can use if you like.

For larger groups, you may want to take advantage of the free tours the GFO offers. You may read about them on our website at <http://www.gfo.org/library/visitor-info.htm> or contact [tours@gfo.org](mailto:tours@gfo.org) for more information.



**Financial Report - January 2014**

*Richard Crockett, Treasurer*

March income totaled \$2556.94. Donations were \$274.00, investment funds accounted for \$261.46, there was \$1006.00 from memberships, \$205.00 for the Spring Seminar, \$337.49 from the Reading Room and \$473.00 from sales (publications, research, used books).

Total expenses were \$6128.98. Besides the usual monthly expense, the Fold3 subscription was renewed for the year (\$395.00), Acrobat was purchased for the manuscript committee (\$119.00), and two laptops were purchased to replace two of the oldest, problematic desktop computers (\$719.98). Net loss for the month was \$3572.04, and the net loss for the fiscal year stands at \$592.36.



*Sample certificate that can be adapted as needed.*

**Preservation of Materials  
Topics at the National Archives**



<http://www.archives.gov/preservation/>

The National Archives and Records Administration (NARA) has a series of pages on preservation of everything from papers to photos to movie film. There are sections on preservation methods for the personal and institutional levels. Topics include:

- What Do You Want To Preserve?
- NARA Preservation Strategies
- Events and Special Projects

**REMEMBER TO VOTE**

**There's still time**

Attached to last month's newsletter is a ballot for election of officers. Your vote is important. Please fill in your ballot and mail it or drop it off at the GFO by May 12, 2014.





## Volunteer Opportunities

The GFO runs on volunteer power. Large and small jobs, all hours, we can use your help. What can you bring?

### ☞ *Membership Chair*

This crucial role focuses on member recruitment and retention. A committee is in place to process memberships and mailings, and a volunteer to do data entry is being sought. Contact Laurel Smith at [president@gfo.org](mailto:president@gfo.org).

### ☞ *Endowment Committee*

The committee that manages the GFO Endowment Fund is seeking one new member for a one-year term. The committee meets only four times a year. Whether your background or interests lie in investing or fundraising, or you just want to help, contact Laurel Smith at [president@gfo.org](mailto:president@gfo.org).

### ☞ *Writer for the In Memoriam column*

We are looking for someone to submit short obituaries of GFO members to our *Bulletin* editor to be included in the “In Memoriam” column. The information is supplied by other sources and/or persons. Your responsibility is to write a paragraph about the deceased member. The *Bulletin* is published quarterly. Please contact the editor at [Bulletin@gfo.org](mailto:Bulletin@gfo.org).

### ☞ *Data entry*

Need detail-oriented person with data entry experience to help 1–3 hours a week processing membership applications. Please contact Marj Enneking at [membership@gfo.org](mailto:membership@gfo.org).

### ☞ *Book sales - many volunteers*

This is an ongoing project, once a week or once a month, but day and time are up to you and may fluctuate. Training is provided, and procedural “cheat sheets” are available. Once trained, volunteers may work independently on their own schedule. Basic computer skills are all that is needed. Contact Helen Smith ([book\\_sales@gfo.org](mailto:book_sales@gfo.org) or 503-963-1932).

### ☞ *Manuscripts*

Organize, create finding aids, and scan personal papers and manuscripts donated over the years, to make these collections available to researchers. Once trained, volunteers can work independently to process an entire collection or choose one step, such as organizing or scanning. Contact Nanci Remington at [manuscripts@gfo.org](mailto:manuscripts@gfo.org).

### ☞ *Print shop*

An additional person for backup in the print shop to help print brochures, letters, the *Bulletin*, the *Insider*, etc., when Loretta Welsh and Jim Morrow are not available. Contact Loretta at [publisher@gfo.org](mailto:publisher@gfo.org).

### ☞ *Research Assistants/Receptionists*

Volunteers are needed to fill these critical spots to keep

the library open. Some are experienced researchers, some do reception work, some fill both roles. We must have at least two volunteers on duty (minimum—one researcher and one receptionist) for each shift. Options can be one shift per week, every other week, or per month. Shifts are 9:30 a.m.–1:00 p.m. or 1:00–5:00 p.m.. Contact Cathy Lauer at [volunteer@gfo.org](mailto:volunteer@gfo.org).

### ☞ *Research requests - additional volunteer*

- Help fulfill research requests. This is an important source of income for the GFO. Most requests come from people viewing our online indexes, and from those requesting copies of pages from the books in our collection.
- A backup person is needed to scan microfilms of the Donation Land Claims and print, email, or create a CD from the scans. Training provided.

Please contact Loretta Welsh at [research@gfo.org](mailto:research@gfo.org).

### ☞ *Book cataloging*

Enter newly donated and already classified books into the new catalog to reduce our huge backlog. We can’t share them with our membership until they’re in the catalog. We will train you. The perk is being first to see the interesting books coming into the library. You can set your own hours; as little or as much time as you are able to give is a wonderful contribution to the library. Use either the computer in the work room, or we can set up your laptop so you can work anywhere in the library. Contact Sarah Holmes: [cataloging@gfo.org](mailto:cataloging@gfo.org).

### ☞ *Data extraction*

If you would like to help with data extraction projects, please contact Loretta Welsh. She is usually at the library on Wednesdays, or leave a message with reception at 503-963-1932 or email [dataextraction@gfo.org](mailto:dataextraction@gfo.org).

#### 1. *Historic Columbian Cemetery extraction project*

The GFO has been working on the records of the Historic Columbian Cemetery. Proofreaders are needed for the extracted records.

#### 2. *Ongoing data extraction projects*

A number of projects can use help. These require use of Excel or Open Office for the worksheets.

- Work at the GFO on Multnomah County Marriages, books of newspaper clippings, and books of Oregon biographies.
- Work at home from scanned images of Portland birth ledgers, scrapbooks, obituaries, church cards, or newspaper clippings.

#### 3. *Scanning*

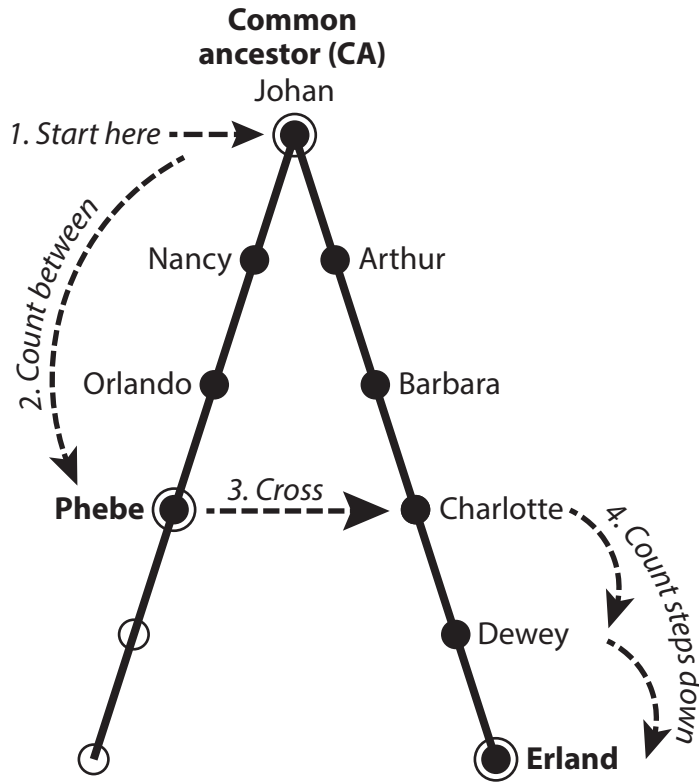
We have boxes of items that must be scanned so our volunteers at home can do the data extraction. Scanning is easy and training is provided. ☞



## Cousinship 'Ladder'

Jackie Olson

When you need to describe a cousin relationship for two people, you can read a table of relations—or use this simple graphic method. It needs only paper and pencil and is easy enough for children to follow. Try it at your next family reunion.



Phebe and Erland are each descendants of a common ancestor, Johan, on different lines. To determine their cousin relationship, begin by listing the pedigree line for each back to this common ancestor (CA). Then draw a ladder. On each side list the descendants of one family line with the CA on the top, and each following generation on the rungs beneath. Ignore any generations after the two relatives you're studying.

Begin with the shortest of the two family lines, in this case Phebe's. Count the number of rungs BETWEEN Phebe and the CA. That's two here: Nancy and Orlando. Don't count the persons at the ends (Phebe and the CA). Two rungs between means they're second cousins. Three rungs would be third cousins, and so on.

On the other leg of the ladder, start at the same level as the person on the first leg: here, that's Charlotte. This time count the rungs down to the other person as steps. Dewey is one step down, he's one generation removed from Charlotte. Erland is two steps. This relationship is called twice removed, or two generations removed. Four steps down would be four times removed.

Phebe and Erland are second cousins, twice removed. ∞

## Selected GFO Board Activities in 1st Quarter, 2014

- Reviewed and approved a revised special interest group policy.
- Conducted a member survey, tabulated, and reviewed the responses.
- Began a recognition program (GFO Star) to honor those making outstanding contributions.
- Planned and carried out an open house and book sale which was deemed a success.
- Established a new committee: the Bulletin Editorial Group to advise and assist the publication's editor. Anyone interested in joining this group should send a message to [bulletin@gfo.org](mailto:bulletin@gfo.org).
- Approved a policy requiring GFO membership of those who wish to list their genealogical services on our website.
- Approved plans for upcoming seminars and the budget for the spring seminar.
- Purchased two new laptop computers to replace two of the aging computers in the reading room.
- Agreed to have an information table at the upcoming GCO Conference. Volunteers to man the table are being sought.
- Prepared and filed tax returns for the 2012-13 fiscal year. ∞



**Interest Group Meeting Times and Contacts**

All meetings at GFO Library

**British Group**

May 24, 1–3 p.m.

Presentation Topic to be announced. We'll share "Snacks of Our Ancestors", or what we know or think our ancestors might have enjoyed. If in doubt, visit the Scottish Country Shop, which has been moved back to the original location near SE 36th & Powell Blvd in Portland. They feature food and snacks from the British Isles as well as other fun souvenirs. Questions: Contact Lyleth Winther at [lylethw@gmail.com](mailto:lylethw@gmail.com)

**Family Tree Maker Group**

May 18, 1–3 p.m.

Searching the web and merging the information with FTM. Using the Web Search panel, adding additional web sites (personal favorites) and merging the found information into FTM.

June 22, 1–3 p.m.

Linda Morgan: Sources and Citations

July and August: no meetings

**Genealogy Book Group**

May 10, 11:45 a.m.–12:45 p.m.

The group will be reading:

**Skookum: An Oregon Pioneer Family's History and Lore**, by Shannon Applegate.

July 12, 11:45 a.m.–12:45 p.m.

**Unwise Passions: A True Story of a Remarkable Woman - and the First Great Scandal of Eighteenth-Century America**, by Russell Shorto

**German Group**

May 3, 1–3 p.m.

June 7, 1–3 p.m.

**Illinois Group**

May 10, 9:30 a.m.–11:30 p.m.

**Irish Group**

There will be no meeting on Saturday, May 17th due to GFO's Spring seminar, which is taking place on the same day. GFO's library will be closed that day.

**Virginia Interest Group**

May 3, 10 a.m.

June 7, 10 a.m.

**Writers' Forum**

May 10, 1–3 p.m.

**British**

4th Saturdays of Sept, Jan, Mar, May; 1–3 p.m.

Lyleth Winther  
[lylethw@gmail.com](mailto:lylethw@gmail.com)

**Computer**

3rd Saturdays of Feb, Apr, June, Aug, Oct; 10 a.m.–12 p.m.

Daphne Garrison  
[degarrison@gmail.com](mailto:degarrison@gmail.com)

**DNA**

4th Saturdays of Jan, Apr, July, Oct; 10 a.m.–12 p.m.

Emily Aulicino  
[aulicino@hevanet.com](mailto:aulicino@hevanet.com)

**Family Tree Maker**

3rd Sundays except Dec; 1–3 p.m.  
Laurel Smith  
[bearpair@comcast.net](mailto:bearpair@comcast.net)

Stephen Morgan  
[ceanothus1@comcast.net](mailto:ceanothus1@comcast.net)

**Genealogy Books**

2nd Saturdays monthly;  
11:45 a.m.–12:45 p.m.

Bonnie Randolph  
[bbrandolph@clear.net](mailto:bbrandolph@clear.net)

**German**

1st Saturdays monthly;  
Sept–June; 1–3 p.m.

Nanci Remington  
[nancicr@comcast.net](mailto:nancicr@comcast.net)

**Illinois and Its Neighbors**

2nd Saturdays of Jan–May, Sept–Nov; 9:30–11:30 a.m.

Kristy Gravlin  
[hannah@teleport.com](mailto:hannah@teleport.com)  
Harlene Patterson  
[harlene5@yahoo.com](mailto:harlene5@yahoo.com)

**Irish**

3rd Saturdays of Jan, Mar, May, July, Sept, Nov; 12–2 p.m.

Suzanne Lemon  
[slemon46@yahoo.com](mailto:slemon46@yahoo.com)

**Virginia**

1st Saturdays monthly,  
Sept–June; 10 a.m.–12 p.m.

Judi Scott  
[judiscot@gmail.com](mailto:judiscot@gmail.com)  
Carol Surrency  
[lcsurr@gmail.com](mailto:lcsurr@gmail.com)

**Writers' Forum**

2nd Saturdays monthly  
Sept–May; 1–3 p.m.  
Peggy Baldwin  
[peggy@familypassages.com](mailto:peggy@familypassages.com)  
Carol Surrency  
[lcsurr@gmail.com](mailto:lcsurr@gmail.com)

*The Forum Insider*  
 Genealogical Forum of Oregon  
 2505 SE 11th Ave., Suite B-18  
 Portland, OR 97202-1061

ADDRESS SERVICE REQUESTED

Non-Profit Organization US POSTAGE PAID Portland Oregon Permit No. 745
---



**May 2014**

**GFO Calendar**

**May**

Sat 5/3	10 a.m. 1 p.m.	Virginia Group German Group
Mon 5/5		<b>Free to non-Members</b>
Sat 5/10	9.30 a.m. 11:45 a.m. 1 p.m.	Illinois Group Genealogy Book Group Writers' Forum
Sun 5/11		<b>Mother's Day—Library Closed</b>
Tues 5/13	6:10 p.m.	Board meeting
Sat 5/17	9 a.m.–4 p.m.	<b>Spring Seminar: Warren Bittner</b> <i>—Focus on German Research</i> <b>Library closed</b>
Sun 5/18	1 p.m.	Family Tree Maker Group
Sat 5/24	1 p.m.	British Group
Mon 5/26		<b>Memorial Day holiday—Library Closed</b>

**June**

Mon 6/2		<b>Free to non-Members</b>
Sat 6/7	10 a.m. 1 p.m.	Virginia Group German Group
Tues 6/10	6:10 p.m.	Board meeting
Sun 6/15		<b>Father's Day—Library Closed</b>

Sat 6/21	2 p.m.
----------	--------

**Monthly Program: Volunteer Appreciation and Peggy Baldwin—Tablets and Smart Phones for Genealogists: Laptop Replacements?**

Sat 6/28	12 p.m.
----------	---------

**Half-day Seminar: Leslie Lawson—On-site research, online cemeteries, more**

**July**

Fri 6/4
---------

**Fourth of July holiday—Library closed**

Mon 6/7
---------

**Free to non-Members**

Sat 6/19	12 p.m.
----------	---------

Irish Group

Sat 6/26	10 a.m. 1 p.m.
----------	-------------------

DNA Group  
British Group

---

Are you planning to attend the Genealogical Council of Oregon (GCO) Conference in Eugene on August 2, 2014? The GFO will have a table reserved to advertise our organization and we need to have people who can help for an hour or two during the day. If you can help, contact Cathy Lauer, [volunteer@gfo.org](mailto:volunteer@gfo.org).