



# The Forum Insider

Newsletter of the Genealogical Forum of Oregon

Volume 31, Number 4

November 2019

## Share Your Knowledge at GFO's 2020 Open House

Have you learned some nifty genealogy research tricks? Discovered some records that often go overlooked? Are you a mini-expert in a particular location? We'd love to have you share your lessons.

GFO's 2020 Open House will run March 13th–22th next spring, and we're looking for speakers!

If you've given a presentation elsewhere or have given one at GFO before, we'd be happy to feature you and your presentation again.

Our annual Open House aims to educate beginners. It's our annual drive to bring in new members. What better way to begin than to show them what a friendly community we are? Sharing is part of our key mission.

Can you help us? Please contact Vice President Marti Dell at [vicepresident@gfo.org](mailto:vicepresident@gfo.org).

## GFO's October Star Cathy Lauer

Anyone who visits the GFO library is likely to see Cathy Lauer's friendly face and welcoming smile, as Cathy works our front desk more than anyone else.

Cathy managed the schedule of Research Assistants for a decade! That's longer than most of us have been volunteering. She works on vital library projects when things are slow, and she rarely misses a Sunday Work Party.

We can't think of anyone more deserving of Star status! Thank you, Cathy!



## Support GFO with Your Holiday Shopping this Season!

The holidays are fast approaching, and you can help support GFO through your Amazon and Fred Meyer purchases in two exciting ways!

While bargain hunting on Amazon this year, be sure to begin each of your gift searches at [smile.amazon.com](https://smile.amazon.com). Link your existing Amazon account at [smile.amazon.com](https://smile.amazon.com) and select "Accounts & Lists" (toward the top right of the screen) and click on "Your Amazon Smile." The link will open a page where you can enter your favorite organization. We're listed as "Genealogical Forum of Oregon Inc."



AmazonSmile will remember the organization you select and will begin applying donations of 0.5 percent of your purchase price to GFO the very next time you shop.



If you shop at Fred Meyer, you can link your Rewards Card number to GFO and automatically generate a donation from Fred Meyer to GFO each time you shop.

Linking your Fred Meyer Rewards Card to GFO at <https://bit.ly/2vkkAQd> does not diminish or take away from any points or Reward rebate checks you would otherwise receive. GFO receives automatic donations through Fred Meyer's Community Rewards, which is the corporation's separate donation program.





## The Forum Insider

Newsletter of the Genealogical Forum of Oregon

[gfo.org](http://gfo.org) | [info@gfo.org](mailto:info@gfo.org)

2505 SE 11th Ave., Suite B18 Portland, OR  
97202-1061  
503-963-1932

### Library Hours

Mon, Tues, & Thurs..... 9:30 a.m.–5 p.m.  
Wednesday..... 9:30 a.m.–8 p.m.  
Friday & Saturday..... 9:30 a.m.–3 p.m.  
Sunday..... 12 noon–5 p.m.

### Contents

Share at GFO's 2020 Open House.....	1
GFO's October 2019 Star.....	1
Support GFO at the Holidays.....	1
Photos as Cousin Bait.....	2-3
While Lying in a Hospital Bed.....	3-4
David Rumsey's Maps.....	4
Scanning & Archiving GenTalk.....	Flyer
Daylight Savings Time.....	5
Online Databases at GFO.....	5
APG's Oregon Chapter.....	5
Exciting GFO Library News.....	6
BGS's Spring Seminar.....	7
First Families of Multnomah.....	7
GFO New Books.....	8
Treasurer's Report.....	9
PMUG College.....	9
Special Interest Groups.....	9
GFO's 2020 Spring Seminar.....	Flyer
Calendar.....	Back cover

Submissions to *The Forum Insider*: Please send comments, corrections, news, short success stories, and announcements to LauraDenise White and Ruth Summers, editors, at [insider@gfo.org](mailto:insider@gfo.org), or leave messages at the GFO desk, 503-963-1932. Please provide submissions two months ahead of time for inclusion in the next publication's issue.

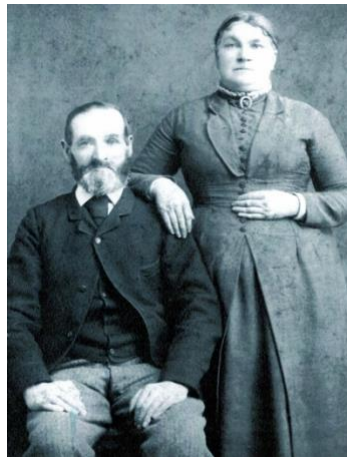
## Photos Make the Perfect Cousin Bait

Vince Patton

"Find the cousins," I heard in one of my first genealogy classes. Well, sure, I knew my aunt's daughters. They're great women, and we've shared family stories and pictures over the years.

Not what the instructor meant it turns out. *Distant* cousins, ones I'd never heard of, let alone met, have become incredibly valuable to my research.

Finding them wasn't as difficult as I feared. And I did find a rather reliable lure to attach to my genealogical fishing hook: photos. The key is to be open to sharing.



(I keep privacy in mind; the photos I share are from people no longer alive, usually by a couple of generations.)

For instance, I found several of my great-grandparents listed on Find A Grave ([www.findagrave.com](http://www.findagrave.com)), but with photos of only their gravestones. I opened an account and then shared handsome portrait photos of several of them, including my great-grandfather Harry Lee Patton and his wife Lilian. A different, fuzzy photo of Harry Lee had been posted to Find A Grave, so I sent a message to the contributor.

Voilà! Betsy replied immediately. Harry Lee's father, William F. Patton, was her direct ancestor too. It turned out her fuzzy photo was cropped out of a larger one from when William F. took the family west to Wyoming, possibly to homestead.

Wyoming? I thought the Pattons were from Arkansas. Then, I remembered a letter from the 1970s in my uncle's genealogy files that mentioned the Pattons going to Wyoming temporarily in the 1880s. The letter was from Betsy's grandfather. Small world.

This pieced together a new chapter to the family's journey, complete with the marvelous photo Betsy shared of the Patton men posing with some others in front of a Wyoming dug out. We have since shared more photos, including several which I happened to have of Betsy's grandfather. *[continued on page 3]*







[Photos Make the Perfect Cousin Bait, continued...]

A couple of years ago, when I dug into my mother's family line, I noticed a photo, on both Ancestry.com and Find A Grave, of my great-great-grandparents. How could this be? Neither my mother, her sister, nor any of my known cousins had ever seen a photo of these immigrants who came from Ireland in about 1850. Yet here were Terence and Bridget Cullen looking at me from the past.

Another quick message to the poster, accompanied by an offer of my photos, connected me to yet another distant cousin. Therese and I shared the same great-great-grandparents, Terence and Bridget, who ended up in Iowa. I never dreamed I'd be able to look into the eyes of my ancestors from so many generations back.

We're trading loads of research now. But photos grab people. They're a great way to get your foot in the door, as long as you're willing to share.

## While Lying in a Hospital Bed

Darrell Gulstrom

On 9 September 2019, I was lying in bed at the Portland Veterans Affairs (VA) hospital. I was dealing with some medical issues that won't be discussed here. I was on my iPad working on some Ancestry stuff. I noticed a new second-cousin showed up on my DNA matches. We shared 258 centimorgans and 13 segments.

I thought I knew all my close cousins—between myself and other cousins a lot of research has been done—so this was a head scratcher. As she had no tree, I had no idea how we connected. So, I sent her a message. Lisa replied and told me that she had been adopted.<sup>1</sup> I definitely did not expect that!

Lisa was born in Jacksonville, Florida. She had a half-sister who was 13 months older. The doctor who delivered them arranged both adoptions to a couple in another state. They are very grateful to have been kept together. The only thing Lisa knew about their mother is that her name was Judy, and she worked at a bank in Jacksonville. She knew nothing of her father and suspected he probably didn't know anything about her.

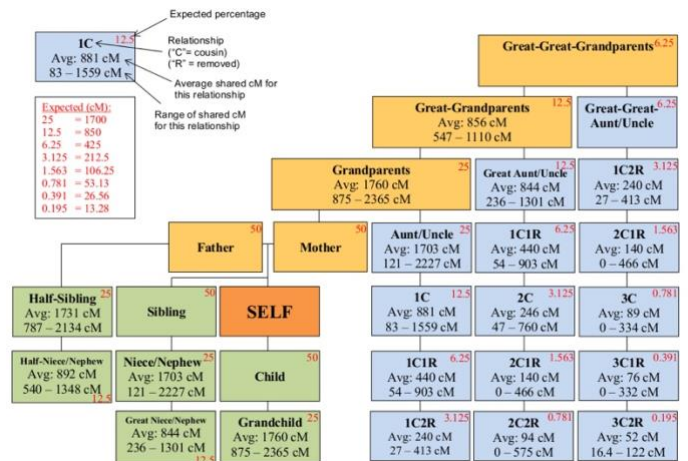
I told her that I had done some adoption research and had been successful connecting adoptees with their biological parents and/or families. I went home from the

hospital on Tuesday. That evening I started going through my mom and dad's first cousins to see if any could be Lisa's father. Dad had 52 first cousins and mom had 35. Through the process of elimination, I first narrowed it down to one great-uncle. He was on my dad's side of the family. Even though he fit the criteria, I knew, personally, it could not be him.

On Wednesday, my cousin told me that she had a Frank and Evelyn on her DNA match list. A cosmic light bulb went off in my head. I knew exactly what family she was part of. Frank matched Lisa with 1891 centimorgans and 63 segments while Evelyn matched with 1716 centimorgans with 56 segments. These were Lisa's uncle and aunt. And, of course, my mom's first cousins. Their mother, Betty, was a younger sister to my grandmother.

My cousins on my mom's side grew up in a small town in Virginia. I grew up in Oregon and didn't know this side of the family. Evelyn was the only cousin there that I had a connection with, and that was only over the phone. I knew that she would be open to helping solve this family history mystery. So, on Friday, 13 September 2019, just four days after finding out about Lisa, I gave Evelyn a call. She was ecstatic!

Evelyn knew right away that her brother Ken was Lisa's father. Evelyn had two younger siblings, but they would have been under 15 when Lisa was born. Ken was in the Navy, stationed in the Jacksonville area, and was



Blaine T. Bettinger - CC 4.0 Attribution License (2015)

a wild guy who bragged about his exploits with a different woman on the beach every night. Apparently, Lisa's mother was one of these women.

In talking with another cousin, Holly, I found out that Ken is in poor health. It is unlikely that Lisa will be able

<sup>1</sup> Names and locations have been changed.



to meet him. In addition to his health, his wife would likely be very upset. Lisa is content that she now knows her father's identity, and that she will be able to get to know other family members.

One of the things that Evelyn said is that if her mother, Betty, had known about Lisa, she would have gone to hell and back to go get her and raise her herself. I told Lisa, and she was delighted to hear that.

On Saturday, 14 September 2019, Lisa called her Aunt Evelyn, they talked for a long time. They have been exchanging photos through text. Lisa said that Evelyn told her that her father only drank Dr. Pepper. Guess what? Lisa only drinks Dr. Pepper!

On that same Saturday, I talked with Frank on the phone. He was also ecstatic about the family history discovery. Frank has run a gas station for many years in Virginia. He said if Lisa ever comes to visit, he would be happy to introduce her to other family members. He said he would also tell her stories about her father.

Lisa said she is a little overwhelmed, but she is taking it in stride. She said it is incredible to see family photos and see herself in the faces. She plans to go to Virginia this next summer.

It has been an amazing week working on this project. It was almost like therapy, as it took my mind off the medical issues. However, this story is not over. Lisa's sister has taken her DNA test and is awaiting results. When they come in, I will work on locating their mother and Lisa's sister's father. The adventure continues.

## David Rumsey Historical Map Collection

*LauraDenise White*

David Rumsey was inspired to start collecting maps after finding himself temporarily stranded in the Owyhee Canyonlands in the late 1970s.

The full story of Rumsey's "mis-adventure" can be read at the Oregon Natural Desert Association (ONDA) website at <https://onda.org/2019/08/an-owyhee-mis-adventure-inspires-life-long-mission/>.

Today, Rumsey's collection includes over 93,000 maps, and many genealogists utilize Rumsey's online map collection when trying to piece together the mysteries of their ancestors' travels and relocations.

If you're interested in unlocking the treasures of your family history using this amazing map collection, the

maps are available for free on David Rumsey's website at <https://www.davidrumsey.com/>.

Rumsey's website also features a variety of ways to search for specific maps, including a search system powered by MapRank™ Search from Klokantec.



Technologies.

This search feature allows you to choose a location anywhere in the world, set a time frame you want to explore, and then review all the historical maps from Rumsey's collection that fit your search criteria.

When you click on each map in the search results, another tab on your browser will open to show you not only the map itself, but also a detailed description that tells even more about the history of the map's creation and dimensions.

The collecting of these maps started with a focus on the Owyhee Canyonlands. As the ONDA article notes, many of the maps that Rumsey originally collected focused on "the American West including early non-Native explorer's maps of the western territories, maps created by trappers, military expeditions and scientific surveys." Searching through

Rumsey's website, one can quickly see that his interest in maps now spans all areas of the globe.

We found David Rumsey's Map Collection to be a great research tool, as well as a visual way of connecting with the paths of our ancestors.

<b>Author:</b>	Fer, Nicolas de, 1646-1720
<b>Date:</b>	1695
<b>Short Title:</b>	Paris
<b>Publisher:</b>	Chez l'Auteur (De Fer)
<b>Publisher Location:</b>	Paris
<b>Type:</b>	Atlas Map
<b>Obj Height cm:</b>	24
<b>Obj Width cm:</b>	29
<b>Scale 1:</b>	41,800
<b>Note:</b>	Detailed map of Paris. Shows numerous details, including streets and street names, buildings, landmarks and parks. Includes 3 numerical lists to public places, departments and important sites.
<b>Reference:</b>	Phillips, A List of Geographical Atlases in the Library of Congress, 517a, Shirley, T,Fe-1c.





**GENTALK @ GFO**

# **SCANNING & ARCHIVING**

## **Your Family Photos & Documents**

**Nov  
16  
2pm**

**Presented by Lori Washburn**

**LORI WASHBURN** has been a GFO member for five years, and has been doing genealogy off and on for 28 years. She was introduced to genealogy over 50 years ago, helping her mother search microfilmed census records. Both her mother and mother-in-law were genealogists and collected and/or inherited large numbers of family documents and photographs dating back to the mid-1800s.

Lori inherited those photos and documents, and over the past eight years has scanned and archived thousands of photos and documents. Not one to do things half way, she researched methods and equipment before starting, and over time has adapted and changed course more than once in the way she scans, files, labels and stores.

Whether you want to scan just a few photos, have inherited a box of photos, or plan on visiting a relative who might have photos, this class is for you. We will briefly discuss scanners and then learn how to scan and archive those precious photos and documents, as well as how to file the scans. We will also touch on the basics of touching up your scans.

**2505 SE 11th Ave., B18, Portland**  
**gfo.org | 503-963-1932**

**Free &  
Open  
to the  
Public**





# YOU CAN'T STOP TIME...



But you can turn it back one hour on Saturday night, November 2nd, as Daylight Saving Time ends and Standard Time again begins.

## Online Databases at GFO Library

Did you know you can access some top-of-the-line subscription research databases at GFO's library?

Members have free access to the following databases from a number of our library computers. Non-members are welcome to also access these databases using the \$7 day-pass or by visiting our library on one of our Free First Mondays.

- Ancestry World Edition
- FamilySearch Affiliate Library
- Find My Past (United Kingdom + PERSI)
- American Ancestors (New England Historic Genealogical Society)
- HistoryGeo (land records and historic U.S. maps)
- Fold3 (military and other historical records),
- Newspapers.com (historical newspapers)
- GenealogyBank.com (more historical newspapers)

Our Research Assistants can help patrons with tools, techniques, and other research best-practices to get the most out of their online searching.

You can also give these resources a try for free at GFO's library the first Monday of every month.

## Meet the Oregon Chapter of the Association of Professional Genealogists

The Association of Professional Genealogists (APG) is an international organization dedicated to supporting people who are engaged in genealogy at a professional level. APG's efforts include advocacy, collaboration, education, and the promotion of ethical standards within the genealogical profession.

In Oregon, we work together at the local and state levels to help each other and the general public with their genealogical needs.

While our primary focus is on genealogical research, APG is also comprised of speakers, writers,

librarians, and archivists. We have different areas of expertise, such as DNA, heir research, specific geographical areas of interest, and various historic periods.

If your society or organization has a need for a speaker, we would be glad to help. We can also staff "Ask an Expert" panels or a booth or table at a seminar or conference to spread the word about a local resource that may be new to many genealogy enthusiasts.

For more information about APG, go to [www.apgen.org](http://www.apgen.org). For more information about the Oregon chapter and what we can do for you, contact Tricia Oberndorf at [obiegenealogy@gmail.com](mailto:obiegenealogy@gmail.com).



Association of Professional  
**GENEALOGISTS**



## Exciting GFO Library News

Laurel Smith

Our dedicated library volunteers have finished re-cataloging all the books in the California section of GFO's holdings. This was the last geographic region to be done. All that is left now is to finish relabeling the books with the new call numbers. The six-year effort of reclassifying and recataloging our nearly 53,000 library items, which began with *Ranger 1961* [Roosevelt High School yearbook] on January 24, 2014, is nearly complete. Finding materials should be a bit easier now.

We began this project to make library resources easier to locate. As with many new efforts, the learning curve was steep. Consequently, the areas re-cataloged first will need some cleanup. We're in the process of checking Virginia and West Virginia books to improve their catalog records. At some point, the separate collections (oversized books, atlases, yearbooks, city directories, and so on) will need some work. But for now, they are all in the catalog, with images, subject headings, new call numbers, and new labels.

If you use the online catalog, perhaps you've noticed that we've added images of the holdings to make them easier to locate. We scan book covers so you'll have an idea what you're looking for when you get to the shelf. Microfilms, microfiche, cassettes, CDs, and the like have images to tell you that the content is in some form other than a book.



The only area still to be recataloged and relabeled is Family Histories. Look to the right for a comparison of two family history catalog records, old and new.

The value of a better, more complete record should be a benefit to researchers. In the examples shown to the right, if you are researching the surnames Brown, Bulkeley, Montgomery, Todd, or Tuttle, the new catalog record tells you immediately that this may be a book to consult. The new record also provides an alternate spelling for Mighill—Mighell. In addition, you'll know that you're looking for a book with a black binding and a black and white cover. Finally, the call number has been changed from 929.2 **M634** Bern to 929.2 **Mighill** Bern, as Mighill is easier to spot than one M634 among a shelf full of others.

There will be more exciting news to follow. Be sure to watch GFO's eNews for new book arrivals and January's *Forum Insider* for the next big GFO Library announcement.

Example of our old catalog record:

**Record Information**

Material Type: Loan history 0 status 1:

Call Number	Location	Barcode	Due
929.2 M634 Bern	Shelf	52011	

**Genealogy and history of the Mighill family of Rowley, East Riding, Yorkshire, England : whose descendants established the Colony of Rowley, Massachusetts in 1639**  
 Author: [Bernard, Richard Montgomery](#)  
 Related Names: by Richard Montgomery Bernard.  
 Format: Book  
 Place: [S.I.]  
 Publisher: R. M. Bernard]  
 Pub. Date: 2013.  
 Pages: 142 p.; maps; 28 cm.

Example of our new catalog record for the same item:

Add to bibliography MARC

Genealogy and history of the Mighill family of Rowley, East Riding, Yorkshire, England : whose descendants established the colony of Rowley, Massachusetts in 1639  
 Author: [Bernard, Richard Montgomery](#)  
 Related Names: by Richard Montgomery Bernard, M.D.  
 Format: Book  
 Subject:

- [Mighell family.](#)
- [Brown family.](#)
- [Bulkeley family.](#)
- [Montgomery family.](#)
- [Todd family.](#)
- [Tuttle family.](#)
- [Yorkshire \(England\) -- Genealogy.](#)
- [Rowley \(Mass.\) -- Genealogy.](#)
- [England -- Yorkshire.](#)
- [Massachusetts -- Rowley.](#)
- [Genealogy.](#)

**Note:**

- Includes bibliographical references (pages 17-19) and index.

Place: [Wilsonville, Oregon]  
 Publisher: [Richard Montgomery Bernard]  
 Pub. Date: 2013  
 Pages: 142 pages; illustrations, genealogical tables, maps; 28 cm





## Bend Genealogy Society's Spring Seminar 2020

*Friday, April 24th and Saturday, April 25th*

The Bend Genealogy Society is pleased to announce that the Family History Fanatics will be their 2020 Spring Seminar presenters. Known mostly for their popular genealogy channel on YouTube, Andy and Devon Noel Lee are as informative as they are entertaining.

On Friday, April 24th, Andy will facilitate an afternoon DNA workshop. Saturday, April 25th, we'll have a full day of genealogy. Devon and Andy will speak on four topics of interest to all genealogists, experienced or just beginning.

Mark your calendar now! You won't want to miss this!

As always, registration is required. Be sure to keep an eye on the Bend Genealogy Society's website (<http://www.orgenweb.org/deschutes/bend-gs/>) for more details, such as location, times, and fees.



### First Families of Multnomah County

In 2009, the Genealogical Forum of Oregon, Inc. (GFO) established a program to recognize some of the "First Families" of Multnomah County, Oregon, by issuing a certificate to descendants in one of three categories to qualified descendants.

#### CERTIFICATE TYPES:

- **Pioneer** - If your family member was a resident before the official formation of Multnomah County on December 22, 1854.
- **Early Settler** - If your family member was a resident before the completion of the transcontinental railroad to Portland on September 11, 1883.
- **Lewis & Clark Expo** - If your family member was a resident before the closing date of the Lewis & Clark Exposition on October 15, 1905.

Applications for a certificate will be accepted from anyone who is attempting to prove direct descent from an individual residing within Multnomah County before October 15, 1905. Once verified by standard genealogical rules of documentation, certificates will be issued by mail to the applicant.

The application fee is \$20 and is non-refundable. The applicant may request additional certificates for

documented descendants of a previously submitted settler for an additional \$15 each.

All verified material may be published and made available for purchase. Descendants, including certificate holders, born after 1940 (the date of the last public federal census) will be listed only as "Living," unless their consent is given to use their name.

To find out more and to download an application, visit GFO's website at <https://gfo.org/resources/special-projects-programs.html>.



*United States. Farm Security Administration, Sponsor Rothstein, Arthur (1915-1985), Photographer*



## New Books at GFO

Lots and lots of new books have been received. Many are donations, some are purchases or the result of trades with other libraries.

The GFO Library call numbers are listed below each title. You can find these books and many more by searching our ever-expanding online library catalog at [gfo.org/resources/research-library/search-the-library-catalog](http://gfo.org/resources/research-library/search-the-library-catalog).

Maybe the answer to your brick wall lies within these pages. Come on in and see what they reveal:  
*The Black Seminoles: history of a freedom-seeking people*

- (976 .Ethnic Black Semi Port)

*Little towns of Texas*

- (976.40 .Hist-Au Town StCl)

*Marriage records of Mason County, Kentucky: 1845-1855, volume V.*

- (976.95 Maso .VR-M 1845-1855)

*Potawatomi trail of death: 1838 removal from Indiana to Kansas*

- (977 .Ethnic NatAm Pota Remo 1838)

*A guide to Chicago and Midwestern Polish-American genealogy*

- (977 .Ethnic Pol How-To Krus 2018)

*Arcola, 1866-1966. Arcola, Ind, The Committee, 1966.*

- (977.25 Alle Arco .Hist-Yr 1866-1966)

*The Indiana journal: Indianapolis IN, marriages and obituaries, 1825-1835*

- (977.25 Mari .VR 1825-1835 News InJo)

*The Indiana journal: Indianapolis IN, marriages and obituaries, 1835-1899*

- (977.25 Mari .VR 1835-1899 News InJo)

*The Westfalians: from Germany to Missouri.*

- (977.80 .Ethnic GerW Migr Kamp)

*Holt County, Missouri deaths: 1883-1893*

- (977.85 Holt .VR-D 1883-1893)

**#GIVING**  
**TUESDAY™**  
**DEC. 3**  
**9 A.M. - 5 P.M.**

One-day library volunteer blitz!  
 Give a few hours or make a day of it.  
 Please Help!

**BONUS: Coffee, pastries, pizza, and pop**



## Treasurer's Reports

By Erin Randall

<b>September 2019 Income</b>	<b>\$9,050.51</b>
Contributions & Investments	\$3,543.66
Memberships	\$2,022.00
Seminars & Other Programs	\$2,772.00
Library & Research	\$429.85
Book Sales & Publications	\$283.00
<b>September 2019 Expenses</b>	<b>\$10,945.28</b>
Administration	\$589.25
Education Programs	\$2,000.00
Facilities & Equipment	\$4,915.76
Library & Research	\$3,440.27
<b>Net Income for the month</b>	<b>-\$1,894.77</b>
<b>Year-to-Date Net Income</b>	<b>-\$1,435.16</b>

Full financial statements are available upon request.



PMUG College

PMUG College returns to host a new series of classes at the GFO. These classes are free for GFO members who use Mac computers and Apple's mobile devices. Non-members can attend for \$10 per class.

Wednesday, November 13th, 6–8 p.m.

### iOS SYSTEM FOR IPHONE, IPAD, & ITOUCH

- ✔ Manage your apps on your iPhone and iPad.
- ✔ Use Settings to customize how your device works.
- ✔ Learn how to debug and reset your device when problems arise.
- ✔ Oversee your data usage to control programs that continue GPS.
- ✔ ... and much more!

To register: call 503-228-1779 or email: [college@pmug.org](mailto:college@pmug.org).

Bring your Mac/iPad to participate with instruction. If you would like additional info for attending this class, please email [college@pmug.org](mailto:college@pmug.org).

## Special Interest Groups

<http://gfo.org/learn/special-interest-groups/>

### African American

3rd Saturdays, 12–2 p.m.

Led by Janice Sellers.

[African\\_American@gfo.org](mailto:African_American@gfo.org)

### British Group

4th Saturdays in Jan., Mar., May, Sept.,  
1–3 p.m.

Led by Duane Funk.

[UK@gfo.org](mailto:UK@gfo.org)

### DNA – Beginners

4th Saturday in Feb., May, Aug., & Nov.,  
9 a.m.–12 p.m.

Led by Emily Aulicino.

[DNA@gfo.org](mailto:DNA@gfo.org)

### DNA – Advanced

4th Saturday in Jan., Apr., July, and Oct.,  
9 a.m.–12 p.m.

Led by Emily Aulicino.

[DNA@gfo.org](mailto:DNA@gfo.org)

### DNA – Q & A

1st and 3rd Wednesdays, Sept.–June,  
1–3 p.m.

Led by Lisa McCullough.

[DNA\\_QA@gfo.org](mailto:DNA_QA@gfo.org)

### Family Tree Maker Beginners

3rd Sundays, 1–3 p.m. Jan., Apr., Jul.,  
Oct.

Led by Laurel Smith.

[FTM@gfo.org](mailto:FTM@gfo.org)

### Family Tree Maker Users' Group

3rd Sundays, 1–3 p.m., Feb., Mar., May,  
June, Aug., Sept., Nov., Dec.

Led by Joyce Grant-Worley.

[FTM@gfo.org](mailto:FTM@gfo.org)

### French Canada Group

3rd Sundays, 3:30–5 p.m.  
(no July or August meetings)

Led by Bob LaMarche.

[FrCan@gfo.org](mailto:FrCan@gfo.org)

### Genealogy Problem Solvers

3rd Saturdays (except July),  
9:30–11:30 a.m.

Led by Katie Daly.

[GPS@gfo.org](mailto:GPS@gfo.org)

### German Group

1st Saturdays, 1–3 p.m.

Led by Mike Fernandez and Tia Cobb.

[German@gfo.org](mailto:German@gfo.org)

### Italian Group

1st Tuesdays, 10 a.m.–12 p.m.

Led by Nancy Matheny

[Italian@gfo.org](mailto:Italian@gfo.org)

### Great Lakes Region

2nd Saturdays monthly (except Jul., Aug.,  
Dec.), 9:30–11:30 a.m.

Led by Lynn Rossing.

[GreatLakes@gfo.org](mailto:GreatLakes@gfo.org)

### Irish Group

3rd Wednesdays Feb., Apr., June, Aug., &  
Oct., 6–8 p.m.

Led by Karen Hubbard. [Irish@gfo.org](mailto:Irish@gfo.org)

### Learn & Chat

1st & 3rd Weds, 10 a.m.–12 p.m.

Led by Jeanne Quan & Sandy Alto.

[LearnandChat@gfo.org](mailto:LearnandChat@gfo.org)

### Mexican Ancestry

2nd Fridays, Feb., Apr., June, and Oct.  
11:30 a.m.–1:30 p.m.

Led by Vincent Ramirez.

[SW@gfo.org](mailto:SW@gfo.org)

### Virginia Group

1st Saturdays, Sept.–June, 10 a.m.–12 p.m.

Led by Judi Scott and Carol Surrency.

[Virginia@gfo.org](mailto:Virginia@gfo.org)

### Writers' Forum

2nd Saturdays, Sept.–May, 1–3 p.m.

Led by Peggy Baldwin.

[Writers@gfo.org](mailto:Writers@gfo.org)





# DNA All Day

With internationally-renowned genetic genealogy expert



## BLAINE BETTINGER

APRIL

4 & 5

Image: Dreamstime.com 22510350 Rolffimages

## Genealogical Forum of Oregon **Spring Seminar**

### Saturday, April 4

10 a.m. - 4:30 p.m.

Center for Self Enhancement

#### ANSWER QUESTIONS WITH DNA EVIDENCE

- Using Y-DNA and mtDNA to Explore Your Ancestry
- Using Autosomal DNA for 18th and 19th Century Mysteries
- Using DNA Painter to Map and Analyze Your Autosomal DNA
- Evaluating a Genealogical Conclusion Including DNA

### Sunday, April 5

9:30 a.m. - Noon

Genealogical Forum of Oregon

#### FOCUS ON THIRD-PARTY TOOLS

- Advanced Third-Party Tools
- The Latest Advances in Third-Party Tools for Autosomal DNA

Register Online  
[gfo.org/dna](http://gfo.org/dna)

#### Blaine Bettinger, PhD, JD

is a professional genealogist specializing in DNA evidence. In 2007 he started *The Genetic Genealogist*, one of the earliest blogs on the topic. Blaine is the author of *The Family Tree Guide to DNA Testing and Genetic Genealogy*, and co-author with Debbie Parker Wayne of the award-winning *Genetic Genealogy in Practice*. He also co-authored "Genetics for Genealogy" with Judy Russell in 2018's *Professional Genealogy: Preparation, Practice & Standards*.

Blaine is or has been an instructor for genetic genealogy courses at national institutes, a trustee for the New York Genealogical and Biographical Society's Board of Trustees, and a board member for the Association of Professional Genealogists.

*The Forum Insider*  
 Genealogical Forum of Oregon  
 2505 SE 11th Ave., Suite B-18  
 Portland, OR 97202-1061

ADDRESS SERVICE REQUESTED

Non-Profit Organization US POSTAGE PAID Portland Oregon Permit No. 745
---



**November 2019**

**GFO Calendar**

<http://gfo.org/who-we-are/calendar.html>

~~~~~November~~~~~			~~~~~December~~~~~		
Sat 11/02	10 a.m.–12 p.m. 1–3 p.m.	Virginia Group German Group	Sun 12/01	9 a.m.–12 p.m.	Manuscripts Work Party
Sun 11/03	9:30 a.m.–12 p.m.	Manuscripts Work Party	Mon 12/02	<b>Free to Non-Members</b>	<b>Open until 5 p.m.</b>
Mon 11/04	<b>Free to Non-Members</b>	<b>Open until 5 p.m.</b>	Tues 12/03	10 a.m.–12 p.m.	Italian Group
Tues 11/05	10 a.m.–12 p.m.	Italian Group	Wed 12/04	10 a.m.–12 p.m. 1–3 p.m.	Learn & Chat DNA Q&A: Beyond the Basics
Wed 11/06	10 a.m.–12 p.m. 1–3 p.m. <b>Library Open until 8 p.m.</b>	Learn & Chat DNA Q&A: Beyond the Basics	Sat 12/07	10–12 p.m. 1–3 p.m.	Virginia Group German Group
Sat 11/09	9:30–11:30 a.m. 1–3 p.m.	Great Lakes Region Group Writers' Forum	Sun 12/08	9 a.m.–12 p.m.	Library Work Party
Sun 11/10	9 a.m.–12 p.m.	Library Work Party	Tues 12/10	6:10–8:10 p.m.	Board Meeting
Tues 11/12	6:10–8:10 p.m.	Board Meeting	Wed 12/11	6–8 p.m. <b>Library Open until 8 p.m.</b>	Portland Mac Users' Group
Wed 11/13	6–8 p.m. <b>Library Open until 8 p.m.</b>	Portland Mac Users Group	Sat 12/14	1–3 p.m.	Writers' Forum
Sat 11/16	9:30–11:30 a.m. 12–2 p.m. 2–3 p.m.	Genealogy Problem Solvers African American Group GenTalk: Preserving Photos	Sun 12/15	9 a.m.–12 p.m. 1–3 p.m. 3:30–5 p.m.	Library Work party Family Tree Maker Users Group French Canada Group
Sun 11/17	9 a.m.–12 p.m. 1–3 p.m. 3:30–5 p.m.	Library Work Party Family Tree Maker Users' Group French Canada Group	Wed 12/18	10 a.m.–12 p.m. 1–3 p.m. <b>Library Open until 8 p.m.</b>	Learn & Chat DNA Q&A: The Basics
Wed 11/20	10 a.m.–12 p.m. 1–3 p.m. <b>Library Open until 8 p.m.</b>	Learn & Chat DNA Q&A: The Basics	Sat 12/21	9 a.m.–11:30 a.m. 12–2 p.m.	Genealogy Problem Solvers African American Group
Sat 11/23	9 a.m.–12 p.m.	DNA Beginners Group	Sun 12/22	9 a.m.–12 p.m.	Library Work Party
Sun 11/24	9 a.m.–12 p.m.	Library Work Party	Wed 12/24	<b>Library Closed</b>	<b>Christmas Eve</b>
Wed 11/27	<b>Library Closes at 1 p.m.</b>	<b>Thanksgiving Holiday</b>	Thurs 12/25	<b>Library Closed</b>	<b>Christmas Day</b>
Thurs 11/28	<b>Library Closed</b>	<b>Thanksgiving Holiday</b>	Sun 12/29	9 a.m.–12 p.m.	Library Work Party
			Wed 12/31	<b>Library Closed</b>	<b>New Year's Eve</b>