



THE Forum Insider

Newsletter of the Genealogical Forum of Oregon
Volume 35 • Number 3 • October 2023

GFO's Fall Seminar Features Technology

Thomas MacEntee of Genealogy Bargains Will Tackle Tools and Tech

When our members and Open House attendees are surveyed, common topic requests for future events are "Methodology" and "Technology." To meet this request, the GFO scheduled Thomas MacEntee for our Virtual Fall Seminar 2023. This is a full-day conference with four presentations on "Tools and Tech." Thomas is a nationally known genealogy presenter and frequently gives presentations on these topics. For our Virtual Fall Seminar 2023, he is giving these presentations:

- You Use WHAT for Your Genealogy?
- Google Tools for Genealogists
- Genealogy Tech with Thomas
- Tech Troubleshooting – What Would You Do?

The full-day conference for members is only \$35 through October 31 when the cost will rise to \$40. Non-member rates are \$50 through October 31 and then \$55.

The seminar sessions will be recorded. GFO members who register for the seminar not only get the discounted member price, but they will also be given access to the recordings through December 31, 2023.

To register, visit [GFO Fall Seminar 2023](#).

To learn more about Thomas MacEntee visit his website, [Genealogy Bargains](#).

To voice your opinion regarding future educational topics, see the survey on [page 11](#).

Oregon Counties and Their Records

This issue highlights seven counties in The Forum Insider's year-long records series: Baker, Crook, Deschutes, Grant, Jefferson, Union, and Wheeler.

The Genealogical Records of Baker, Grant, Union, and Wheeler Counties

Geri Auerbach, AG®

Baker County was one of the seventeen counties created from the original Wasco County. The county was named for Oregon senator Edward Baker, a colonel in the Union Army who was killed at the Battle of Balls Bluff in 1861.¹ At 3,068 square miles, it is the tenth largest county in Oregon.² As of the 2020 U.S. federal census, Baker County had 16,668

residents, making it the state's twenty-eighth most populous county.³

Grant County was created on 14 October 1864. It was carved out of Wasco and Umatilla Counties. Grant County is named for General Ulysses S. Grant.⁴ The county is 4,529 square miles and is the seventh largest county in Oregon.⁵ Grant County had a population of 7,233 on the 2020 U.S. federal

Continued on [page 3](#)



Genealogical Forum of Oregon

2505 SE 11th Ave., Suite B18
Portland, OR 97202-1061

Mission

To inspire and empower every person to *discover* and *engage* with their family history.

Contact Us

503-963-1932
info@gfo.org

Visitor Information

Library Hours
Sundays 11–3 p.m.
Mondays & Tuesdays 9:30 a.m.–5 p.m.
Thursdays 1–5 p.m.

Executive Board of Directors

President Geoff Smith	Treasurer Rebecca Tait
Vice President Geri Auerbach, AG®	Director at Large Harold Hinds
Secretary Alexa Waddle	

Committee Chairs on the Board

Insider Editors Geri Auerbach, AG® Keri Logan	Online Meeting Coordinator Tina Lawson
Library Laurel Smith	Purchasing Loretta Welsh
Membership Jane McGarvin	Webmaster Ed Vandehey
New Home Geoff Smith	

Submissions to *The Forum Insider*

Please send short stories, news, announcements, comments, and corrections to Geri Auerbach, AG®, and Keri Logan, Editors, at insider@gfo.org.



In This Issue

GFO's Fall Seminar Features Technology.....	1
The Genealogical Records of Baker, Grant, Union, and Wheeler Counties	1
Create a Family (Christmas) Tree.....	5
Readers Respond	7
The Genealogical Records of Crook, Deschutes, and Jefferson Counties.....	9
GFO Education Committee Seeks Input	11
Volunteer Needed to Process Memberships.....	11
Brick Wall? Our Problem Solvers Could Help!.....	11
Online Events for October	13
GFO Stars.....	14
Rogue Valley Genealogical Society SIGs	14
GFO Special Interest Groups.....	15
Treasurer's Report	16

Follow us



The Forum Insider [ISSN 1051-5666 (print), ISSN 2377-469X (online)] is the newsletter of the Genealogical Forum of Oregon Inc., 2505 SE 11th Ave., Suite B-18, Portland, OR 97202-1061. Dues are \$51 per year for individual memberships and \$77 for joint memberships. Membership includes digital subscriptions to *The Bulletin* (March, June, September, and December) and *The Forum Insider* (January, February, April, May, July, August, October, and November). Material from *The Forum Insider* may be reproduced provided credit is given to the publication, the author of the article, and the Genealogical Forum of Oregon. *The Forum Insider* staff includes Geri Auerbach, AG®, and Keri Logan, Editors. Many thanks to our proofreaders April Ober, Tanya Goffman, and Harry Auerbach.



The Genealogical Records of Baker, Grant, Union, and Wheeler Counties, from page 1

census, which made it Oregon's fourth least populated county.⁶

Union County was carved out of northern Baker County on 14 October 1863. The county was named for the existing town of Union, which was founded in 1862. The town was named "Union" during the Civil War as a sign of patriotism.⁷ Union County is 2,027 square miles, making it the sixteenth largest county in Oregon.⁸ As of the 2020 U.S. federal census, Union County is the state's twenty-third most populous county with a population of 26,196.⁹

Wheeler County was created on 17 February 1899. Its initial boundaries have remained unchanged since the county's formation. The county was carved from Crook, Gilliam, and Grant counties. The county was named for Henry Wheeler, an early stage-line operator in the area.¹⁰ The twentieth largest county in Oregon, it is currently 1,445 square miles.¹¹ As of the 2020 U.S. federal census, Wheeler County had 1,451 residents, making it the state's least populous county.¹²

Comprehensive Resources

- 1 [FamilySearch Research wiki](#) for Baker County records
- 2 [FamilySearch Research wiki](#) for Grant County records
- 3 [FamilySearch Research wiki](#) for Union County records
- 4 [FamilySearch Research wiki](#) for Wheeler County records
- 5 *NGS Research in the States Series: Oregon*, 3rd edition by Connie Lenzen—available at [National Genealogical Society](#)

Libraries

All of the libraries in Baker, Grant, Union, and Wheeler counties are members of the Sage Library System. Sage is a consortium of libraries in 15 counties of Eastern and Central Oregon. Through Sage, cardholders at one library can borrow materials from other Sage libraries. The items are couriered to the cardholder's library or home.

Baker County Library District—The library district

6 manages five libraries, with the main library in Baker City. The library has access to MyHeritage Library Edition and has a link to the Centennial Pioneer Families of Baker County.

7 **Grant County Library**—The library has a Northwest History room with history records, microfilm, and newspapers back to the early 1900s.

8 Union County has three libraries:

- **Cook Memorial Library**—The library has MyHeritage Library Edition available. There is also a link to "Union County Oral Histories", a collection of 175 recollections of Union County residents: **Union County Oral Histories**. The collection, which is online, is housed at Eastern Oregon University Library.
 - **Union City Library**—The Union City Library is a Carnegie Library—the only Carnegie Library in Oregon unchanged from its original structure and function. The library has a reference section with historical records from the area.
 - **Eastern Oregon University Library**—The library has many local history resources including books, historical photographs, EOU yearbooks, student newspapers, and the previously mentioned oral history collection.
- 9 **Fossil Public Library**— Wheeler County's only library is located in the same building as Fossil City Hall.

Archival/Government-held Records

10 **Baker County Records Inventory, Grant County Records Inventory, Union County Records Inventory, and Wheeler County Records Inventory**—List of and links to the variety of records relating to these counties including vital records, property, court, name change, and naturalization. Location of records is provided.

Genealogical and Historical Societies

11 **Baker County Historical Society**—The society's webpage has resources on Baker County

Continued on page 4



The Genealogical Records of Baker, Grant, Union, and Wheeler Counties, from page 3

history and Baker County Cemeteries (including the Chinese Cemetery.)

12 Grant County, Oregon Genealogical Society—The society has a **Facebook** page (no website) that lists their monthly meetings as well as photos and inquiries.

Museums

13 National Historic Oregon Trail Interpretive Center—The center, managed by the Bureau of Land Management, is closed for renovations as of this printing. A temporary exhibit is housed at the Baker Heritage Museum. When open, the center has life-sized displays, films, and more. The center is located on 500 acres that includes wagon ruts carved by pioneer covered wagons. The website has Oregon Trail historical and educational resources.

14 Baker Heritage Museum—The museum houses an interpretive collection of Baker County history, focusing on the 1860s through 1960s. The collections include Baker County

industries, Chinese heritage, and regional Native American artifacts.

15 Kam Wah Chung State Heritage Site—The site is operated by Oregon State Parks. From the website “A Chinese medical clinic, general store, community center and residence, Kam Wah Chung gives you an incomparable glimpse into the past.” The site is a National Historic Landmark. Open May 1–October 31 annually as well as Spring Break.

16 Grant County Historical Museum—Exhibits from various aspects of Grant County’s past include gold mining, ranching and tools, Chinese in Grant County, and Native American artifacts. [Check out the article, “Serendipity in John Day” by Duane Funk, in the October 2020 *Insider* (pp. 1,3) to learn about the author’s unexpected genealogical discovery at the Grant County Historical Museum].

17 Union County Museum and Museum Society—Current exhibits include collections of objects from pioneer families, the history of cattle and cowboys in America, and industries in Union County.

1 “Baker County History,” *County Records Guide*, Oregon Secretary of State–State Archives (<https://sos.oregon.gov/archives/records/county/Pages/baker-history.aspx> : accessed 20 August 2023).

2 Wikipedia, *List of Counties in Oregon* (https://en.wikipedia.org/wiki/List_of_counties_in_Oregon : 20 August 2023), County Information.

3 “State Profile,” *Oregon: 2020 Census*, United States Census Bureau (<https://bit.ly/3IBwvS1> : accessed 20 August 2023).

4 “Grant County History,” *County Records Guide*, Oregon Secretary of State–State Archives (<https://sos.oregon.gov/archives/records/county/Pages/grant-history.aspx> : accessed 20 August 2020).

5 Wikipedia, *List of Counties in Oregon*.

6 “State Profile,” *Oregon: 2020 Census*, United States Census Bureau.

7 McArthur, Lewis A., *Oregon Geographic Names* (Portland: Oregon Historical Society Press, 1992), p. 859.

8 Wikipedia, *List of Counties in Oregon*.

9 “State Profile,” *Oregon: 2020 Census*, United States Census Bureau.

10 “Wheeler County History,” *County Records Guide*, Oregon Secretary of State–State Archives (<https://sos.oregon.gov/archives/records/county/Pages/wheeler-history.aspx> : accessed 20 August 2023).

11 Wikipedia, *List of Counties in Oregon*.

12 “State Profile,” *Oregon: 2020 Census*, United States Census Bureau.

GFO Lookup Service

Bringing the library to you • Forms in MemberSpace





Create a Family (Christmas) Tree

Ornament Tutorial Shows You How to Bring Everyone to Your Celebration

Joyce and Carl Olson

Bill and Joyce Olson moved from western Washington to LaGrande, Oregon, approximately thirty years ago. This is when they both became very active in genealogy research and the creation of family trees. They were early adopters of Family Tree Maker software, as well as Ancestry online. Bill was great at finding public records online. He skilfully communicated with genealogy research assistants/volunteers overseas, who located and translated information from their families' ancestral homelands. While not members of a local genealogy group, Bill and Joyce spent many afternoons at the LaGrande, Oregon, FamilySearch Center gathering family information. Many times when their adult kids brought friends or potential spouses to their house, Bill would have worked up a short family genealogy on each guest before they departed for the night.

After 60 years of marriage, Bill passed away in October 2021. That year, Christmas was something of a blur for Joyce. So, when the holidays were coming up in 2022, Joyce decided she wanted Bill present during the Christmas festivities, and the photo ornaments she created were a way to have Bill close. Initially, it was just one ornament with Bill's picture. Next she added their parents, and then why not herself? Heck, she ended up with ornaments for the entire immediate family, living and deceased. Joyce scattered these photo ornaments around her tree along with other festive ornaments and lights to create a "Family Christmas Tree."



Joyce Olson's Christmas tree in 2022 displays photographs of the family, both living and deceased.

Make Your Own Family Christmas Tree



SUPPLIES

- Photo or photo paper
- Wide mouth canning jar lid and ring/band
- Marker/pen
- Scissors
- At least 18" of narrow ribbon for each ornament
- Ruler
- Craft glue gun

Continued on page 6



Create Your Own Family Christmas Tree, from page 5

Step 1

Locate a photo you would like to use. If coming from a computer/phone, print out a copy on regular white paper. Use the canning jar ring/band to verify the size that will appear in the final ornament. If it doesn't seem right, resize the photo and try again until you are happy with the look. Once satisfied, print the final picture onto photo paper for a better finished product.

Step 2

Set the canning jar lid on the portion of the photo you wish to capture within your ornament and then trace around the exterior edge of the canning jar lid with a marker/pen.



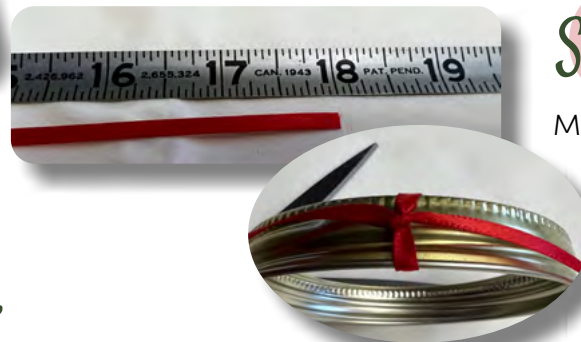
Step 3

Remove the canning jar lid and cut the photo circle out using the line you created with the marker/pen as a guide.



Step 4

Measure 18" of your ribbon and then cut. Tie the ribbon loosely with a knot around the canning jar ring/band making sure the two ends of the ribbon are about even.



Step 5

Set the canning jar ring/band upside down on the table. Insert your photo circle, face down into the canning jar ring/band. Make sure that the top of the photo and the attached ribbon lineup so that your ornament hangs with the photo oriented correctly. Set the canning jar lid face down into the canning jar ring/band.



Continued on page 7



Create Your Own Family Christmas Tree, from page 6

Step 6

Using a craft glue gun, apply three to four dabs of glue around the inside edge of the canning jar ring/band, being sure to place one dab where the ribbon and canning jar lid meet so that the ribbon does not try to spin around the ring/band.



Step 7

Once the glue is dry, turn the ornament over and admire your craftiness.



At this point, you can either tie the ribbon into a bow and hang with an ornament hanger or use the actual ribbon to tie the ornament onto a tree branch.

Photographs of the ornament-making process and the individuals shown in the ornaments used with permission of Joyce Olson.

READERS RESPOND

Anne Mitchell, GFO Member

In regard to the "Small Act of Kindness" article by Kathy Valdez in the August issue of the Insider, I must tell of my similar interaction with a city clerk in Vevey, Switzerland.

When I came to her office late in the day, unannounced, she took my information and told me to come back the next day. We had not communicated well, as I didn't speak French and she didn't speak English. I was so nervous! But when I returned, I found that she had left her office building, walked across the town to the records storage vaults, and rummaged long enough to find a complete listing of my entire family in the town history, including six

generations of births, deaths, and marriages all arranged in a family tree! Pure ecstasy! She also helped me by showing the meanings of small symbols they had used in history, like crosses for deaths.

I immediately went to a local floral shop to send her flowers, but the shop was closed. We left the next day.

Back home in Portland, I found the floral shop online and placed an order. She not only e-mailed me to thank me for the flowers, but she continued to help me with translation for a few days until I understood the ancient French-Swiss records. The whole episode outshone everything else that happened on that month-long Swiss trip!



2023
Fall Seminar

A Day of Tools & Tech

with

Thomas MacEntee, GenealogyBargains.com

Date

11 NOVEMBER 2023 • 9 AM-4 PM PT

Pricing

	Early Bird, until Oct 31	Standard
Members	\$35	\$40
Nonmembers	\$50	\$55

Registration & Session Info

WWW.GFO.ORG/FALL2023



The Genealogical Records of Crook, Deschutes, and Jefferson Counties

Gerri Auerbach, AG®

Crook County was one of the seventeen counties created from the original Wasco County. The county was initially established on 24 October 1882. Subsequently, Jefferson County and Deschutes County were carved from Crook County. Crook County has had the same boundaries since 1927. The county was named for U.S. Army Major-General George Crook.¹ Crook County is 2,980 square miles, making it the twelfth largest county in Oregon.² As of the 2020 U.S. federal census, Crook County had 24,738 residents, making it the state's twenty-fourth most populous county.³

Deschutes County, as mentioned above, was carved from Crook County on 13 December 1916.⁴ Deschutes County is named for the Deschutes River, which has had many names, but was known during the period of fur trading as Riviere des Chutes or Riviere aux Chutes, which both translate to "River of the Falls."⁵ The county is 3,018 square miles and is the eleventh largest county in Oregon.⁶ Deschutes County had a population of 198,253 on the 2020 U.S. federal census, which made it Oregon's seventh most populated county.⁷

Jefferson County was carved out of Crook County on 12 December 1914. The county was named for Mount Jefferson.⁸ Mount Jefferson was named

by Lewis and Clark on 30 March 1806 in honor of President Jefferson.⁹ Jefferson County is 1,781 square miles, making it the nineteenth largest county in Oregon.¹⁰ As of the 2020 U.S. federal census, Jefferson County had a population of 24,502 making it the state's twenty-fifth most populous county.¹¹

Comprehensive Resources

- 1 **FamilySearch Research wiki** for Crook County records
- 2 **FamilySearch Research wiki** for Deschutes County records
- 3 **FamilySearch Research wiki** for Jefferson County records
- 4 *NGS Research in the States Series: Oregon*, 3rd edition by Connie Lenzen—available at **National Genealogical Society**

Libraries

The libraries of Crook, Deschutes, and Jefferson Counties share an online library catalog. A library card holder from one library can request books from any of the three library systems.

- 5 **Crook County Library**—The library is located in Prineville and has in-library online access to

Continued on page 10

1 "Crook County History," *County Records Guide*, Oregon Secretary of State-State Archives (<https://sos.oregon.gov/archives/records/county/Pages/crook-history.aspx> : accessed 29 August 2023).

2 Wikipedia, *List of Counties in Oregon* (https://en.wikipedia.org/wiki/List_of_counties_in_Oregon : 29 August 2023), County Information.

3 "State Profile," *Oregon: 2020 Census*, United States Census Bureau (<https://bit.ly/3IBwvS1> : accessed 29 August 2023).

4 "Deschutes County History," *County Records Guide*, Oregon Secretary of State-State Archives (<https://sos.oregon.gov/archives/records/county/Pages/deschutes-history.aspx> : accessed 29 August 2023).

5 McArthur, Lewis A., *Oregon Geographic Names* (Portland: Oregon Historical Society Press, 1992), p. 249-250.

6 Wikipedia, *List of Counties in Oregon* (https://en.wikipedia.org/wiki/List_of_counties_in_Oregon : 29 August 2023), County Information.

7 "State Profile," *Oregon: 2020 Census*, United States Census Bureau (<https://bit.ly/3IBwvS1> : accessed 29 August 2023).

8 "Jefferson County History," *County Records Guide*, Oregon Secretary of State-State Archives (<https://sos.oregon.gov/archives/records/county/Pages/jefferson-history.aspx> : accessed 29 August 2023).

9 McArthur, Lewis A., *Oregon Geographic Names* (Portland: Oregon Historical Society Press, 1992), p. 591.

10 Wikipedia, *List of Counties in Oregon* (https://en.wikipedia.org/wiki/List_of_counties_in_Oregon : 29 August 2023), County Information.

11 "State Profile," *Oregon: 2020 Census*, United States Census Bureau (<https://bit.ly/3IBwvS1> : accessed 29 August 2023).



The Genealogical Records of Crook, Deschutes, and Jefferson Counties, from page 9

Ancestry Library Edition and Heritage Quest Online.

6 Deschutes Public Library—The library has in-library access to Ancestry Library Edition, HeritageQuest Online, and MyHeritage Library Edition. The library has 43 “15 Minute Histories,” which are digitized interviews recorded in 1953. The interviews are with early pioneers of Central Oregon. The downtown Bend Library has microfilm of *The Bulletin* newspaper from 1903–2014. There are also searchable indexes for the newspaper from 1903–1972 and 1984–1994. The Redmond branch has *The Redmond Spokesman* on microfilm for the years 1910–2014.

7 Jefferson County Library District—The library is located in Madras. The library has in-library access to Ancestry Library Edition, in-library and home access to Fold3, and the library is a FamilySearch Affiliate Library. The library has the newspaper, *The Madras Pioneer*, on microfilm.

Archival/Government-held Records

8 Crook County Records Inventory, Deschutes County Records Inventory, and Jefferson County Records Inventory—Oregon State Archives lists of and links to the variety of records relating to these counties, including vital records, property, court, name change, and naturalization. Location of records is provided.

City of Bend Historic Maps—This collection has the 1913, 1917, 1920, 1928, 1950 Sanborn Maps as well as other historic maps.

Genealogical Societies, Historical Societies, and Museums

9 Bowman Museum and Historical Society of Crook County—The Historical Society of Crook County has merged with the Crook County Historical Society at the A.R. Bowman Memorial Museum, which has a research library. The library has information on 7,000 family names, manuscripts, newspapers, microfiche as well as books, manuscripts, and scrapbooks. There is a search feature for their online collections at <https://crookcountyhistorycenter.catalogaccess.com/>

10 Bend Genealogical Society and Library—The Bend Genealogical Library has genealogical books and journals, both family genealogies and reference books. The society offers free genealogy mentoring to beginners.

11 Deschutes Historical Museum and Society—Deschutes Historical Museum and Society has a research library with genealogy files, photographs, maps, documents and copies of the *Bend Bulletin* 1917–2005. There is an online collection search feature at <http://deschuteshistory.pastperfectonline.com/>

12 Jefferson County Historical Society—The Jefferson County Historical Society holds events that are listed on the events tab of their website. The society also publishes the journal, *The Agate*, twice yearly. The historical society’s collection is currently in storage, waiting for a new museum building to be built near the Jefferson County Fairgrounds.

13 The Museum at Warm Springs—The Museum at Warm Springs exists “to preserve the culture, history and traditions of the three Tribes which comprise The Confederated Tribes of Warm Springs.” In addition to exhibits, there is a library/archive.

SPECIAL DISCOUNT
GFO Members receive
10% OFF
surplus books*
LIFE MEMBERS GET 50% OFF
SHOP NOW

*excluding GFO publications and E-News book of the week



GFO Education Committee Seeks Input

The GFO is dedicated to providing quality education to the genealogical community. It is part of our mission to “to inspire and empower every person to discover and engage with their family history.”

We provide free, live GenTalks to the public about ten times a year, and an annual free, week-long Open House featuring our Special Interest Groups and outside speakers on a variety of topics. In addition, we endeavor to bring one to two annual seminars, which are paid events.

As planning begins for next year's roster, the Education Committee is interested in your learning



objectives for 2024. We have devised a short, eight-question survey that we would love for you to fill out: **Education Survey**. The survey will be open through October.

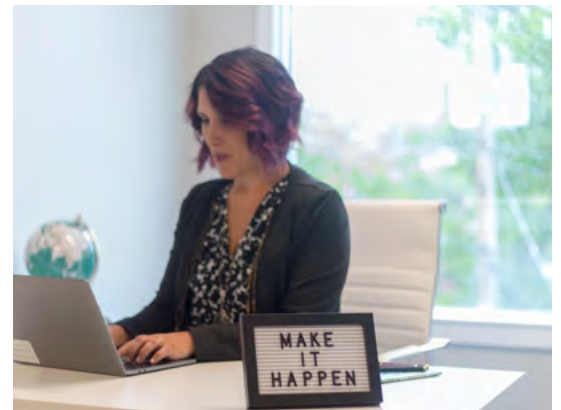
We also welcome volunteers to serve on the Education Committee, which currently

meets quarterly by Zoom. If you are interested or would like to know more, please contact Geoff Smith at education@gfo.org.

Volunteer Needed to Process Memberships

The Membership Committee is recruiting volunteers to assist with processing membership applications on a weekly basis. The time commitment is generally three to four hours a week but may be longer depending on the number of memberships received.

Volunteers need to be computer-savvy and able to enter data accurately. Training is provided. After training is completed and trainees are comfortable working by themselves, they will be scheduled one or two times a month. For further information, please send an email to membership@gfo.org, or call the library at 503-963-1932 to leave message for Jane McGarvin, Membership Chair.



Brick Wall? Our Problem Solvers Could Help!

Did you know we have some history detectives eager to help you break down your genealogy brick walls? Our Genealogy Problem Solvers group is designed specifically to help GFO Members with research challenges in the United States.

Several experienced researchers have volunteered to look over your genealogy problem. Beginners and intermediate researchers are encouraged to submit problems to them on the form at the bottom of the group's page: **Genealogy Problem Solvers**.

Or, please bring your brick wall to GPS by attending the January 20, 2024, kick-off meeting. We consider all requests and are actively selecting projects for the coming year.

GPS meets the third Saturday of most months from 9:30 to 11:30 a.m. Register to attend meetings at **Genealogy Problem Solvers**.



Genealogical Forum of Oregon GenTalk



Three Free Websites for Researching Your Scandinavian Ancestry



21 Oct 2023
2:30 pm PT



Featuring
Savannah Larson

Free registration at [gfo.org / gentalk](https://gfo.org/gentalk)



GFO DISCOVER YOUR HERITAGE

HOW TO WRITE A
FAMILY HISTORY BOOK
with *David Bruey*
author of *The Ancestry of Amelia Marilla Morley*

DECEMBER 16 ♦ 2:30 PM PT
Free Registration at gfo.org/gentalk



Online Events for October

Monday, October 2

RootsMagic

10 a.m.–12 p.m.

[SIGN UP >](#)

Wednesday, October 4

Learn & Chat

10 a.m.–12 p.m.

[SIGN UP >](#)

Saturday, October 7

Virginia Roots and Vines

10 a.m.–12 p.m.

[SIGN UP >](#)

German Group

1–3 p.m.

[SIGN UP >](#)

In October, “Coming From the East – Resources to research the ‘Volksdeutsche’” will be presented by speaker is Edie Adams, well-known throughout the international German genealogy community. Her presentation is a study of the records she needed to follow the trail of her ancestors who found themselves on the wrong side of the borders prior to and during WW2.

Sunday, October 8

The Writers’ Room

2:30–4 p.m.

[SIGN UP >](#)

Tuesday, October 10

Board Meeting

6:30–8:30 p.m.

All GFO members are invited to attend. To receive a link to this online meeting, or request an agenda item, send an email at least 24 hours in advance to president@gfo.org.

Wednesday, October 11

Great Lakes Interest Group

1:30–3 p.m.

[SIGN UP >](#)

Thursday, October 12

Access GFO Resources

10 a.m.–12 p.m.

[SIGN UP >](#)

The Q Review

6–7 p.m.

[SIGN UP >](#)

We will discuss Karen Stanbary’s article, “A Charming Scoundrel and a Tragic Victim – Charles Mapes and Maggie McBurney of Rock Island County, Illinois: Biological Parents of Myrtle Eva (Porter) Dewein,” NGSQ 111 (Jun 2023), p. 85–110.

Sunday, October 15

Family Tree Maker

1–3 p.m.

[SIGN UP >](#)

French Canada SIG

3:30–5:30 p.m.

[SIGN UP >](#)

Wednesday, October 18

DNA Q&A: The Basics

1–3 p.m.

[SIGN UP >](#)

Irish Group

6–7:30 p.m.

[SIGN UP >](#)

Saturday, October 21

Genealogy Problem Solvers

9:30–11:30 a.m.

[SIGN UP >](#)

African American Ancestry

12–2 p.m.

[SIGN UP >](#)

In October, the speaker is Joseph Roby, and his talk is “The Enslaved at Oakley & Beyond Project: How and Why a Descendant of Enslavers Is Researching Enslaved Persons.”

GenTalk: Three Free Websites for Researching Your Scandinavian Ancestry

2:30–3:30 p.m.

[SIGN UP >](#)

Do you have ancestors in Sweden, Norway or Denmark? You’re in luck! Each of these countries offers robust national archive websites with many tools to help the everyday genealogist.

Saturday, October 28

DNA Advanced

9 a.m.–12 p.m.

[SIGN UP >](#)



GFO Stars

August

Cat Cope Arnold

Cat came in four and five days a week to scan volumes prior to Giving Tuesday 2021. Once volumes 40-56 and 60 were completed, each book being 500 pages, she continued with the affidavit books. When she finished all 21 affidavit books, she started with book 16 of the marriage books which had



been indexed many years prior. She has scanned through volume 23 and most of 24. Thanks Cat!

September

Susan Bowmer

Susan is a new volunteer with GFO. She has trained as a Research Assistant but doesn't have an assigned shift. She has been filling in when others go on vacation and on short notice for illnesses. She's also been coming in to help with the rearrangement of the microfilm cabinets, cleaning off old sticky labels and getting new holders affixed to the cabinets. The new holders allow content labels to be changed as our collection



grows. Thank you, Susan!



Registration for Rogue Valley Genealogical Society Interest Groups. All times are Pacific Time.

October 9, 2023
2–3:30 p.m.
Colonial America

October 10, 2023
11 a.m.–12 p.m.
German
1:30–3 p.m.
Family Tree Maker

October 11 2023
10:30 a.m.–12 p.m.
Genetic Genealogy
1:30–3 p.m.
Great Lakes

October 12, 2023
6–7:30 p.m.
Genealogy
Newbies

October 13, 2023
1:30–3 p.m.
Irish

October 18, 2023
10:30 a.m.–12 p.m.
Let's Talk Genealogy Roundtable



GFO Special Interest Groups

SIG meetings occur virtually in Pacific Time. They are open to the public. Learn more about our SIGs at our [SIG page](#).

AFRICAN AMERICAN GROUP

Led by Janice Sellers
african_american@gfo.org

BRITISH GROUP

Led by Duane Funk
uk@gfo.org

DNA – Advanced

Led by Tim Janzen
dna@gfo.org

DNA Q & A – The Basics

Led by Lisa McCullough
dna_qa@gfo.org

FAMILY TREE MAKER

Led by Agnes Zueger, Johnna Waldon,
 and Joyce Grant-Worley
ftm@gfo.org

FRENCH CANADA GROUP

Led by Robert Dupuy, Laura Mitchell,
 and Bob LaMarche
frcan@gfo.org

GENEALOGY PROBLEM SOLVERS

Led by Katie Daly
gps@gfo.org

GERMAN GROUP

Led by Tia Cobb
german@gfo.org

GREAT LAKES

Led by Kim Thurman
greatlakes@gfo.org

IRISH GROUP

Led by Karen Hubbard, Peg Kenaga,
 and Erinn Sears
irish@gfo.org

ITALIAN GROUP

Led by Stephanie Silenti
italian@gfo.org

LEARN & CHAT

Led by Sandy Alto
learnandchat@gfo.org

THE Q REVIEW

Led by Alexa Waddle
qreview@gfo.org

ROOTSMAGIC

Led by Barry Wolff
rootsmagic@gfo.org

VIRGINIA ROOTS & VINES

Led by Judi Scott and Carol Surrency
virginia@gfo.org

WRITER'S ROOM

Led by Geri Auerbach, AG®
writers@gfo.org




Get Help at
PMUG Clinic

Every Tuesday Evening
6:00 – 7:30 pm on Zoom

- Get Free Help for your Macintosh, iPhone, iPad, iPod or Apple Watch
- For info on how to attend, contact us at:

info@pmug.org





Treasurer's Report

Contact: treasurer@gfo.org

JULY 2023 INCOME

Contributions	\$ 105.63
Memberships	\$ 2,563.00
Education	\$ 0.00
Library & Research	\$ 119.14
Book Sales & Misc. Income	\$ 594.50
Interest & Dividends	\$ 930.64
Total	\$ 4,312.91

JULY 2023 EXPENSE

Administration	\$ 3,242.21
Publications	\$ 29.99
Education Fees	\$ 125.00
Facilities & Equipment	\$ 5,881.29
Library & Research	\$ 991.98
Total	\$ 10,270.47

Net Income for the Month	\$ -5,957.56
Year-to-Date Net Income	\$ -5,957.56

Donor-restricted Donations	\$ 38,498.10
Unrealized Gains	\$ 11,753.56
Endowment Donation	\$ 0.00
Total Adjustments	\$ 50,251.66

AUGUST 2023 INCOME

Contributions	\$ 211.63
Memberships	\$ 3,698.00
Education	\$ 280.00
Library & Research	\$ 139.40
Book Sales & Misc. Income	\$ 1,325.35
Interest & Dividends	\$ 1,060.73
Total	\$ 6,715.11

AUGUST 2023 EXPENSE

Administration	\$ 1,535.34
Publications	\$ 29.99
Education Fees	\$ 125.00
Facilities & Equipment	\$ 5,209.93
Library & Research	\$ 2,087.43
Total	\$ 8,987.69

Net Income for the Month	\$ -2,272.58
Year-to-Date Net Income	\$ -8,230.14

Donor Restricted Donations	\$ 3,711.00
Unrealized Losses	\$ -5,747.62
Endowment Donation	\$ 0.00
Total Adjustments	\$ -2,036.32