



# The Forum Insider

Newsletter of the Genealogical Forum of Oregon

Volume 31, Number 6

February 2020

## Archiving Help Wanted!

# VOLUNTEER



GFO is looking for a couple of extremely detail-oriented individuals to create a complete archive copy of GFO's *Bulletin*.

We have shelf copies of our journal going back to the 1950s, and we have an archive file of "original" unbound material.

**The Problem:** There are pages in the bound copies that are not in the archive file, and we've discovered that there are pages that are missing from both.

**What's Needed:** One master copy that includes all pages we have and a list of missing pages.

**Project Deadline:** May 15, 2020.

We already have a volunteer committed to going to Salt Lake City in May who will look at copies of the *Bulletin* held by the Family History Library to see if the missing pages can be found and copied.

We need your help to make sure this volunteer is ready for their trip to Salt Lake City.

This would be a perfect **job for two people** to do together, as it can be challenging to turn and compare the pages in both the shelf copies and the archived files without an extra pair of hands.

The job must be done at the GFO but can be done on your schedule. If this sounds like a project you'd be willing to tackle, please contact Laurel Smith at [library@gfo.org](mailto:library@gfo.org).

## GFO Open House Presents

### 42 Free Events in March 2020

It's time for a genealogy conference in your backyard which doesn't cost a dime! Save these dates for the 2020 GFO Genealogy **Open House: March 13th–22th**.

Over these 10 days the library is free to the public and everyone is invited to all classes.



Of particular note, we have an Evening with Special Guest John Schmal on Mexican Ancestry, a Beginners Day, DNA Day, Software Day, and Irish Day.

Check out the full schedule printed in this Insider and on our calendar. Additional information is available at [gfo.org/open-house](http://gfo.org/open-house).

Tell your friends about GFO's New Member Special offered during the Open House! New one-year memberships will receive 14 months, and two-year memberships will receive 29 months.

## You Did it! GFO's Annual Appeal

# Thank You

We can't thank you enough! We made our fundraising goal! As this newsletter goes to print, we are \$1,140 over our goal of \$28,500.

This helps tremendously to handle some unexpected cost increases that came in late last year.

We are so grateful to all of you!



## The Forum Insider

Newsletter of the Genealogical Forum of Oregon

[gfo.org](http://gfo.org) | [info@gfo.org](mailto:info@gfo.org)

2505 SE 11th Ave., Suite B18 Portland, OR  
97202-1061  
503-963-1932

### Library Hours

Mon, Tues, & Thurs..... 9:30 a.m.–5 p.m.  
Wednesday..... 9:30 a.m.–8 p.m.  
Friday & Saturday..... 9:30 a.m.–3 p.m.  
Sunday..... 12 noon–5 p.m.

### Contents

Archiving Help Wanted .....	1
GFO's 2020 Open House (FREE!).....	1
You Did It! GFO's Annual Appeal.....	1
2020: The Year of DNA.....	2
Open House Class Schedule .....	FLYER
Spring Seminar Speaker Update .....	3
Board Candidates Call .....	3
GFO Stars.....	3
Spring Seminar .....	FLYER
Nominations Call .....	4
Petticoats Tea.....	4
GenTalk: Excel Intro .....	FLYER
DNA Resources from MyHeritage .....	5
PMUG College .....	5
Treasure's Report.....	6
Special Interest Groups .....	6
Calendar .....	Back cover

Submissions to *The Forum Insider*: Please send comments, corrections, news, short success stories, and announcements to LauraDenise White and Ruth Summers, editors, at [insider@gfo.org](mailto:insider@gfo.org), or leave messages at the GFO desk, 503-963-1932. Please provide submissions two months ahead of time for inclusion in the next publication's issue.

## 2020: The Year of DNA

What's the number one topic in genealogy circles? It's got to be DNA. We're learning so much more than many of us ever expected.

If you want to know more than just a ballpark estimate of where your ancestors came from, it can get a bit complicated.

On April 4th and 5th, we're bringing the accomplished genetic genealogy educator Karen Stanbary to Portland for our two-day [Spring Seminar](#).

To get the most out of her lectures, we're offering you a chance to bone up on DNA basics and relevant tools between now and then!

- **January 25th:** DNA Advanced Group with Tim Janzen, 9 a.m. to Noon
- **February 5th & March 4th:** DNA Beyond the Basics with Lisa McCullough, 1 to 3 p.m.
- **February 15th:** GenTalk Intro to Excel for Genealogy with Kendra Blumberg, 2 p.m. to 3 p.m.
- **February 19th:** DNA The Basics with Lisa McCullough, 1 to 3 p.m.
- **February 22nd:** DNA Beginners with Emily Aulicino, 9 a.m. to Noon
- **February 23rd:** Excel for Genealogy Workshop with Mary Kircher Roddy, 9 a.m. to 12:30 p.m. ([Paid registration required](#), 30 seats maximum.)
- **March 14th:** DNA Day at GFO Open House with **five** classes to choose from!
- **March 18th:** Jumpstart Your DNA Discoveries with Lisa McCullough, 1 to 3 p.m.
- **March 22nd:** Excel Spreadsheet Basics with Kendra Blumberg, 9:30 to 10:30 a.m.

Except for the February 23rd workshop, all classes are free and open to the public. Drop in and join us!



# 2020

# Genealogy OPEN HOUSE

*10 days  
40 free events*

## March 13-22

## GENEALOGICAL FORUM OF OREGON

**Special Guest:**  
John Schmal, author,  
genealogist, historian,  
& member of the  
Society of Hispanic  
Historical & Ancestral  
Research, will lecture  
on Mexican-American  
heritage.



March 18, 6-8 p.m.



- **Learn How to Find Your Ancestors!**
- **March 13 is Beginners Day**
- **March 14 is DNA Day**
- **March 15 is Software Day**
- **March 17 is Irish Day!**
- **40 FREE Family History Classes!**
- **Full Library Access**
- **Everyone is Welcome!**



FRIDAY MARCH 13 **BEGINNERS DAY**

**10am - Beginning Genealogy Part 1**

Learn the basic steps to get started!—**Laurel Smith**

**1:30pm - Beginning Genealogy Part 2**

Start with the U.S. census.—**Laurel Smith**

SATURDAY MARCH 14 **DNA DAY**

**9am - DNA Companies, Likenesses & Differences**

23andMe, AncestryDNA, FamilyTreeDNA, & MyHeritage

—**Tim Janzen**

**10:30am - Three Major Test Types**

Y-DNA, mtDNA, & atDNA with X-DNA—**Lisa McCullough**

**1pm - Finding Common Ancestors**

Find common ancestors with DNA tests!—**Emily Aulicino**

**2:30pm - Using DNA Tools with Caution**

Learn about advantages and cautions.—**Emily Aulicino**

**4pm - Beginning GEDmatch**

Compare your DNA results with others.—**Tim Janzen**

SUNDAY MARCH 15 **SOFTWARE DAY**

**9:30am - Reunion Software**

Genealogy Software for Mac—**Janet DeVore**

**11am - Roots Magic**

Family History Software—**Kendra Blumberg**

**12:30pm - Family Tree Maker**

Genealogy Software for Mac—**Joyce Grant-Worley and**

**Laurel Smith**

**2pm - Legacy Family Tree**

Genealogy Software for Windows—**Kendra Blumberg**

**3:30pm - French Canada**

Learn about Acadia and the Acadian expulsion.

—**Bob LaMarche**

MONDAY MARCH 16

**9am - U.S. Federal census**

Improve your Research—**Geri Auerbach**

**10:30am - Find A Grave**

Cemetery Records—**Laurel Smith**

**1pm - American Land Records**

Finding first landholders—**Gerry Lenzen**

**3pm - Oregon Land Claim Records**

Find genealogical data in land records—**Gerry Lenzen**

TUESDAY MARCH 17 **IRISH DAY**

**10am - Irish Surnames**

Track down your Irish family surnames.—**Karen Hubbard**

**11:15am - Searching for 2nd Great-Grandfather John Spillan**

From first clues to results—**Patricia Delich**

**2pm - Lost Irish Records**

How to research without them—**Kate Eakman**

**3:15pm - Irish Online Research**

Find Irish resources on the web.—**Janice Sellers**

WEDNESDAY MARCH 18 **OPEN UNTIL 8:00 PM**

**9:45am - When to Hire a Professional**

There are times when we need some help.—**Kate Eakman**

**11:30am - Virginia Special Interest Group**

—**Judi Scott**

WEDNESDAY MARCH 18 - continued

**1pm - Jumpstart Your DNA Discoveries**

A beginners guide to understanding DNA—**Lisa McCullough**

**3:30pm - Make the Most of GFO's Resources**

What's available & how to access it.—**Laurel Smith**

**An Evening with Special Guest John Schmal**

**6pm - Explorations in Mexican Genealogy**

Genealogical Research

**7:15pm - Indigenous Mexico: Past and Present**

Indigenous history of Mexico

THURSDAY MARCH 19

**10am - Multnomah Co. Library Resources**

Learn about their special collections

—**Ross Betzer and Jan Chciuk-Celt**

**11:30 - Obituaries: A Goldmine of Information**

They're valuable—so write your own!—**Darrell Gulstrom**

**1pm - British Research**

The basics of genealogical research in the UK.—**Duane Funk**

**3pm - Military Research/Civil War Records**

What can you expect to find?—**Duane Funk**

FRIDAY MARCH 20

**10am - Intro to FamilySearch**

Millions of records to explore—**Nanci Remington**

**11:30 - Cite This: Citing Your Sources in Genealogical Research**

The "whys" and "hows"—**Janice Sellers**

**1pm - Using Ancestry**

Searching and saving what you find—**Nanci Remington**

**2:30 - Mayflower Descendants**

Learn about Oregon Society of Mayflower Descendants and

its 400th anniversary.—**Beth Lambright**

SATURDAY MARCH 21

**9:30am - Genealogy Problem Solvers**

Volunteers tackle a frustrating brick wall.—**GPS Team**

**12pm - Online Black Historical Newspapers**

The historical role of black newspapers—**Janice Sellers**

**2pm - General Membership Meeting**

Learn who's running for the GFO Board or nominate yourself.

**2:15pm - GenTalk: PERSI**

Learn to tap the world's largest index of periodicals.

—**Kristin Parks**

SUNDAY MARCH 22

**9:30am - Microsoft Excel for Genealogy**

Learn how to get the most from this spreadsheet program.

—**Kendra Blumberg**

**11am - Italian Special Interest Group**

Learn about Italian research.—**Stephanie Silenti**

**1pm - Evernote**

Organizing your genealogy research.—**Dale Deatherage**

**3pm - Fraternal Organizations**

The many records they hold.—**Dale Deatherage**

[gfo.org/openhouse](http://gfo.org/openhouse)





## Spring Seminar DNA Speaker Update

You may remember that in October we announced that Blaine Bettinger would be our speaker at our next Spring Seminar. Later, Blaine contacted us apologizing profusely. He'd double-booked himself and could not come to Portland after all. Naturally, we were disappointed.

We know how important DNA has become in genealogy and wanted to keep this important topic. We were thrilled to learn that an exceptionally accomplished DNA expert is available.

We're proud to announce that Certified Genealogist® Karen Stanbary is coming to speak April 4th and 5th to help you Solve Your Puzzles with DNA. More information is available at [karenstanbarygenealogy.com](http://karenstanbarygenealogy.com).

Karen is an author and national lecturer focusing on using genetic evidence correlated with documentary evidence to solve genealogical brick walls. Her genealogical practice specializes in Midwestern U.S., Chicago, Mexican research, complex problem-solving, unknown parentage, and DNA analysis.

She is a coordinator and faculty member at GRIP, IGHR, and SLIG. She received the NGSQ Award for Excellence for her complex evidence case study incorporating traditional documentary research and autosomal DNA analysis published in the June 2016 issue of the *National Genealogical Society Quarterly*.

Registration is now open for our Spring Seminar at <https://gfo.org/learn/spring-seminar-2020.html>.

---

## Call for GFO Board Candidates

*Vince Patton, GFO President*

You've heard us say it many times: GFO is all-volunteer. We depend on so many people to keep the library open and our educational opportunities hopping.

Would you be interested in serving on our Board of Directors?

Our board members meet once a month to guide overall operations and make sure money is spent wisely.

This year we have three positions to elect: President, Secretary, and Director-at-Large.

If you'd like to declare your candidacy, please email a statement of interest and a brief bio of yourself and relevant experience to [secretary@gfo.org](mailto:secretary@gfo.org).

The deadline for declaring candidacy is Saturday, March 21st at 2:15 p.m. The term, if elected, runs from July 1, 2020 to June 30, 2022.

---

## GFO's January Stars Manuscripts Volunteers

This month the GFO Board is proud to select *four* volunteers as our GFO Stars of January.

Anita Lustenberger, Bonnie Randolph, Cat Cope-Arnold, Ruth Summers have contributed hundreds of hours over several years to help with one goal—creating digital files from 350,000 pages of donated personal papers collected by the GFO.

They sort, remove staples, unfold, and scan these papers so that one researcher's life work can be available to others.

Because of their dedication, there is an end in sight for this project!

Thank you Anita, Bonnie, Cat, and Ruth!





# Solve Puzzles with DNA

featuring nationally-respected genetic genealogy educator



## KAREN STANBARY

APRIL

4 & 5

Image: Dreamstime.com 22510350 Rolffimages

## Genealogical Forum of Oregon **Spring Seminar**

### Saturday, April 4

10 a.m. - 4:30 p.m.

Center for Self Enhancement (SEI)

### SOLVE PUZZLES WITH DNA EVIDENCE

Learn how to manage and interpret DNA evidence, then incorporate into your existing documentary research. Receive tips from a retired Licensed Clinical Social Worker on managing conversations about unexpected DNA results.

### Sunday, April 5

9:30 a.m. - noon

Genealogical Forum of Oregon

### SOLVING ADVANCED PUZZLES WITH DNA

More complex puzzles require more complex DNA evidence analysis. Deepen and expand your skills.

**Karen Stanbary, CG®, MA, LCSW**, is an author and national lecturer focusing on topics related to using genetic and documentary evidence to solve genealogical brick walls.

Karen is a coordinator and faculty member at three national week-long institutes: GRIP (Chromosome Mapping), IGHR (Intermediate DNA), and SLIG (Meeting Standards Using DNA Evidence). She also received the NGSQ Award for Excellence for her complex evidence case study incorporating traditional research and DNA analysis in the June 2016 issue of the National Genealogical Society Quarterly.

Karen holds the credential Certified Genealogist from the Board for Certification of Genealogists where she serves as a Trustee and is chair of the standing DNA Committee.

Register Online  
[gfo.org/dna](http://gfo.org/dna)

2505 SE 11th Ave. #B18, Portland, OR | 503-963-1932

## SATURDAY SEMINAR DETAILS

### Location

Center for Self Enhancement (SEI)  
3920 N. Kerby Ave. (x street N. Failing)  
Portland, Oregon

### Time

10 a.m. to 4:30 p.m. • Saturday, April 4  
Break for lunch 12:30 - 1:30 p.m.

### Seminar Features

Book sales from Heritage Quest & the GFO  
Raffle with great prizes  
Coffee, tea and snacks throughout the day  
Syllabus: free electronic copy included

### Lunch

Bring your own or order from GG's Deli. A  
lunch selection form will be sent with your  
confirmation. Sack lunch is \$10, and includes  
your choice of sandwich and side. Add \$1 for  
gluten-free bread.

## SUNDAY PROGRAM DETAILS

### Location

Genealogical Forum of Oregon Library  
2505 SE 11th Ave. #B-18  
Portland, Oregon

### Time

9:30 a.m. to noon • Sunday, April 5

– **Sunday Event Limited to 60** –

### Payment and Refund Details

Register and pay online at [gfo.org/dna](http://gfo.org/dna).

– – OR – –

Complete registration form below and mail with  
your check to: **GFO Spring Seminar, 2505 SE  
11th Ave. #B-18, Portland, OR 97202-1061.**

For cancellations received after Mar. 29, 2020,  
refunds will be subject to a \$10 cancellation fee.  
Lunches must be ordered by noon on Apr. 1, 2020.

**Lunch fees are non-refundable if canceled after  
noon on Apr. 1, 2020.**

## REGISTRATION FORM – OR – *register online @ [gfo.org/dna](http://gfo.org/dna)*

You may sign up for Saturday, Sunday, or both sessions. One form per attendee, please.

Circle price selected, enter amounts on the right, and total at the bottom.

Name \_\_\_\_\_ Member No. \_\_\_\_\_

Email \_\_\_\_\_ Telephone No. \_\_\_\_\_

Payment Enclosed

Paid online at [PayPal.com](http://PayPal.com) using the email address [payments@gfo.org](mailto:payments@gfo.org).

SPRING SEMINAR WITH KAREN STANBARY Select one or both sessions	EARLY REGISTRATION By February 29, 2020		REGISTRATION After February 29, 2020		AMOUNT
	Member	Non-Member	Member	Non-Member	
	Price	Price	Price	Price	
<b>SATURDAY PROGRAM SOLVE DNA PUZZLES</b>	\$45	\$50	\$50	\$55	
Lunch from GG's Deli (order/cancel by 4/1)	\$10	\$10	\$10	\$10	
Add gluten-free bread	\$1	\$1	\$1	\$1	
Electronic copy of syllabus is free with your registration. Optional paper copies will be available for \$3 at the door.					
<b>SUNDAY PROGRAM ADVANCED DNA</b>	\$25	\$30	\$30	\$35	
Electronic copy of syllabus is free with your registration. Optional paper copies will be available for \$3 at the door.					
2505 SE 11th #B18, Portland, OR 97202 • <a href="http://gfo.org/dna">gfo.org/dna</a>				<b>TOTAL FOR ALL</b>	





## Nominations Requested for GFO Hall of Fame



The Genealogical Forum of Oregon has established the Hall of Fame Award as a way to honor members who have performed outstanding service and shown exceptional leadership skills on behalf of the Forum. The award

is limited to one person per year, except in the case where a pair of members has worked together.

A nomination may be made by any Forum member, and the recipient will be selected from the panel of nominations by a majority vote of the Board of Directors. The recipient must have a well-documented history of service, leadership, and accomplishment in more than one facet of the Forum over a significant period of time.

### Procedure

Any member may nominate another member for the award in writing. A nomination must be submitted to the Forum President and should include:

1. Name and member number;
2. List of services, activities, positions, and accomplishments;
3. A narrative describing the nature of their work in terms of its importance to the success of the Forum; and
4. A short biography.

All areas of service will be examined and may include, but not be limited to, serving as an officer or Board member, chairing a major committee, special interest group, research committee, or data development committee, serving as a research assistant, or performing other responsibilities. Other important activities to present might include publishing their own books, teaching, giving presentations, and developing publications or electronic GFO products such as on-line databases or CDs. The Board will review the information on all nominees and may consider nominations carried forward from a previous year.

The Board will select the one which in their judgment is the most deserving. The Board may decline to select

a recipient if the available nominations are found to be inadequate or if no nominations are received. Information submitted for nominees who are not selected for the award will be retained by the Secretary for possible use in future years by the Board.

An honorary life membership is given to the recipient. An official biography will be prepared from the data submitted and will be presented to the recipient for verification prior to the publication of the award.

### Schedule

April: Nominations presented to the Board.

May: Board selects a recipient, prepares the plaque and orders a life member badge.

June: Award presentation at the Annual Membership Meeting.

July: Publication of official biography in the newsletter.



## Saturday, February 22, 2020

The West Linn Historical Society and the Friends of McLean House Park and House present this historical fashion show and tea event. McLean House; West Linn, Oregon. Tea begins at 11am and 2pm.

This event usually sells out in the blink of an eye, so be sure to keep your eyes peeled for ticket sales here:

[http://westlinnhistory.org/West\\_Linn\\_Historical\\_Society/Events.html](http://westlinnhistory.org/West_Linn_Historical_Society/Events.html)





# GENTALK @ GFO

## Computer Lab: **Intro to Excel® for Genealogy**

Taught by Kendra Blumberg



**Sat., Feb. 15  
2 - 3 p.m.**

**Free & open to the public**

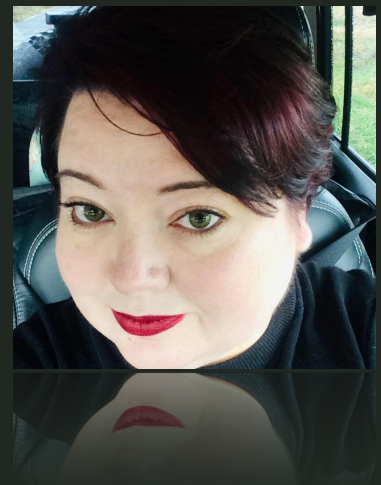
Get ready for the upcoming 3-hour, hands-on Excel® for genealogy workshop with Mary Kircher Roddy on Feb. 23 at the GFO Library!

Sometimes having too much data is as confusing as having too little, and it is easy to get overwhelmed. Spreadsheets are a powerful tool for analyzing your data, organizing your research and presenting your conclusions. But as with any tool, you have to know how to use it to get results.

Please bring your laptop with Excel® loaded. Otherwise, a limited number of computers are available for free reservation at [gfo.org/computer](http://gfo.org/computer).

GENEALOGICAL FORUM OF OREGON  
2505 SE 11th Ave. B-18, Portland, Oregon  
[gfo.org](http://gfo.org) | 503.963.1932

**Kendra Blumberg**, a GFO member and volunteer, has researched her family history for decades, and has found ample opportunity to learn how to make spreadsheets work for her. Kendra is Microsoft-certified in Excel®, uses the program professionally, and is eager to teach beginners how to get started using it for genealogy.





## DNA Resources from MyHeritage

*Daniel Horowitz, Genealogy Expert*

As you know, we recently launched [MyHeritage Education](#), our new online resource center.

I'm pleased to share this month's update! I hope you'll find it useful and can help us promote all the new articles, how-to videos, and webinars, covering a variety of topics for everyone from beginners to advanced genealogists.

In keeping with MyHeritage's commitment to spreading knowledge of genealogy to the whole world, this week we released the Education site in four more languages to reach a total of ten. The new languages are [Finnish](#), [Spanish](#), [Danish](#), and [Portuguese](#) (Brazil)!

We have created a flyer to promote the Education site. Please help us promote the site by downloading it from the [Downloadable resources](#) and distributing it to every place and platform you consider appropriate.

### Webinars

- [I Received DNA Matches, Now What?](#)
- [Genealogy for Beginners: Start Your Online Family Tree](#)
- [How DNA Testing Can Reveal Your Ethnic Roots](#)
- [Find Your Immigrant Ancestors AND Their Relatives in the New York Passenger Arrival Records](#)
- [Understanding DNA Matching Technology](#)
- [MyHeritage Mobile App: New Features](#)
- [Discover Your Family in School Yearbooks](#)

### Articles

- [Developing a DNA Testing Plan](#)
- [4 Common Myths About DNA Testing](#)
- [What Is a Polygenic Risk Score?](#)
- [How to Create a Family Tree Chart or Book on MyHeritage](#)

What can you do with this information? Stay up to date on new features, expand your knowledge of MyHeritage, and help us promote the new content on your social channels.



PMUG College

## PMUG Free February Classes at GFO!

The Portland Macintosh Users Group presents a new series of classes at the GFO library. GFO members who use Mac computers and Apple's mobile devices are invited to attend these friendly and informative classes. Non-members can attend for \$10 per class.

### Traveling the Web on Browsers and Email

**Wednesday February 12, 2020 at 6:00–7:45 p.m.**

- How to create and manage bookmarks
- Email on the Mail program
- Email on a web browser
- Find out how iCloud works
- Discover how iCloud syncs



### Mac Photos 101

**Wed, February 26, 2020 at 6–7:45 p.m.**

- Post your photos online to share with your friends. (Facebook, Instagram, Flickr, and others)
- Retrieve and modify photos from websites to utilize in projects.
- Automatically sort your photos with the Library's Moments, Collections, and Years viewing modes.
- Use Faces & Places to help organize your photos.
- Create custom desktop backgrounds from sets of your own photos.

Registration is required. Call 503-228-1779 or email [college@pmug.org](mailto:college@pmug.org).

Bring your Mac or iPad to participate with instruction. If you would like additional information for attending this class, please email us at [college@pmug.org](mailto:college@pmug.org).



## Treasurer's Reports

By Erin Randall

<b>November 2019 Income</b>	<b>\$ 11,721.04</b>	<b>December 2019 Income</b>	<b>\$ 36,973.35</b>
Contributions & Investments	\$ 9,454.89	Contributions & Investments	\$ 31,730.86
Memberships	\$ 1,304.00	Memberships	\$ 3,316.34
Seminars & Other Programs	\$ 37.00	Seminars & Other Programs	\$ 920.00
Library & Research	\$ 272.44	Library & Research	\$ 203.15
Book Sales & Publications	\$ 652.71	Book Sales & Publications	\$ 803.00
<b>November 2019 Expenses</b>	<b>\$ 6,735.95</b>	<b>December 2019 Expenses</b>	<b>\$ 7,125.78</b>
Administration	\$ 1,069.62	Administration	\$ 2,080.88
Education Programs	\$ 185.89	Education Programs	\$ -
Facilities & Equipment	\$ 4,915.76	Facilities & Equipment	\$ 4,915.76
Library & Research	\$ 564.68	Library & Research	\$ 129.14
<b>Net Income for the month</b>	<b>\$ 4,985.09</b>	<b>Net Income for the month</b>	<b>\$ 29,847.57</b>
<b>Year-to-Date Net Income</b>	<b>\$ 8,849.55</b>	<b>Year-to-Date Net Income</b>	<b>\$ 38,697.12</b>

## Special Interest Groups

<http://gfo.org/learn/special-interest-groups/>

### African American

3rd Saturdays, 12–2 p.m.

Led by Janice Sellers.

[African\\_American@gfo.org](mailto:African_American@gfo.org)

### British Group

4th Saturdays, 1–3 p.m.

Jan., Mar., May, Sept.

Led by Duane Funk.

[UK@gfo.org](mailto:UK@gfo.org)

### DNA – Beginners

4th Saturdays, 9 a.m.–12 p.m.

Feb., May, Aug., & Nov.

Led by Emily Aulicino.

[DNA@gfo.org](mailto:DNA@gfo.org)

### DNA – Advanced

4th Saturday, 9 a.m.–12 p.m.

Jan., Apr., July, & Oct.

Led by Emily Aulicino.

[DNA@gfo.org](mailto:DNA@gfo.org)

### DNA – Q & A

1st and 3rd Wednesdays, Sept.–June,  
1–3 p.m.

Led by Lisa McCullough.

[DNA\\_QA@gfo.org](mailto:DNA_QA@gfo.org)

### Family Tree Maker Beginners

3rd Sundays, 1–3 p.m.

Jan., Apr., Jul., Oct.

Led by Laurel Smith.

[FTM@gfo.org](mailto:FTM@gfo.org)

### Family Tree Maker Users' Group

3rd Sundays, 1–3 p.m.

Feb., Mar., Feb., May, Aug., Nov.

Led by Joyce Grant-Worley.

[FTM@gfo.org](mailto:FTM@gfo.org)

### French Canada Group

3rd Sundays, 3:30–5 p.m.

(no July or August meetings)

Led by Bob LaMarche.

[FrCan@gfo.org](mailto:FrCan@gfo.org)

### Genealogy Problem Solvers

3rd Saturdays (except July),

9:30–11:30 a.m.

Led by Katie Daly.

[GPS@gfo.org](mailto:GPS@gfo.org)

### German Group

1st Saturdays, 1–3 p.m.

Led by Mike Fernandez and Tia Cobb.

[German@gfo.org](mailto:German@gfo.org)

### Italian Group

1st Tuesdays, 10 a.m.–12 p.m.

Led by Stephanie Silenti

[Italian@gfo.org](mailto:Italian@gfo.org)

### Great Lakes Region

2nd Saturdays monthly (except Jul.,

Aug., Dec.), 9:30–11:30 a.m.

Seeking Leader.

[GreatLakes@gfo.org](mailto:GreatLakes@gfo.org)

### Irish Group

3rd Wednesdays, 6–8 p.m.

Feb., Apr., June, Aug., & Oct.

Led by Karen Hubbard. [Irish@gfo.org](mailto:Irish@gfo.org)

### Learn & Chat

1st & 3rd Weds, 10 a.m.–12 p.m.

Led by Jeanne Quan & Sandy Alto.

[LearnandChat@gfo.org](mailto:LearnandChat@gfo.org)

### Mexican Ancestry

2nd Fridays, Feb., Apr., June, and Oct.

11:30 a.m.– 1:30 p.m.

Led by Vincent Ramirez.

[SW@gfo.org](mailto:SW@gfo.org)

### Virginia Group

1st Saturdays, Sept.–June

10 a.m.–12 p.m.

Led by Judi Scott and Carol Surrency.

[Virginia@gfo.org](mailto:Virginia@gfo.org)

### Writers' Forum

2nd Saturdays, Sept.–May, 1–3 p.m.

Led by Peggy Baldwin.

[Writers@gfo.org](mailto:Writers@gfo.org)



*The Forum Insider*  
 Genealogical Forum of Oregon  
 2505 SE 11th Ave., Suite B-18  
 Portland, OR 97202-1061

ADDRESS SERVICE REQUESTED

Non-Profit Organization US POSTAGE PAID Portland Oregon Permit No. 745
---



**February 2020**

**GFO Calendar**

[gfo.org/calendar](http://gfo.org/calendar)

~~~~~ February ~~~~~			~~~~~ March ~~~~~		
Sat 02/01	10 a.m.–12 p.m. 1–3 p.m.	Virginia Group German Group	Sun 03/01	9:30 a.m.–12 p.m.	Library Work Party-Manuscripts
Sun 02/02	9:30 a.m.–12 p.m.	Library Work Party-Manuscripts	Mon 03/03	<b>Free to Non-Members</b>	<b>Open until 5 p.m.</b>
Mon 02/03	<b>Free to Non-Members</b>	<b>Open until 5 p.m.</b>	Tues 03/03	10–11:30 a.m.	Italian Group
Tues 02/04	10–11:30 a.m.	Italian Group	Wed 03/04	10 a.m.–12 p.m. 1–3 p.m.	Learn & Chat DNA Q&A: Beyond the Basics
Wed 02/05	10 a.m.–12 p.m. 1–3 p.m.	Learn & Chat DNA Q&A: Beyond the Basics	Sat 03/07	<b>Library Open until 8 p.m.</b>	
Sat 02/08	<b>Library Open until 8 p.m.</b>		Sun 03/08	9:30–11:30 a.m. 1–3 p.m.	Virginia Group German Group
Sun 02/09	9:30–11:30 a.m. 1–3 p.m.	Great Lakes Region Group Writers' Forum	Tues 03/10	9 a.m.–12 p.m.	Library Work Party
Tues 02/11	9 a.m.–12 p.m.	Library Work Party	Wed 03/11	6:10–8:10 p.m.	Board Meeting
Wed 02/12	6:10–8:10 p.m. 6–7:55 p.m.	Board Meeting PMUG College		6–7:55 p.m.	PMUG College
	<b>Library Open until 8 p.m.</b>			<b>Library Open until 8 p.m.</b>	
Fri 02/14	11:30 a.m.–1:30 p.m.	Mexican Ancestry Group			
Sat 02/15	9:30–11:30 a.m. 12–2 p.m. 2–3 p.m.	Genealogy Problem Solvers African American Group Gen Talk: Intro to Excel			
Sun 02/16	9 a.m.–12 p.m. 1–3 p.m. 3:30–5 p.m.	Library Work Party Family Tree Maker Users' Group French Canada Group	Wed 03/18	<b>Library Open until 8 p.m.</b>	
Wed 02/19	10 a.m.–12 p.m. 1–3 p.m. 6–8 p.m.	Learn & Chat DNA Q&A: The Basics Irish Group	Sat 03/21	2–2:15 p.m. 2:15–5 p.m.	General Membership Meeting More classes!
	<b>Library Open until 8 p.m.</b>		<b>Sun 03/22</b>	9:30 a.m.–4 p.m.	<b>Last Day of Open House</b>
Sat 02/22	9 a.m.–12 p.m.	DNA Beginners Group	Wed 03/25	6–7:55 p.m.	PMUG College
Sun 02/23	9 a.m.–12:30 p.m.	Workshop: Spreadsheets	Sat 03/28	<b>Library Open until 8 p.m.</b>	
Wed 02/26	6 p.m.–7:55 p.m.	PMUG College	Sun 03/29	1–3 p.m. 9 a.m.–12 p.m.	British Group Library Work Party
	<b>Library Open until 8 p.m.</b>				

**Fri 03/13 through Sun 03/22**      **GFO's OPEN HOUSE**  
**40 + Free classes!** See the full schedule with details at <https://gfo.org/openhouse>.