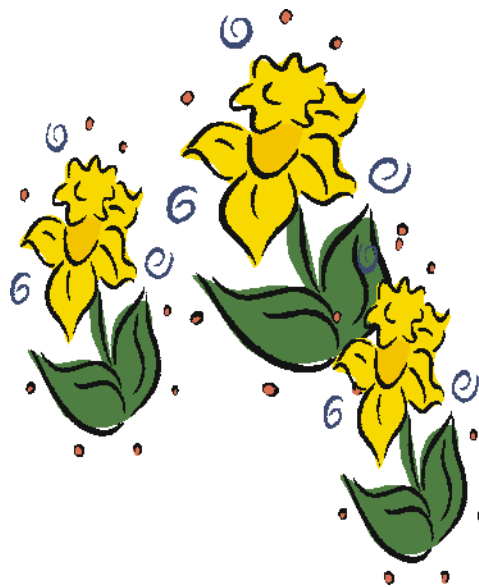


SPRING SEMINAR

**Announcing . . .
Ann
Carter
Fleming
CG, CGL**



**April 24, 2010
(new site)**

**Gateway Elks Lodge
near NE 100th & Glisan
Portland, Oregon
*See reverse for
directions to the site!***

Seminar Features

- **Book Vendor**
- **Genealogical Treasures**
- **Other Genealogical Societies**
- **GFO Surplus Book Sale**

Hosted by:

Genealogical Forum of Oregon

Check our website—www.gfo.org

The ABCs of Publishing Your Family History

- * **Organizing Your Research**
- * **Designing The Layout**
- * **Developing Your Style**
- * **Publishing The Book**



FLEMING SPRING SEMINAR SIGN-UP FORM April 24, 2010

Name _____ Member # _____

Phone? or Email _____

Address _____

City, State & Zip _____

MEMBERS

{ } \$38 if received **by April 18th** { } \$45.00 if received **after April 18th (no lunch)**

NON-MEMBERS: () \$43 **before April 18th** () \$50 **after April 18th (no lunch)**

{ } Lunch: \$12.00. Must be requested **by April 18th** TOTAL \$ _____

**MAKE CHECKS PAYABLE TO GENEALOGICAL FORUM OF OREGON
OR "GFO", PO BOX 42567, PORTLAND OR 97242-0567**

LUNCH

The buffet luncheon for \$12 will include two hot buffet items and three cold buffet items, plus potatoes, vegetable, rolls, & beverage. All coffee, tea, hot water included. Lunch in the Elks Dining Room with payment for lunch.

Space available for brown baggers, too.

REGISTRATION AT SEMINAR: 8-9 A.M. April 24, 2010 SATURDAY

First Class starts at 9:15 a.m.with a morning break, one-hour lunch, afternoon break, program ends about 3:30 p.m. Snacks & drinks at morning and afternoon breaks come with your price of admission.

TOPICS FOR THE SEMINAR

Ann Carter Fleming is an author, lecturer, researcher, and volunteer. She is the current past president of the National Genealogical Society and has served as president of the St. Louis Genealogical Society, and on the boards of the Missouri State Genealogical Association, APG, Friends of the Missouri Archives, and Friends of St. Louis County Library.

Ann is the author of the Organized Family Historian and co-author of Research in Missouri. She co-authored two family histories and is the author of two others. She has been a certified genealogist since 1994 and specializes in Missouri and Illinois research.

Organizing Your Research: The Overlooked Step: How do you know what information you have and what you still need if you are not organized? An important step to success is organizing your file folders, both electronic and paper.

Designing the Layout: What story do you want to tell? Who is the focus of this book? Do you want five copies or 200 copies? Do you want a hard or soft cover? As you make these decisions, the book's layout and design will develop into your personal publication.

Developing Your Style: Everyone has a preferred style whether dealing with a car, clothes, house, or books. Each author may choose from a variety of options on numerous subjects, thus developing their own style for this once-in-a-lifetime publication.

Publishing the Book: Publishing consists of gathering information, recording data, writing, and printing the manuscript. With a few hints from published authors, from fellow genealogists, and a passion for the story you want to tell, you can be a published author.

(NEW) SITE of SEMINAR:

Gateway Elks Lodge
711 NE 100th, Portland, Oregon

Driving Directions: ONE BLOCK NORTH OF 100TH & NE Glisan Street. On the block just south of Gateway Fred Meyers. or One- half -block away from Gateway Transit Center.

Taking I-84 East to location, exit on I-205, immediately take the Glisan exit (East). Travel to the traffic light, turn left, cross the viaduct go to the 2nd light. Turn left(North).

MAILING ADDRESS:

SPRING SEMINAR
Genealogical Forum of Oregon
PO BOX 42567

PORTLAND OR 97242-0567

More Info.....

PHONE: 503-963-1932

WEBSITE: <www.gfo.org>

LIBRARY HOURS

M, T, W, Th—9:30am-5pm

Sat 9:30am-3pm Sun Noon-5pm

The Forum Insider

VOLUME 21, ISSUE 6

FEBRUARY 1, 2010

**NEWSLETTER
of
THE GENEALOGICAL
FORUM OF OREGON**
www.gfo.org

1505 SE Gideon St
Near the Intersection of SE
Powell and SE 12th Ave
(Milwaukie Ave.)
503-963-1932

Mailing Address:
P.O. Box 42567
Portland, OR 97242-0567

**Monthly Membership
Meetings:**

Second Saturday of each
month at 2:00 p.m. with a
speaker.

Library Hours

Mon-Tues-Wed-Thurs:
9:30 to 5 p.m.
Saturdays: 9:30-3 p.m.
Sun: 12-5 p.m.
Closed Fridays

**SUBMISSIONS to the
INSIDER**

Feedback, corrections, news,
short success stories,
announcements to
Janis Bailey, editor, at
jbailey172@comcast.net
Or leave messages at GFO
desk 503-963-1932
Submissions by the 7th of the
month for inclusion in the
following month's issue

Opinions expressed in this
Newsletter are not necessarily
those of the Genealogical Forum
of Oregon.



WHAT'S INSIDE THIS ISSUE

SPRING SEMINAR FLYER	1-2
PRESIDENT'S MESSAGE	4
NEWS YOU CAN USE IN 2010	4
LIBRARY COLLECTION NEWS	5
INTEREST GROUP CONTACT LIST	5
"MOVING AHEAD" RELOCATION NEWS	6
THE DAR WEB SITE	6
FEBRUARY ALL NIGHTER	6
CONNIE'S CORNER	7
2011 WRITING CONTEST	8-9
NEW BOOKS	10

**THE GFO MEMBERSHIP FEES OF \$40 A YEAR
ARE 100% TAX DEDUCTIBLE
IN KEEPING WITH OUR 501 c (3) NON-PROFIT EDUCATION
STATUS**

PRESIDENT'S MESSAGE

Dear Friends,

February is here. Can spring be far away?

The mini-classes resume this month, check out the schedule. We hold another All Nighter on Saturday, Feb 20th. What? You don't know what an All Nighter event at the library is? From 6 pm to 6 am, you can join the other participants, picking out your spot, bringing your laptop or use one of ours. Search our aisles of books and other media to your heart's content. In the past, one member has driven up from Southern Oregon and searched all night while her husband slept in a nearby hotel. Snacks are provided during the evening, and a pizza feed starts at midnight. Our thanks to Julie Kidd who hosts this event.

New this year, our longtime member, Connie Lenzen, has agreed to host some Brick Wall solving sessions starting with the 4th Sunday of January. Call in and sign-up for one of the four one-half hour sessions, January through June of 2010. You can pay ahead or pay at the door (check or cash). It helps if Connie knows the problem ahead so she can do some preliminary research before you meet. Where are you stuck? She will confirm your reservation with a call.

Plan to come to the Monthly Programs on the 2nd Saturday of the months. Bring an interested friend. Be thinking about signing up for the Spring Seminar on April 24th with Ann Carter Fleming, CG,CGL, who will bring us topics on preparing to publish "the family history".

Thanks for your continued membership, and donations-both monetary and in book form. Many, many thanks to our wonderful volunteers who keep the library, publications (Forum Insider and The Bulletin), and extraction projects running smoothly for our use.

-Lyleth Winther- 503-659-8018 lylaw1@verizon.net

NEWS YOU CAN USE IN 2010

ANCESTRY.COM ANNOUNCES COMING ATTRACTIONS IN 2010

Popular U.S. collections in the works:

- Birth, marriage and death records, especially from 1861–1914
- Funeral home and cemetery records, 1800s–1900s
- State and territory census records
- Land ownership maps, 1860–1920
- Historical newspapers, especially from 1861–1914
- Civil War Records, including Union draft registers and Confederate pension records

Popular international collections in the works:

- Scottish city directories, 1800s–1900s
- London electoral registers, 1900s
- German regimental histories, 1800s–1900s
- Canadian city and area directories, 1800s–1900s

In addition, according to Ancestry's January 3, 2010 Newsletter, we will see the 1950 U.S. Census Substitute, which includes information from 2,500 city directories and 49 states; passenger lists 1899-1957 for boats docking in Boston, New Orleans and Honolulu and Naturalization Records from 1795-1972, which can include many details, such as birth dates and immigration stories.

Oregon researchers will find World War II records for "The Old Man's Draft" including men born from 1877-1897 living in Oregon, Idaho and Washington, who were called to serve.

More than 700 million U.S. Public Records will be added, based on voter lists from the 1930s to the 1980s, which will include name, address, dates of birth or ages.

LIBRARY COLLECTION NEWS

Last time, we explored Dewey Numbers 900 through 929. The only material in this area not yet visited are the family history books along the north and east walls.

All of the family history books have a 929.2 number. The second number on the label is a code (much like a Soundex code) for the primary name in the book's title. This system results in all the family history books being in alphabetical order, not by authors name (nor necessarily by title), but by the subject family name. It's so easy to walk right to the spot where your family name may be! Keep in mind that most volumes also give information on related lines, and these names are often listed in the book's subtitle. Those subtitled names will be in the catalog, so be sure to also check the GFO catalog for your family names.

Our family history books come from a variety of sources, including those written and donated to the GFO Library by members. Those member-authored items will be identified by a special book plate inside the front cover. If you know of any member-author items in our collection that do not have this bookplate, please let us know.

Sandi Whiteman
Library Director



INTEREST GROUPS' MASTER CONTACT LIST

British Interest Group—British Interest Group—Lyleth Winther lylaw1@verizon.net 4th Saturday (Sept, Jan, Mar, May) .

Computer Interest Group—Marty Krauter mkrauter@pacifier.com Third Monday -7 p.m.

DNA—Emily Aulicino aulicino@hevanet.com 2nd Tues of odd months (Jan, Mar, May, Jul, Sept, Nov) 1-2:30p.m..

Illinois Group—Kristy Gravlin hannah@teleport.com and Harlene Patterson Harlene5@yahoo.com 2nd Sat 9:30a.m.

Irish Group—Tom O'Brien tom.obrien4@comcast.net 3rd Sat 1 p.m.(Jan, Mar, May, Jul, Sept, Nov) Group meets in GFO's Higgins Room, but sometimes at Family History Center—105th Ave & Ne Thompson

Round Table Discussion Group—Julie Kidd rathernut@cs.com 4th Mondays at 6:30 p.m.

TMG SIG —Julie Kidd rathernut@cs.com 4th Wed at 7:00 p.m.

TMG SUG—Roger Ostrom rostrom@spiritone.com 3rd Sat (Jan, Mar, May, Jul, Sept, Nov) at 9:30 a.m.

Writers' Forum Group—Peggy Baldwin peggy.baldwin@family-passages.com 2nd Sat every month, but. no meetings in June, July & August.

Heritage Scrapbooking Group: Bonnie LaDoe—bladoe@aol.com. Meets every 1st Sunday of the month at 1 p.m.

**GFO's ANNUAL APPEAL
WE ARE OVER HALFWAY TO OUR GOAL**

**Our goal is \$15,000, and we have received \$8,000. Help us go all the way to a successful finish.
It's not too late! Send your donation in February and March.**

The names of all donors, who agreed to be listed, will be published in the April Insider along with the Appeal's progress toward our goal.

The Forum Insider (ISSN 1051-5666) is the newsletter of the Genealogical Forum of Oregon Inc., PO Box 42567, Portland OR 97242-0567. The Forum is a membership organization devoted to genealogical research, preservation, and education. The GFO publications promote the field of genealogy for the professional and the hobbyist. Dues are \$40 per year for individual memberships and \$55 for joint memberships. Membership includes subscriptions to *The Bulletin* (March, June, September, and December) and *The Forum Insider* (January, February, April, May, July, August, October & November). Material from *The Forum Insider* may be reproduced provided credit is given to the publication, the author of the article, and the Genealogical Forum of Oregon. *The Forum Insider* staff includes Janis Bailey, Editor; Loretta Welsh, Publisher; Jim Morrow and Bruce Conrad Assistants to Loretta; Shirley Durkheimer, Assembling; Bob & Marianne Schug, Mailing Labels; Ray Ashmun, Post Office delivery. Many thanks to everyone including our proofreader, David Hupp.

MOVING AHEAD

Don Holznagel

The next meeting to discuss the currently available information on planning for the move of GFO to new facilities will be conducted Saturday, Feb. 13, following the regular monthly membership meeting and program. The session will begin at about 3:00 p.m. after completion of the regular education program, and will run about a half-hour or as long as there are questions and ideas to discuss. Any member is welcome, and members are encouraged to attend the regular education program first, then stay on for these discussions. Another opportunity for a similar session will be May 8th..

FROM THE DAUGHTERS OF THE AMERICAN REVOLUTION WEBSITE

Submitted by Cathy Lauer

“The DAR is excited to announce that the Genealogical Research System (GRS), a combination of several extensive genealogical databases, is now available online! Please use this free resource to look up your Patriot. Because this information is available, the Patriot Index Lookup Service is now closed.”

This database previously available only to DAR members will be an excellent resource for anyone looking to find their ancestors. Be aware that this database is not a complete list of all patriots. It is the proven lineage of Society members. Check out their website, <http://www.dar.org> and click on FEATURES: DAR Patriot Lookup.

-Submitted by Cathy Lauer-



**MARK YOUR CALENDARS FOR
THE NEXT GFO ALL-NIGHTER**
Saturday February 20th 6 p.m. to 6 a.m.

Sunday; Cost \$15
COME JOIN THE FUN!

Snacks provided
Pizza at Midnight
Questions?

Email Julie at rathenut@cs.com
or check with GFO
503-963-1932

**HELP FOR BRICK WALLS
ASK CONNIE LENZEN**

4TH SUNDAY, FEBRUARY thru JUNE 2010

**1/2 -hour sessions between 1:00 p.m.
and 3 p.m.**

**Cost for GFO members is \$25 each 1/2
hour session. Cost for non-members is
\$50. Checks made out to GFO must be
given to receptionist prior to session.
Call GFO 503-963-1932 for preferred
time. First come. First served.
www.gfo.org**

MONTHLY PROGRAMS FOR 2010

13 February 2010, “Vital Records & Black History “by April Ober and Eileen Chamberlin , as well as;
Tri-Met Relocation Membership-Input Session

13 March 2010, “Spring Break, Plan For Your Summer Vacation, Doing Onsite Research” by Duane Funk,
Marty Krauter, and Connie Lenzen

10 April 2010, “Special Writing Program”, details to follow.

8 May 2010, “Military Records” by Vicki Bonagofski and Duane Funk and
Relocation Membership-Input Session

12 June 2010, “Reunions” by April Ober and Leslie Lawson

Connie's Corner

RESEARCH PENNSYLVANIA FROM PORTLAND

By Connie Lenzen

Many Oregonians have ancestors who lived in Pennsylvania. While we would all like to go onsite to do our research, that's usually not possible. Fortunately, the GFO Library has some good Pennsylvania resources – in book form, in microfilm, and on CD. The GFO Library also has Internet computers that allow us to access other sources.

One of the most important sources for Pennsylvania research is the 138-volume set of *The Published Archives of Pennsylvania*. These books, printed in nine series between 1838 and 1935, make it possible for people to research their colonial Pennsylvania ancestor without actually going to Pennsylvania. Most of the books are in the GFO Library and the Multnomah County Library. They are also online in the “free” section of Footnote.com. As much as I like to use digitized records, this is one of those places where a book is better since the indexes seem to be incomplete. If you use the Footnote.com version, plan on scrolling through the pages to find your ancestor.

What you will find in the various series:

The First Series consists of twelve volumes of Colonial Records that were published. This series is on Footnote.com.

The Second Series consists of nineteen volumes that include marriage records, muster rolls, lists of foreign arrivals (by date and name of ship), and the lists of foreigners who took the oath of allegiance at the time of their disembarkation. Most of the volumes have their own index. This series is on Footnote.com.

The Third Series consists of thirty volumes. I think it is the most useful for the genealogist because the books contain land records, tax lists, and some militia lists. The last three volumes are the index to the Series. The GFO Library has this set.

The Fourth Series consists of twelve volumes of papers of the Pennsylvania governors. This series is on Footnote.com.

The Fifth Series consists of eight volumes and is at the Multnomah County Library. It contains military record books such as military muster rolls for the Revolutionary War and the statehood period up to 1800. The index is found in volumes 15a and 15b of the Sixth Series.

The Sixth Series consists of fourteen volumes and is at the Multnomah County Library. It continues the list of muster rolls through the post-Revolution period and the War of 1812. One volume names Pennsylvania soldiers who fought in the Mexican War of 1846–1848.

The Seventh Series consists of a five-volume index to the Sixth Series. This series is on Footnote.com.

The Eighth Series consists of eight volumes of the proceedings of the House of Representatives. This series is on Footnote.com.

The Ninth Series consists of ten volumes of the actions of the governors. This series is on Footnote.com.

To find the books on Footnote.com, type in the URL: www.footnote.com, click on the "Original Documents" tab and then scroll down to “Pennsylvania Archives”. Use the “Search” option to see if your ancestor is indexed. If not, use the “Browse” option to scroll through the books.

MEMBERS' Favorite Websites:

www.gfo.org
www.archives.gov/aad/
www.usgenweb.com
www.rootsweb.com
www.cyndislist.com
www.familysearch.org
www.ancestry.com
www.nara.gov
www.sos.mo.gov/archives/
www.multcolib.org
www.ohs.org
www.ccg-wa.org
 (Clark Co Gen Soc)
www.sos.state.il.us/departments/archives/archives.html
www.genealogy.az.gov/index.htm
www.DAR.org
www.theshipslist.com
<http://abish.byui.edu/specialCollections/westernstates/search.cfm>
 (Western States Marriages to 1928)
www.kshs.org (Kansas)
www.ellisland.org
[heritagequestonline](http://heritagequestonline.com)
 (through multcolib.org)
www.findagrave.com
www.footnote.com \$ (free for 1st week)
www.genuki.org.uk
www.genealogy.com \$
www.GenealogyToday.com
www.interment.net (cemetery inscriptions)
www.ObitCentral.com
www.rootstelevision.com
www.progenealogists.com
www.genqueries.com

\$ = Fee Sites



Genealogical Forum of Oregon 2011 Writing Contest

“Movin’ On”

Why enter?

You may never get around to writing down your family stories!

The GFO Writing Contest encourages you to:

- Write an engaging story that future generations will enjoy, and
- Base your story on good, sound research

Requirements

- Piece must be written to the theme: “Movin’ On” — tell the story of your ancestor, migrating from one place to another.
- Your story must be factual, with suppositions clearly indicated.
- Documentation in the form of endnotes or footnotes is **required**.
- **Length** — 750 to 5000 words
- Story must be submitted in electronic form — Word or RTF file, submitted as an email attachment or burned to a CD or floppy disk.
- Submitted from November 1, 2010 to February 1, 2011. **Please do not submit before November 1st.**
- * Plan ahead and make a concerted effort to attend the award presentation at the GFO Monthly meeting on Saturday, April 9, 2011.

Judging Criteria

- * A factual story built around the theme
- * A story that engages the reader
- * Good use of language, including smoothness of the writing
- * Convincing research – genealogical and background • Well documented — all
- * facts are supported by evidence

Need Help?

- Attend GFO’s Writers’ Forum or other writing group, for feedback on your writing; or form your own group.
- Read Sharon Carmack’s *You Can Write Your Family History* (Cincinnati, Ohio: Betterway Books, 2003).
- For citing sources: Elizabeth Shown Mills, *Evidence: Analysis for the Family Historian* (Baltimore, Maryland: Genealogical Publishing Company, 1997) and Elizabeth Shown Mills, *Evidence Explained* (Baltimore, Maryland: Genealogical Publishing Company, 2007).

Entry Form

Name _____

Address _____

City _____ State _____ Zip _____

Phone _____ Email _____

Title of your story _____

GFO Member?

Yes Membership No. _____

**No. Please enclose check for \$10 made out to Genealogical Forum of Oregon
Or, GFO**

Instructions

By e-mail: Give the information requested in the form above and submit your story as an e-mail attachment to peggy.baldwin@family-passages.com and if you are a non-member mail your \$10 check to Peggy Baldwin, GFO Writing Contest, at the address given below.

OR

By mail: Submit this form, along with your story in Microsoft Word or RTF (rich text file) format on a floppy disk or burned to a CD. Remember to enclose a check for \$10 if you are not a member of GFO. Send to the following address :

**Peggy Baldwin
GFO Writing Contest—2010
Genealogical Forum of Oregon
P O Box 42567
Portland, Oregon 97242**

Writing Contest Awards

- Winners will be announced at the GFO's Monthly Meeting on April 9, 2011. Please plan to attend.
- Winning articles will be published in the GFO's **The Bulletin** and on the GFO Web site.
- Winners will receive gift certificates to Portland's Powell's Bookstore (www.powells.com).

Questions?

E-mail Peggy Baldwin at peggy.baldwin@family-passages.com or visit the GFO web site at http://www.gfo.org/writing_contest.htm

NEW LIBRARY BOOKS

- Partlow, Thomas E. *Smith County, Tennessee Chancery Court Records 1824-1871*. Southern Historical Press: Greenville, South Carolina, 2001. 976.8 S643 Court
- Tudor, H. Thomas. *Early Settlers of Fort Boonesborough*. Published by the author: Richmond, Virginia, 1975. 976.9 M182 Biography
- Hildreth, S. P. *Biographical and Historical Memoirs of the Early Pioneer Settlers of Ohio*. Heritage Books: Bowie, Maryland, 1991. 977.1 A000 Biography
- Brien, Lindsay M. *Our Forefathers: A Department Featuring Miami Valley Families, Volumes 1 - 2*. Ohio State Library: No Publisher, 1940. 977.1 A000 News Microfilm
- Beatty, Elizabeth Grover and Marjorie S. Stone. *Getting to Know Athens County*. Athens, Ohio, 1984. 971.1 A867 History
- Athens, Ohio City Directory 1957*. Mullin-Kille: Chillicothe, Ohio, 1957. 971.1 A867 City Directory
- Auglaize County, Ohio Cemetery Inscriptions, vol. 3, book. 1. St. Mary's Township, Elmgrove Cemetery*. Auglaize Chapter Ohio Genealogy Society: 1992. 971.1 A921 Cemetery
- Auglaize County, Ohio Cemetery Inscriptions, vol. 3 book. 2: St. Mary's, Logan, Noble and Salem Townships*. Auglaize Chapter, Ohio Genealogy Society: 1992. 971.1 A921 Cemetery
- Chapman, Mary. *Auglaize County, Ohio Abstracts of Obits and Death Mentions from the "Auglaize County Democrat" 1869-1899, Book 1*. Auglaize Chapter, Ohio Genealogy Society: 1995. 971.1 A921
- Auglaize County, Ohio Abstracts of Obits and Death Mentions from the "Auglaize County Democrat" 1869-1899 M-Z*. Auglaize Chapter, Ohio Genealogy Society: 1995. 971.1 A921
- Polk's Columbus City Directory, 1957*. R. L. Polk & Co. 1957. 971.1 F832
- Ross County, Ohio Families, Volume 1*. Ross County Genealogy Society: Chillicothe, Ohio, 1976. 971.1 R823
- Ross County, Ohio Families, Volume 2*. Ross County Genealogy Society: Chillicothe, Ohio, 1979. 971.1 R823
- Ross County, Ohio Families, Volume 3*. Ross County Genealogy Society: Chillicothe, Ohio, 1982. 971.1 R823
- "Lest We Forget" Chicago's Awful Theater Horror, By the Survivors and Rescuers*. Memorial Publishing Company: No date. 977.3 C771 History
- Buecher, Robert. *St. Clair County, Illinois Birth and Death Records 1856 - 1870*. Published by the author: 1981. 977.3 S1362 Vital Records
- St. Clair County, Illinois Birth and Death Records 1843 - 1856*. Published by the author: 1979. 977.3 S1362 Vital Records
- Here and There in Grant County. Grant County, Historical Society*: No date. 977.5 G761 Periodical
- Memories of Bygone Years: Official Handbook of Western Minnesota Steam Threshers Reunion, Inc.* No publisher: No date. 977.6 A000
- Polk County, Iowa Marriages 1867-1871*. Treeshakers of Valley Junction: West Des Moines, Iowa, 1976. 977.7 P769 Vital Records, Marriage
- Marriages: Polk County, Iowa 1849-1851*. No publisher: No date. 977.7 P769 Vital Records, Marriage
- Elliston Centennial 1881-1981*. Mount Airy Record-News: Mount Airy: Iowa, 1981. 977.7 R581 History
- Sprague, Stuart Seely. *Kentuckians in Missouri*. Genealogical Publishing Company: Baltimore, Maryland, 977.8 A000 Migration
- Ellsberry, Elizabeth Prather. *Cemetery Records of Ray County, Missouri, Volume 5*. Published by the author: Chillicothe, Missouri, No date. 977.8 R263 Cemetery
- Cemetery Records of Ray County, Missouri, Volume 6*. Published by the author: Chillicothe, Missouri, No date. 977.7 R263 Cemetery

GFO Mini Classes Winter 2010

GFO min classes are held in the GFO Higgins Room. Registration is \$15.00 per class, and class size is limited to 30, unless otherwise stated.

#1 – Feb 6, Saturday...Choosing a Genealogy Program – By Marty Krauter - 10:00 a.m. to 12:00 p.m. We will review the top genealogy programs to record your family tree information. It will focus on program features and compare software titles. This course will help you choose the right software for your needs.

#2 – Feb 20, Saturday...Dating Old Photographs Workshop – By Karen Wallace Steely - 10:00 a.m. to 12:00 p.m.

#3 – Feb 20, Saturday... Vital Records on the Web – By Connie Lenzen - 1:00 p.m. to 3:00 p.m. Vital records contains more direct evidence than any other source. Come to this class to learn how you can find them with your computer and what to do with them after you find them.

#4 – Feb 21, Sunday...Scan With Sam, by Sam Butler - 1:00 p.m. to 3:00 p.m.

How to fix spots, tears and damage to original old photographs. Learn how to clone, save as, and the best ways to get digital images to other people. Some tricks and some suggestions.

#5 – Feb 27, Saturday...Beginning Genealogy, by Carole Gibson – 10:00 a.m. to 12:00 p.m.

ARE YOU UNSURE OF WHERE TO BEGIN THE PROCESS OR DO YOU JUST WANT TO GET RE-STARTED? DO YOU NEED SOME GUIDANCE WHERE TO GO NEXT? WE CAN HELP YOU JUMP-START YOUR GENEALOGY!

#6 – March 6, Saturday...Y-DNA for the Non-Technical, by Judy Kellar Fox - 1:00 p.m. to 3:00 p.m.

Y-DNA (MALE-LINE) TESTING TO SUPPLEMENT AND CONFIRM TRADITIONAL GENEALOGICAL RESEARCH. THIS NON-TECHNICAL CLASS WILL DISCUSS HOW TO GET TESTED AND WHAT TO DO ONCE THE TEST NUMBERS COME BACK.

#7 - March 14, Sunday...Doing Onsite Research, by Leslie Lawson - 1:00 p.m. to 3:00 p.m.

Have you dreamed of going “there” and doing some on-site research? Many of us have had that dream, and then worked to make it come true! You can as well. There are several things you can do while still at home to make this a positive experience. Preparation is *everything!*

#8 – APRIL 11, SUNDAY...CANADIAN RESEARCH, BY MICHELE FRICKE - 1:00 P.M. TO 3:00 P.M.

CANADIAN RESEARCH , REVIEW THE OPPORTUNITIES AVAILABLE IN THE MAIN REPOSITORIES OF CANADA WITH TIPS FOR FINDING RESOURCES, ONLINE AND ON SITE, WITHIN YOUR PROVINCE OF INTEREST.

#9 – April 17, Saturday...Writing Your Family Narrative in Word, by Connie Lenzen – 1:00 p.m. to 3:00 p.m.

GENEALOGISTS PULL TOGETHER THEIR DATA AND EVIDENCE EVALUATION AND CREATE A WRITTEN DOCUMENT, BUT HOW SHOULD THEY DO IT, AND WHAT TYPE OF DOCUMENT SHOULD THEY BE ASSEMBLING? HOW DO THEY MAKE IT INTERESTING? THIS SESSION IS AN INTRODUCTION TO THE VARIOUS KINDS OF COMPILATIONS AND THE STEPS TO WRITING THEM.

#10 - APRIL 18, SUNDAY... SPECIAL SCHEDULES, BY CONNIE LENZEN - 1:00 P.M. TO 3:00 P.M.

In 1850, 1860, 1870, and 1880, the census enumerator asked dozens of personal questions. The answers to most of them do not appear on the population schedules that we find on Internet databases. Come to this class to learn about agricultural and industrial schedules, and about the “delinquent and defective” classes. of people

#11 – May 22, Saturday...Military Records, by Gerald Lenzen - 10:00 a.m. to 12:00 p.m.

MILITARY SERVICE AND PENSION RECORDS FOR CONFLICTS FROM EARLY COLONIAL TIMES UP TO WWII WILL BE PRESENTED FOR RESOURCES AVAILABLE IN THE GFO LIBRARY AND IN SOME ON-LINE LOCALITIES AVAILABLE FROM THE GFO LIBRARY. THIS IS NOT AN ON-LINE COURSE.

#12 – June 19, Saturday...Family Reunions, by Leslie Lawson & April Ober - 10:00 a.m. to 12:00 p.m.

Anyone can put together a reunion. Software and Internet sites to help with this task. We will discuss how to start this project, track it with time lines and what to offer to those who come to the reunion. The class will include survey samples to guide you.

#13 – June 26, Saturday...Beginning Genealogy, by Carole Gibson – 10:00 a.m. to 12:00 p.m.

ARE YOU UNSURE OF WHERE TO BEGIN THE PROCESS OR DO YOU JUST WANT TO GET RESTARTED? DO YOU NEED SOME GUIDANCE WHERE TO GO NEXT? WE CAN HELP YOU JUMPSTART YOUR GENEALOGY!

Download Registration Form from gfo.org, or mail check (to GFO) including class numbers.

The Forum Insider

Genealogical Forum of Oregon Inc.
 1505 SE Gideon Street
 PO Box 42567
 Portland OR 97242-0567

Address Service Requested

Non-Profit
 Organization
 US POSTAGE
 PAID
 Portland Oregon
 Permit No. 745



FEBRUARY

Place label here

FEBRUARY 2010	
1st	FREE Monday to non-members
6th	Saturday, 10-12 a.m. Mini-Class "Choosing A Genealogy Program"
7th	Sunday, 1:00 p.m. Heritage Scrapbooking
9th	Tuesday, 6:00 p.m. Board Meeting
13th	Saturday, 11:45 a.m. Writers' Forum 2:00 p.m. Monthly Program "Vital Records" April Ober & Eileen Chamberlin Plus Relocation Update
15th	Monday, 7:00 p.m. Computer Group
20th	Saturday; 10-12 a.m. Mini-Class "Dating Old Photos Workshop 1-3 p.m. "Vital Records on the Web" Mini-class All-Nighter, 6:00 p.m. until 6:30 a.m. Sunday:
21st	Sunday, 1-3 p.m. Mini-Class "Scan With Sam"
22nd	Monday, 7:00 p.m. Round Table Discussion
27th	Saturday, 10-12 p.m. "Beginning Genealogy" with Carole Gibson
28th	Sunday, 1 p.m. "Connie Lenzen's Bick Wall Help"

MARCH 2010	
1st	FREE Monday to non-members
6th	Saturday, 1-3 p.m. Mini-Class "Y DNA For the Non-Technical"
7th	Sunday, 1:00 p.m. Heritage Scrapbooking
9th	Tuesday, 1 p.m DNA Interest 6:00 p.m. Board Meeting
13th	Saturday, 9:30 a.m. Illinois Interest Group 11:45 a.m. Writers' Forum 2:00 p.m. Monthly Program "Spring Break, Plan for Your Summer Vacation's Onsite Research" with Duane Funk, Marty Krauter and Connie Lenzen
14th	Sunday, 1-3 p.m. Mini-Class "Doing On-Site Research"
15th	Monday, 7:00 p.m. Computer Interest Group
20th	Saturday, 9:30 a.m. TMG SUG 1:00 p.m. Irish Interest Group
22nd	Monday, 7:00 p.m. Round Table Discussion
24th	Wednesday, 6:20 p.m. TMG
27th	Saturday, 1:00 p.m. British
28th	Sunday, 1p.m. "Connie Lenzen's Brick Wall Help"

APRIL, 2010	
4th	EASTER SUNDAY LIBRARY CLOSED
5th	FREE MONDAY to non-members
10th	Saturday: 9:30 a.m. Illinois Group 11:45 a.m. Writers' Forum 2:00 p.m. Monthly Program: Special Writing Program-Details TBA
11th	Sunday : 1:00 p.m. Mini-Class "Canadian Research" with Michelle Fricke 3:00 p.m. Heritage Scrapbooking
13th	Tuesday: 6: 00 Board Meeting
17th	Saturday: 10 a.m. Beginning Gen. 1:00 p.m. Mini-Class; "Writing Your Family Narrative in WORD" with Connie Lenzen
18th	Sunday: 1:00 p.m. Mini-Class "Special Schedules with Connie Lenzen"
20th	Monday: 7 p.m. Computer IG
24th	Saturday: 8 a.m. Spring Seminar LIBRARY CLOSED
25th	Sunday: 1 p.m. Connie Lenzen's "Brick Wall Help"
26TH	Monday: 7 p.m. Round Table Discussion
28th	Wednesday: 6:30 p.m. TMG Forum